

Figure S1. Mouse body weight. Each mouse was fed a custom diets and body weight was calculated every 2 weeks. Data are presented as mean \pm SD ($n = 7$).

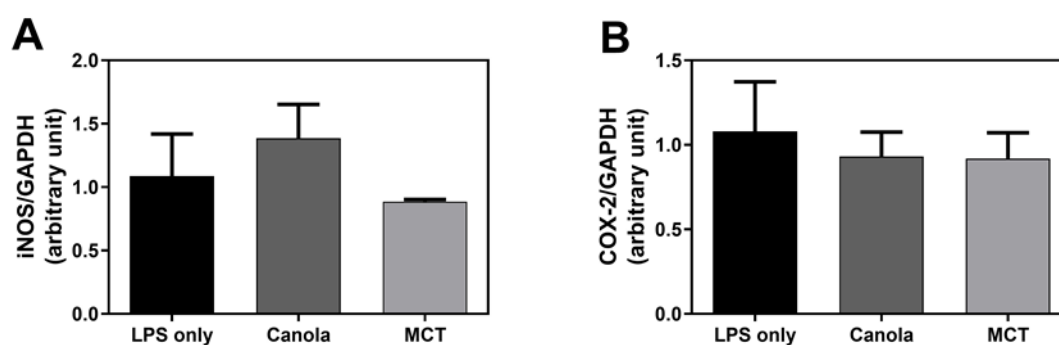


Figure S2. Effects of MCT on transcription of pro-inflammatory enzymes in RAW 264.7 macrophages. iNOS (A) and COX-2 (B) mRNA transcription following oil treatment and LPS stimulation. The relative levels of mRNA were determined by qRT-PCR and calculated relative to GAPDH by the $\Delta\Delta C_t$ method. Data are presented as mean \pm SEM ($n = 3$).