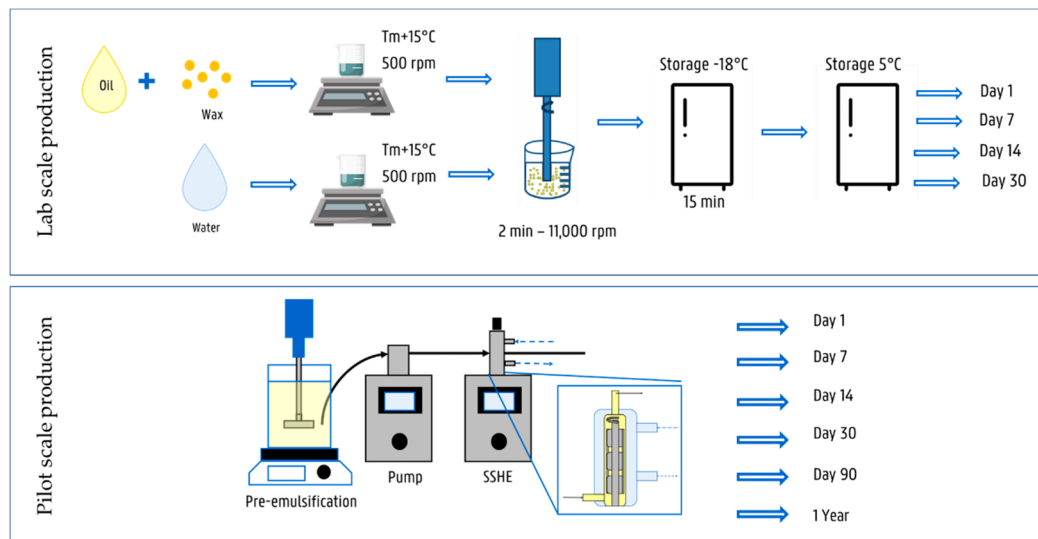


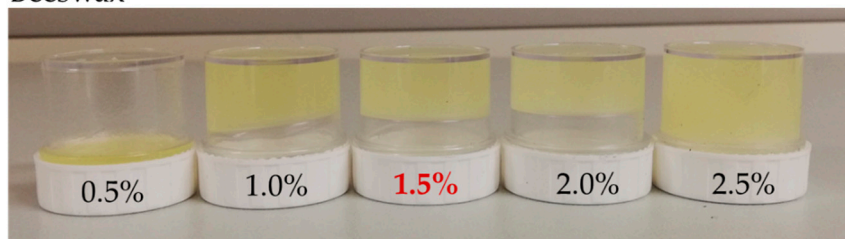
## Carnauba Wax and Beeswax as Structuring Agents for Water-in-Oleogel Emulsions without Added Emulsifiers



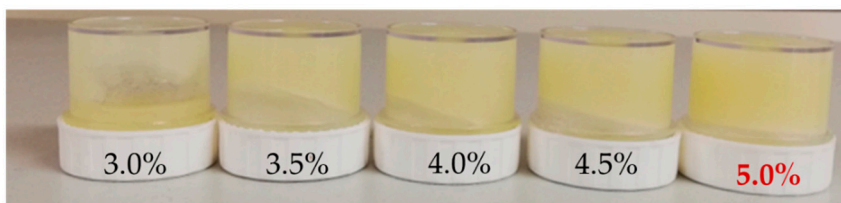
Abbreviations:  $T_m$  = Melting Temperature, SSHE = Scraped surface heat exchanger, rpm= revolutions per minute.

**Figure S1.** Diagram of Preparation techniques

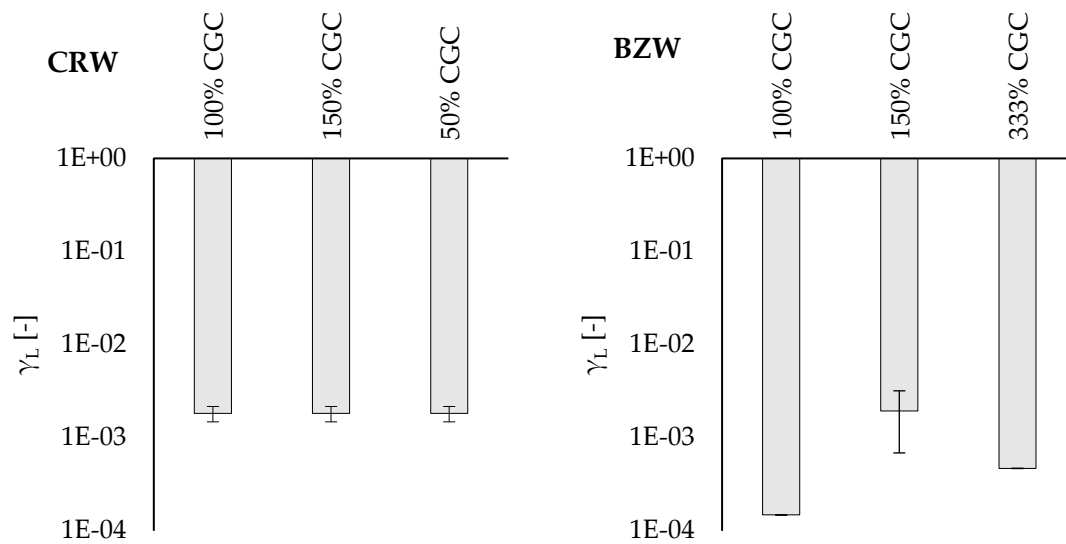
### Beeswax



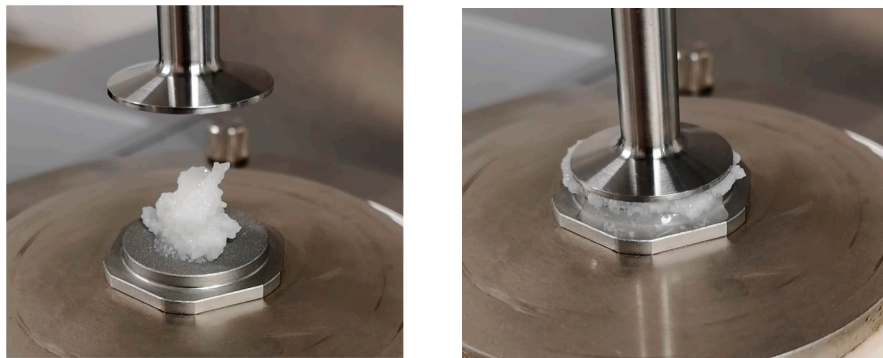
### Carnauba wax



**Figure S2.** Critical gelling concentration (CGC) experiments. The red text indicates the CGC of each wax.



**Figure S3.** Yield strain of CRW and BZW W/O emulsions prepared at 50% of the CGC, 100% of the CGC, 150% of the CGC and 333% of the CGC on a lab-scale (20% of water). Error bars represent one standard deviation. There are no significant differences between the three concentration levels ( $p > 0.05$ ).



**Figure S4.** Compression-induced coalescence while during sample preparation for rheological measurements.