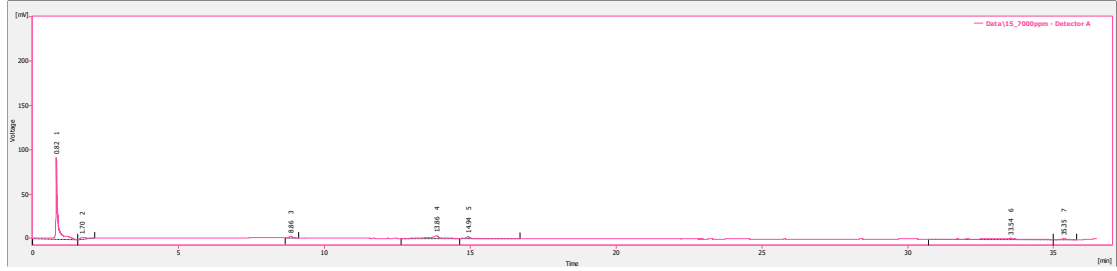
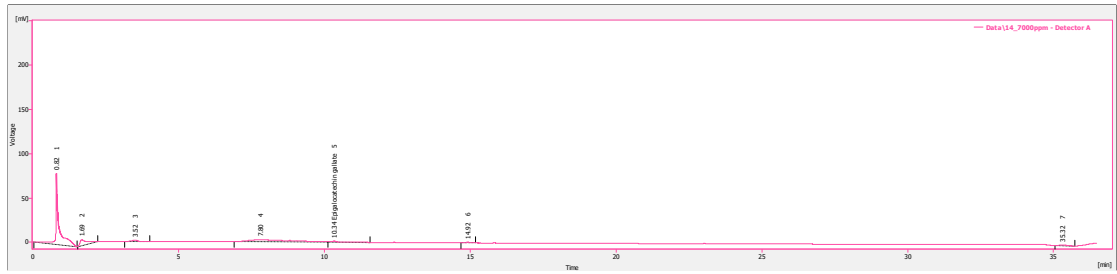


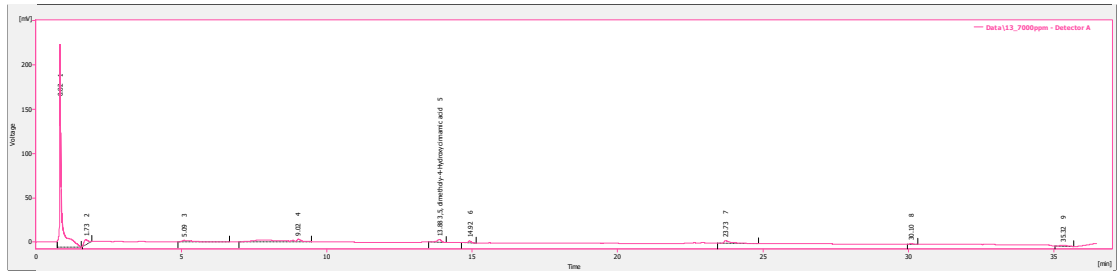
(16)



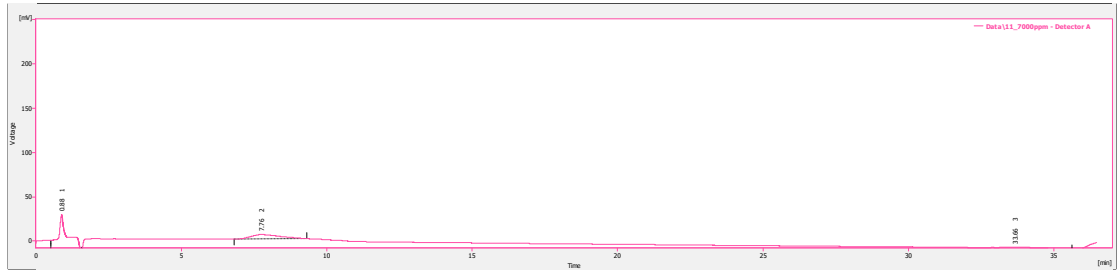
(15)



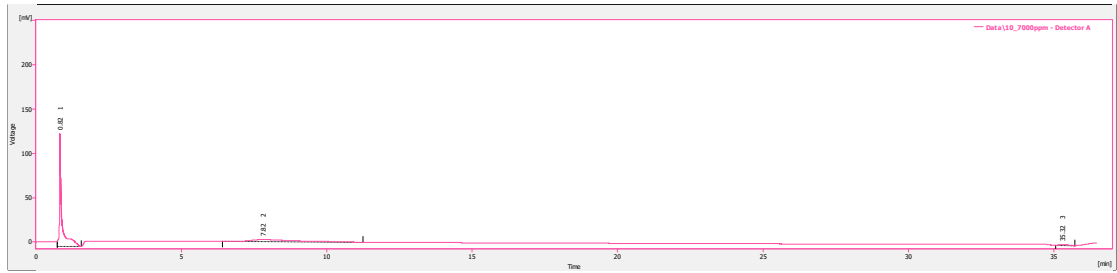
(14)



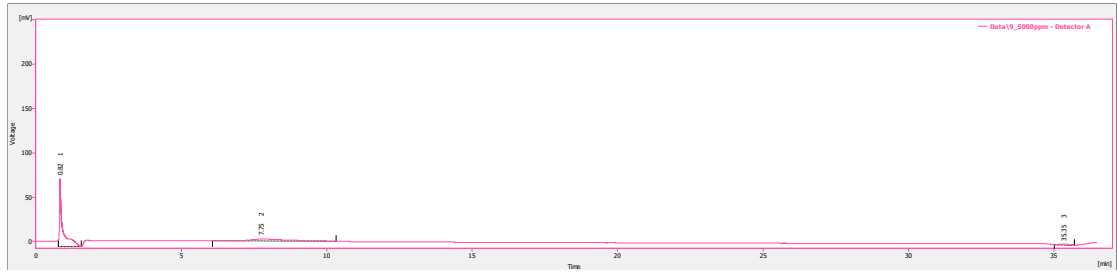
(13)



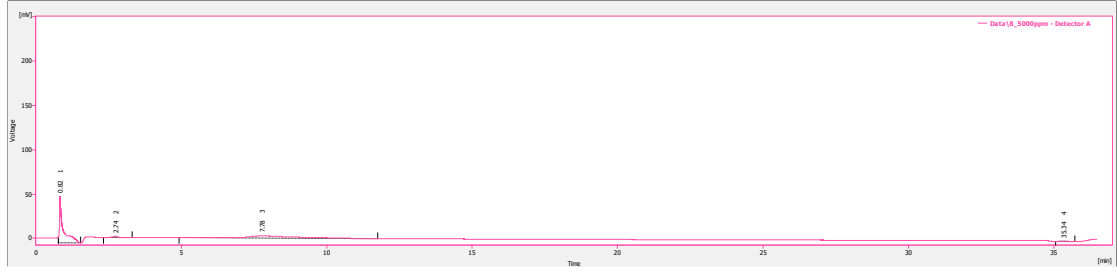
(11)



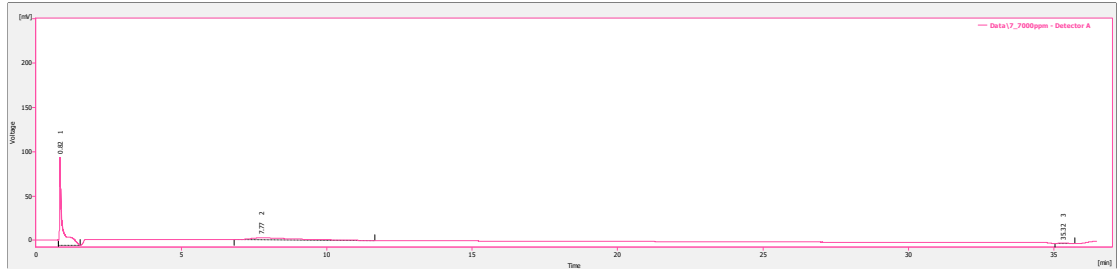
(10)



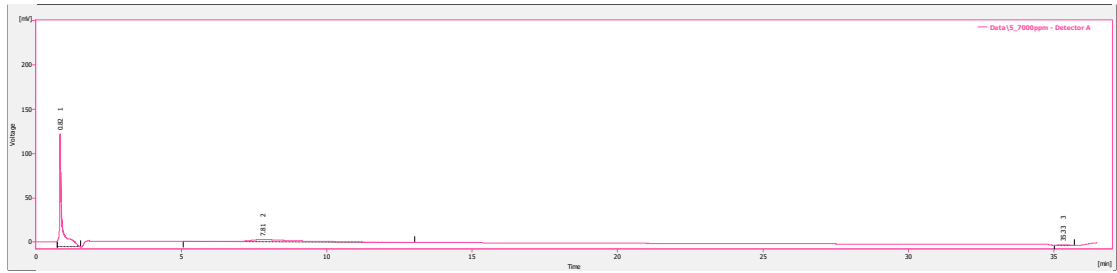
(9)



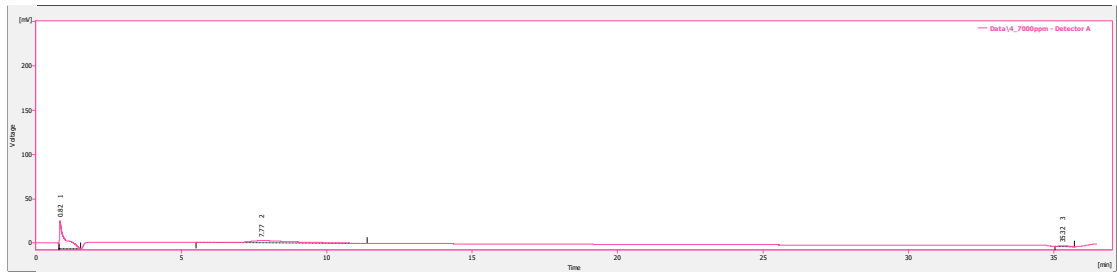
(8)



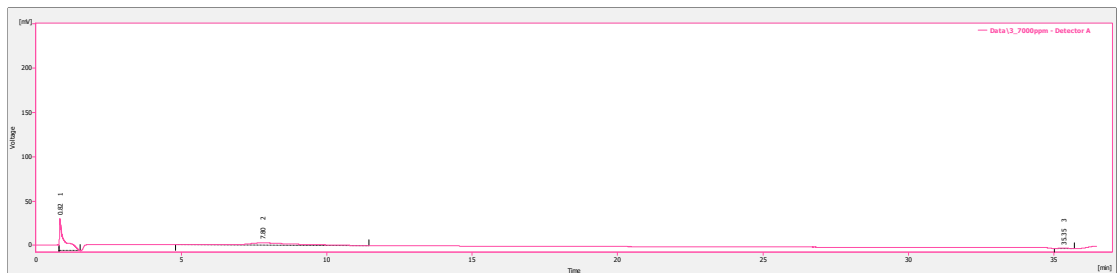
(7)



(5)



(4)



(3)



(2)



(1)

Figure S1. HPLC Chromatograms of macroalgae extracts at 280 nm. (1) *Ulva rigida*, (2) *Gracilaria gracilis*, (3) *Colpomenia sinuosa*, (4) *Codium fragile*, (5) *Cystoseira barbata*, (7) *Cystoseira amentacea*, (8) *Ulva intestinalis*, (9) *Cystoseira compressa*, (10) *Sargasum vulgare*, (11) *Padina pavonica*, (13) *Gigartina teedei*, (14) *Gracilaria* sp, (15) *Gigartina pistillata*, (16) *Gracilaria bursa pastoris*.