

Lipid Process Marker of Durum Wheat Debranning Fractions

Silvia Marzocchi ^{1,*}, Maria Cristina Messia ², Emanuele Marconi ³,
Maria Fiorenza Caboni ^{1,4}, Federica Pasini ^{1,4}

Figure S1. Chromatogram of the tocochromanols of I-WG sample. Peaks: (1) α -tocopherol; (2) α -tocotrienol; (3) β -tocopherol; (4) γ -tocopherol; (5) β -tocotrienol.

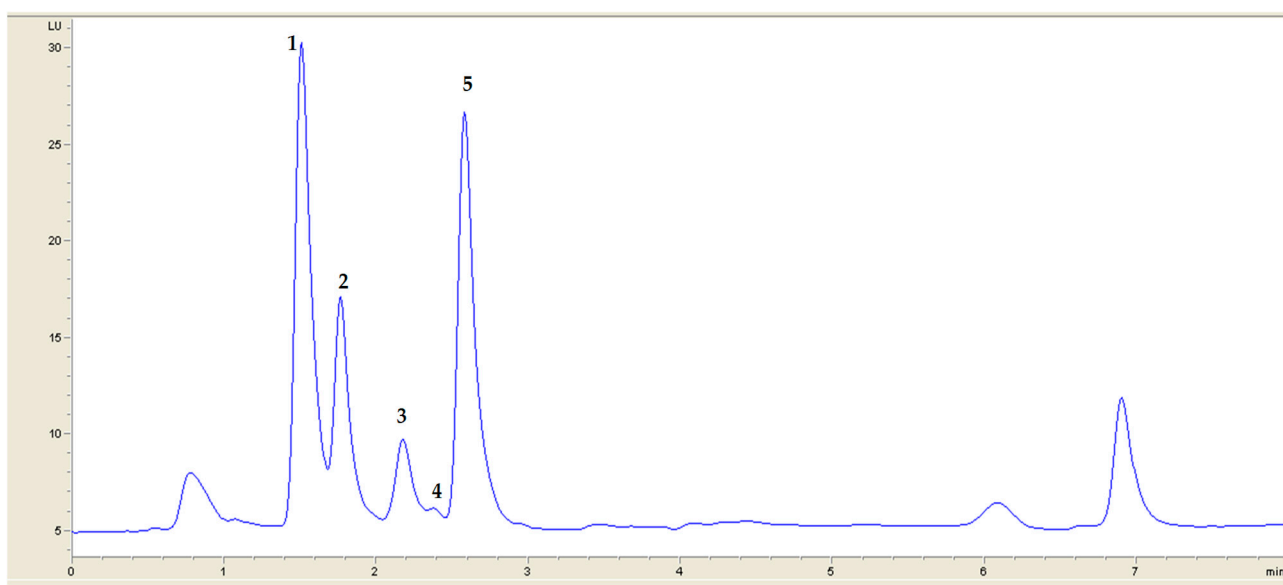


Figure S2. Chromatogram of the sterols of C-WG sample. Peaks: IS: 5α -cholestan- 3β -ol (Internal Standard); (1) Campesterol; (2) Campestanol; (3) Stigmasterol; (4) β -sitosterol; (5) Sitostanol; (6) Δ^5 -Avenasterol; (7) Avenastanol; (8) Δ^7 -avenasterol.

