

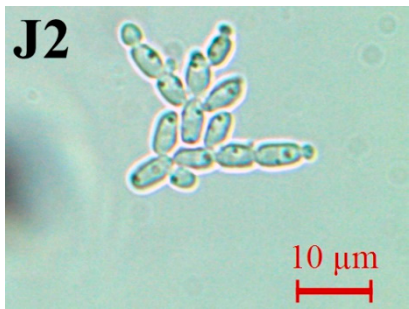
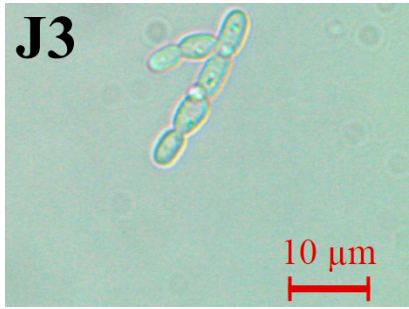
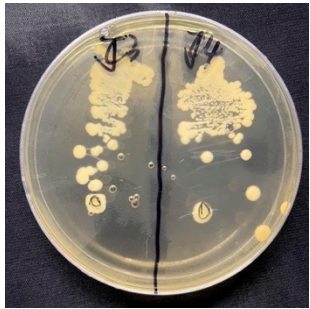
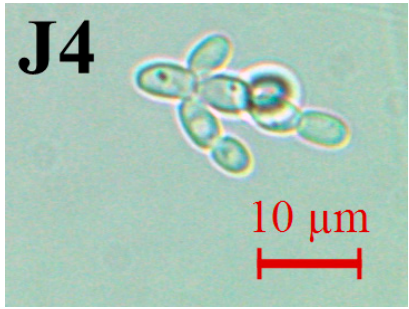
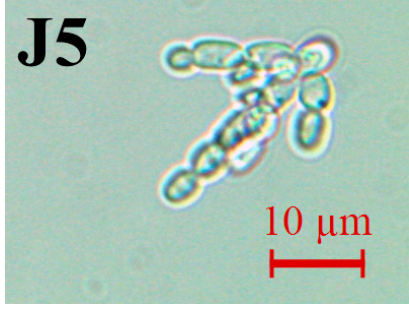

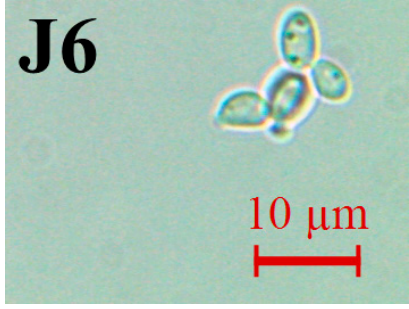
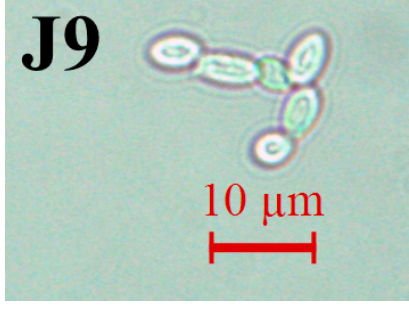
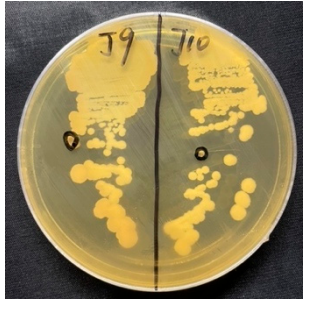
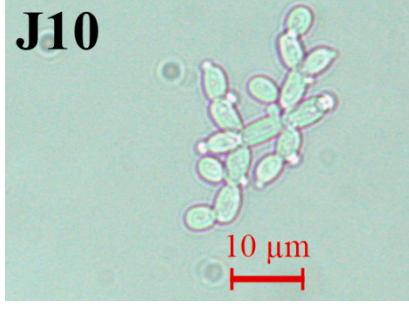
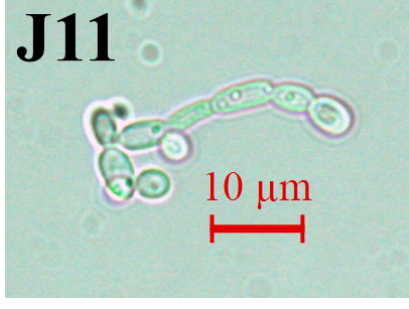
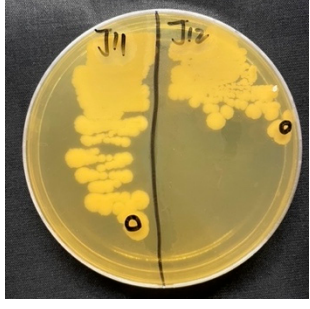
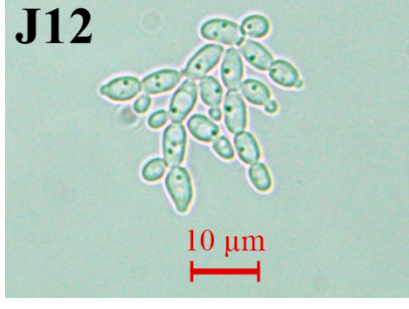
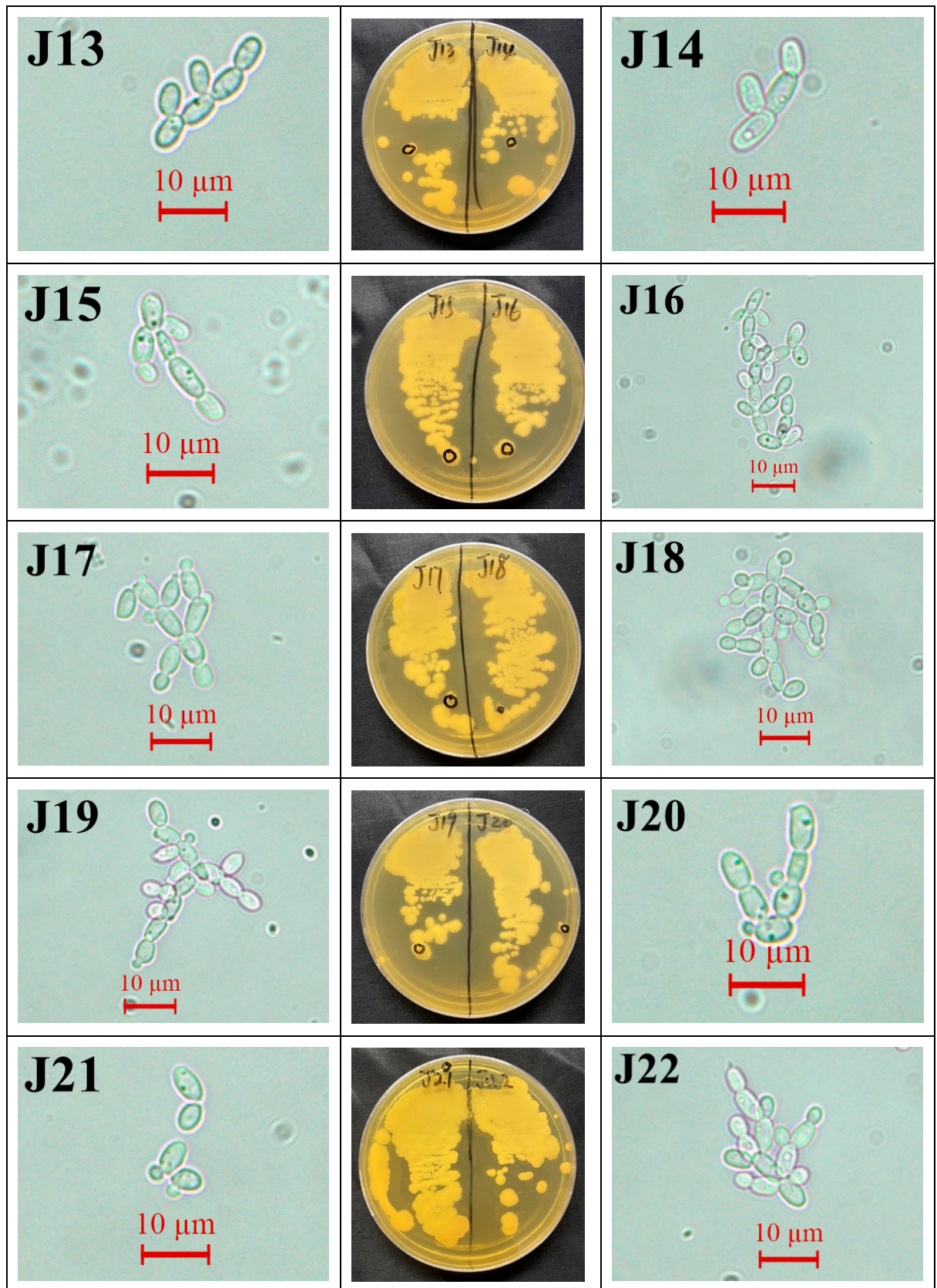
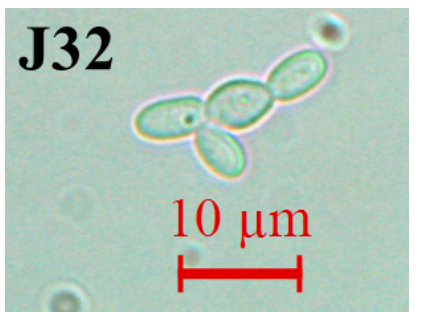
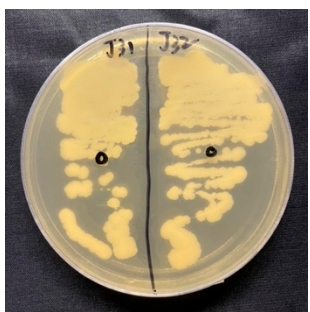
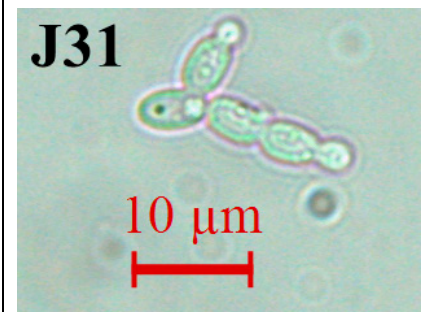
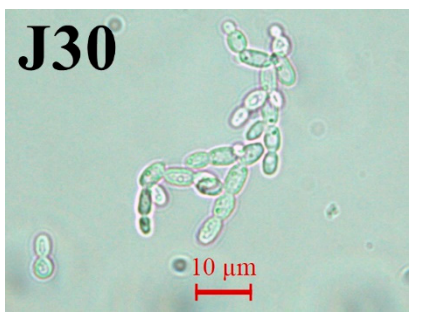
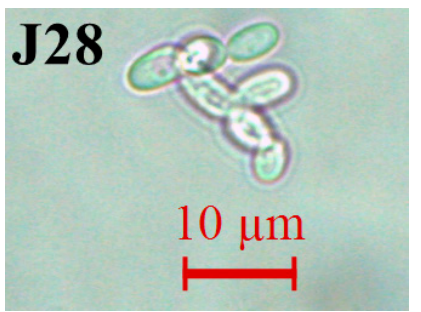
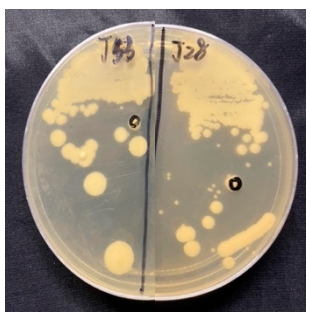
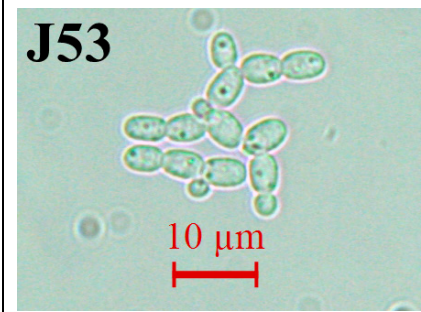
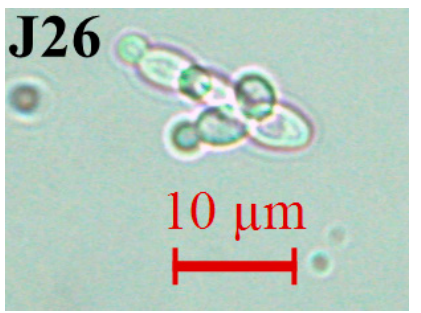
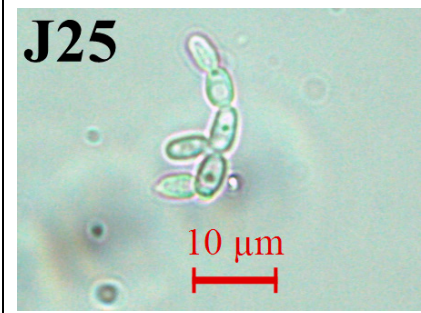
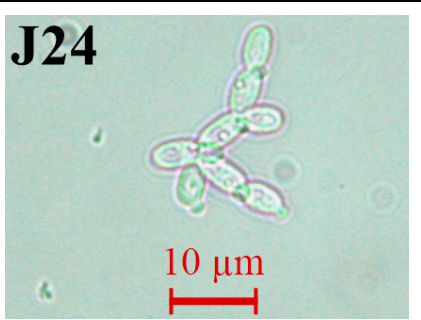
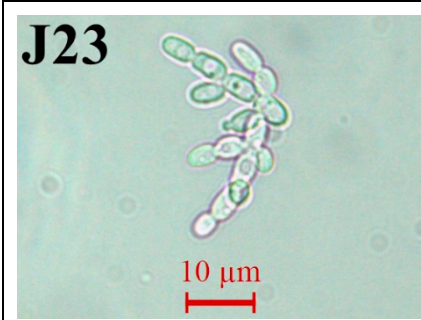
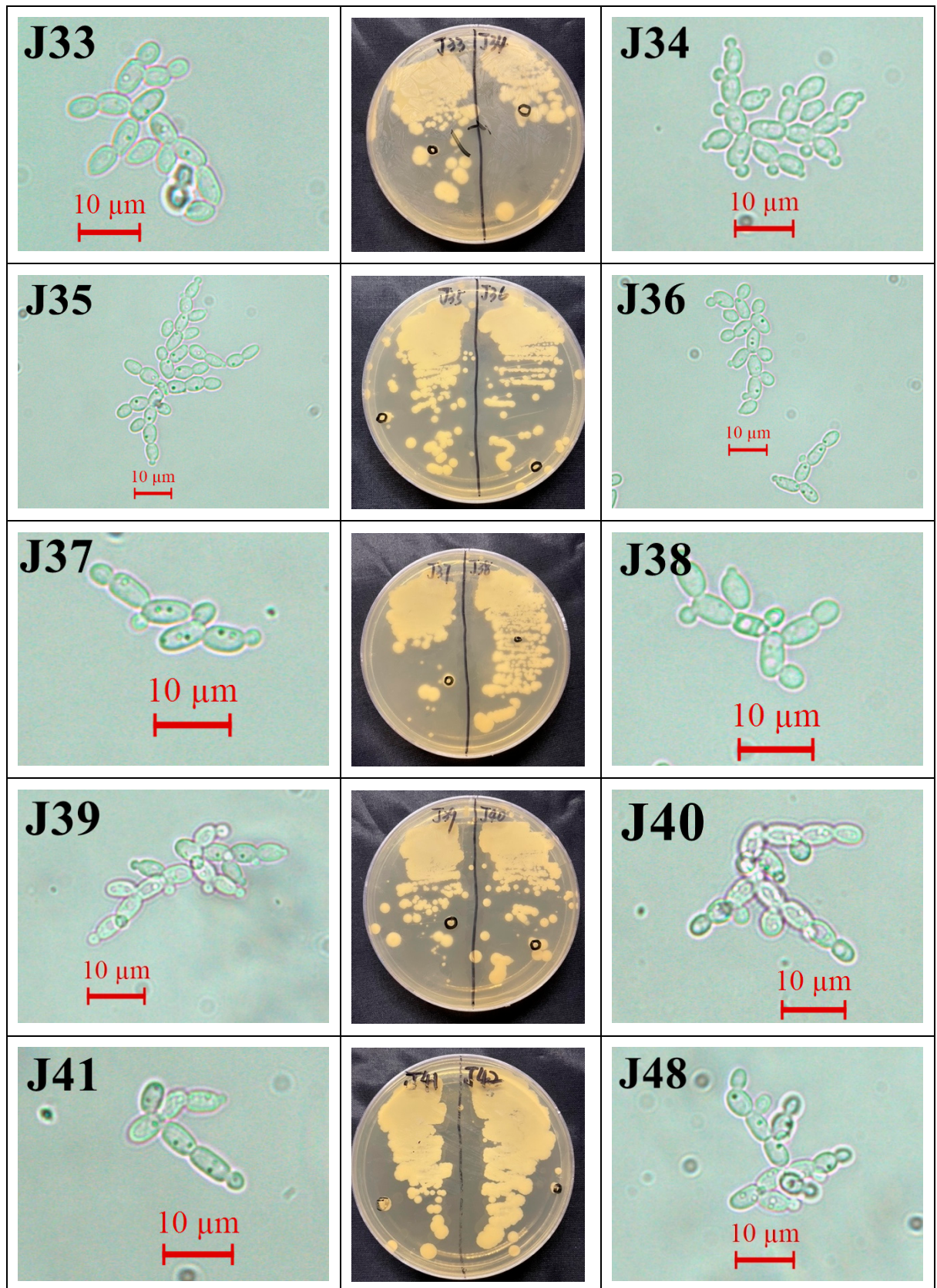


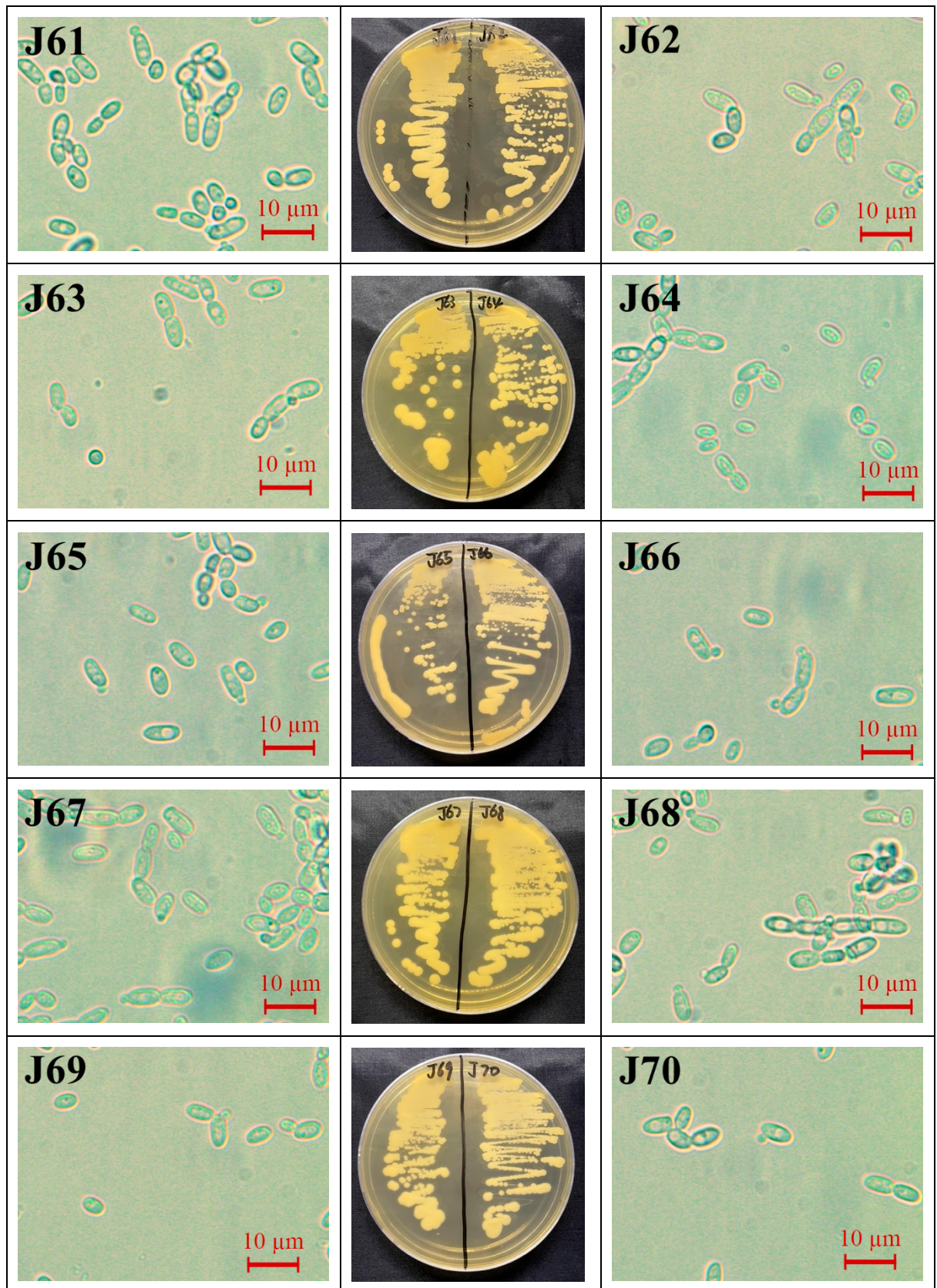
Figure S1 The strains can grow using EC as the sole carbon source.

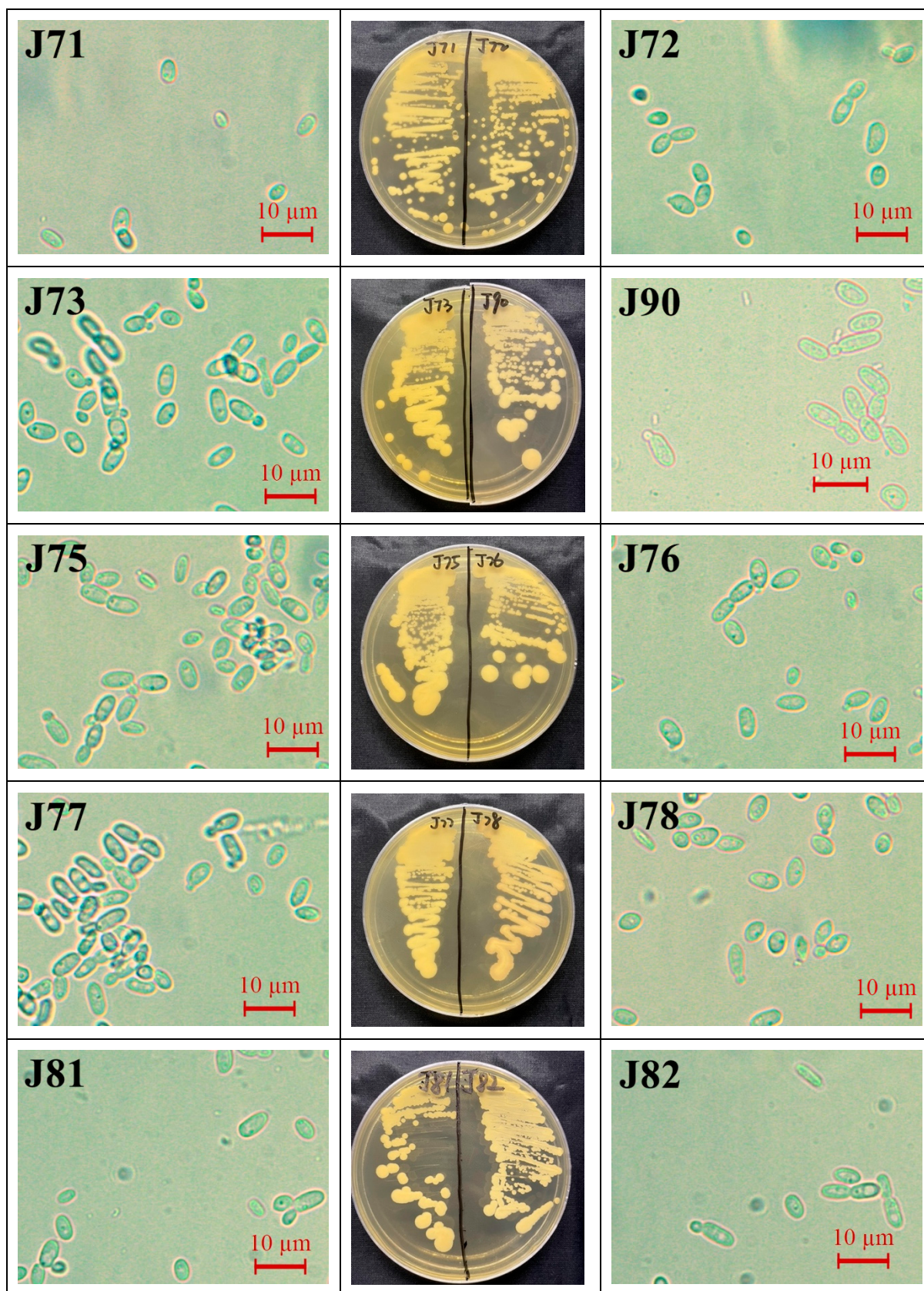
Microscopy	Colony morphology	Microscopy
J1 		J2 
J3 		J4 
J5 		J6 
J9 		J10 
J11 		J12 

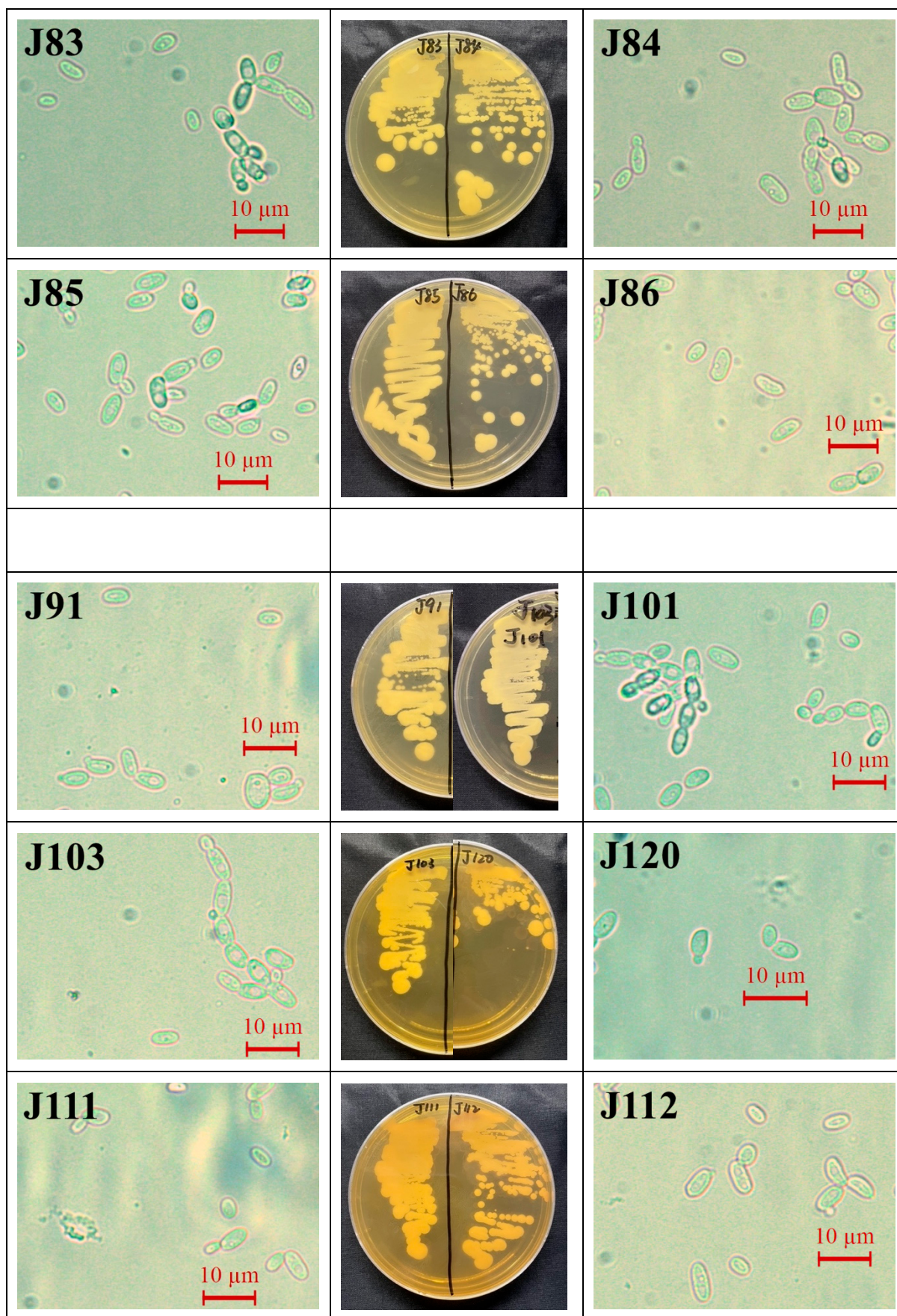












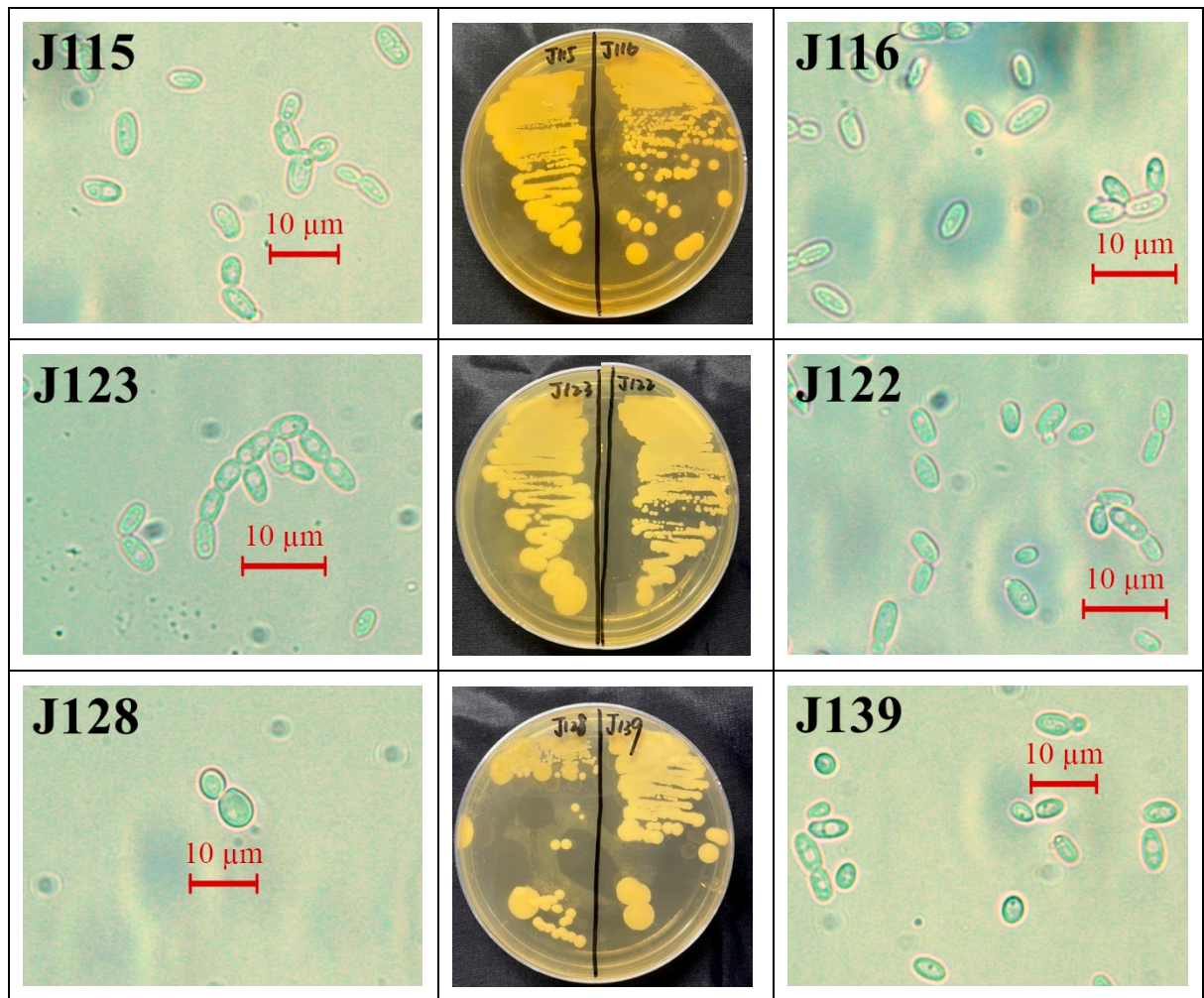


Figure S2 Results of colony morphological analysis and strain morphological analysis.

Table S1 The EC concentration of Chinese Baijiu after treated with immobilized J1, J1, immobilized J116, J116 and chitosan at 4 h, 8 h, 12 h and 24 h.

System	Time	Concentration of EC ($\mu\text{g/L}$)	Degradation Rate (%)
Baijiu	0	253.03 ± 9.89	/
	4	242.87 ± 1.14	4.01
Immobilized	8	203.90 ± 2.07	19.42
J1	12	173.10 ± 1.36	32.59
	24	146.07 ± 1.67	42.27
	4	218.64 ± 6.97	13.59
Immobilized	8	210.36 ± 5.12	14.56
J116	12	216.20 ± 9.27	16.86
	24	182.42 ± 5.05	27.91
J1	24	200.80 ± 4.17	20.64
J116	24	205.11 ± 2.29	18.93