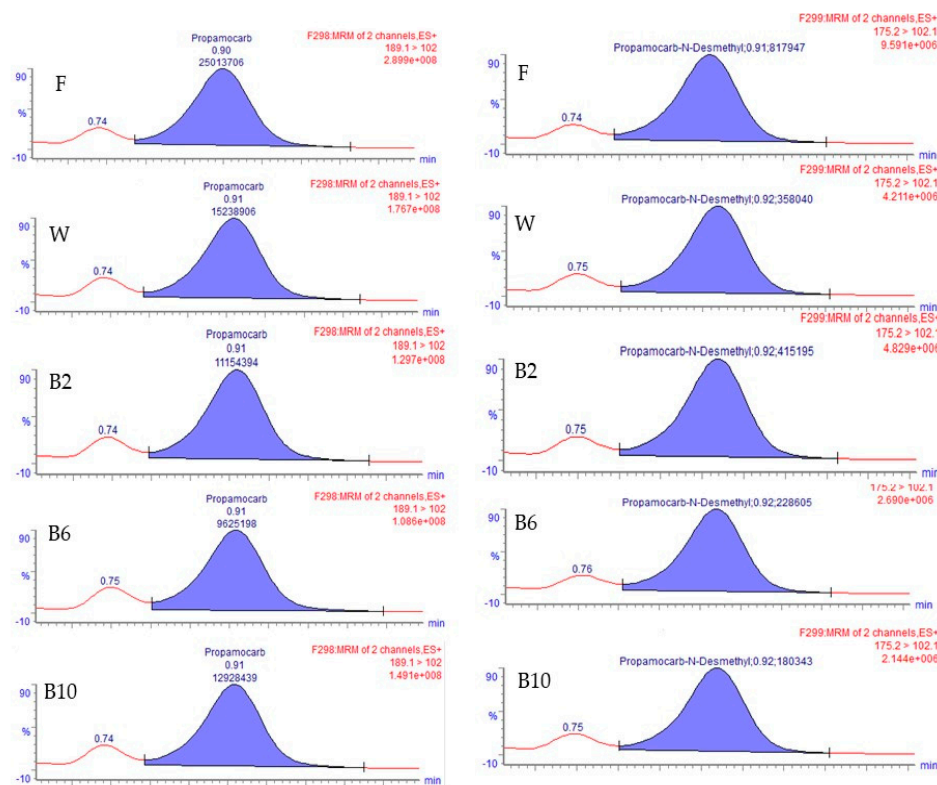


a



b

**Figure S1 (a,b).** Example of LC-MS/MS chromatograms of chlorantraniliprole, fluopicolide, lambda-cyhalothrin (S1a) and propamocarb and propamocarb n-desmethyl (S1b) in spinach samples before (F) and after each treatment: washing (W), blanching 2 min (B2), blanching 6 min (B6) and blanching 10 min (B10).