

Supplementary Material

Table S1. Correlation of systems analysed in this research, evaluating two parameters: the concentration of the oil phase ratio in the secondary emulsion as well as the effect of the thickening agent.

Passes	Evaluation of Oil Phase	Evaluation of Thickening Agent
(W ₁ /O)/W ₂ ratio	10/90	0
	25/75	0
	60/40	0
	25/75	0
XG concentration (wt.%)	25/75	1.25
	25/75	0.25

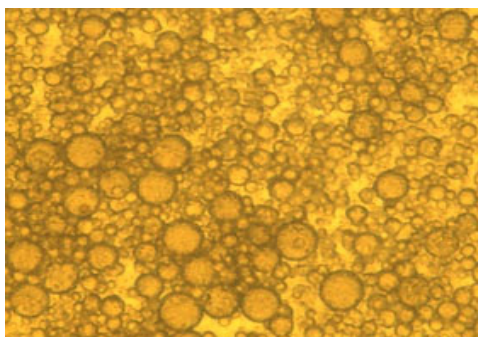


Figure S1. Images of double emulsion droplets (emulsion containing 25/75 of (W₁/O)/W₂) obtained from an optical microscopy.