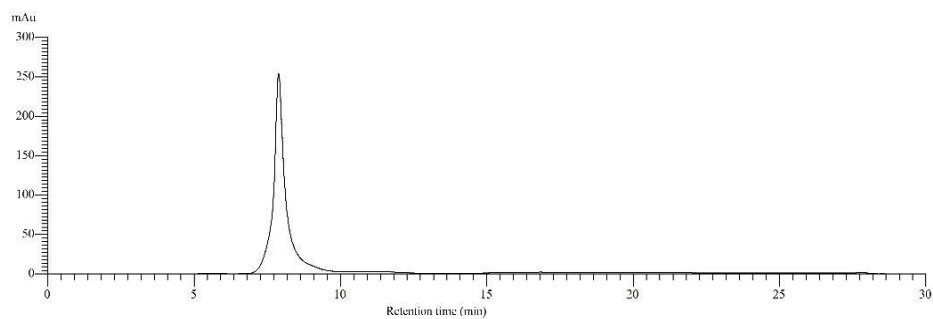
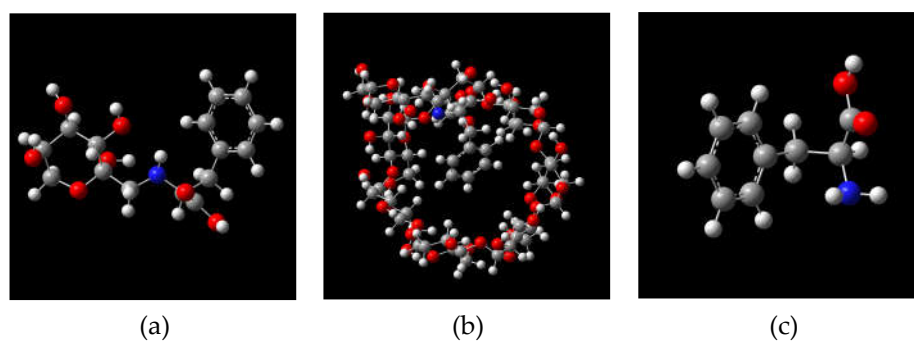


**Figure S1.** (a) MS, (b) MS2, (c) MS3 and (d) MS4 spectra of purified Glu-Phe ARPs.



**Figure S2.** HPLC-DAD chromatogram of purified Glu-Phe ARPs.



**Figure S3.** The optimized structures of (a) Glu-Phe ARPs, (b) CD-ARP complex and (c) Phe.