

Supplementary material

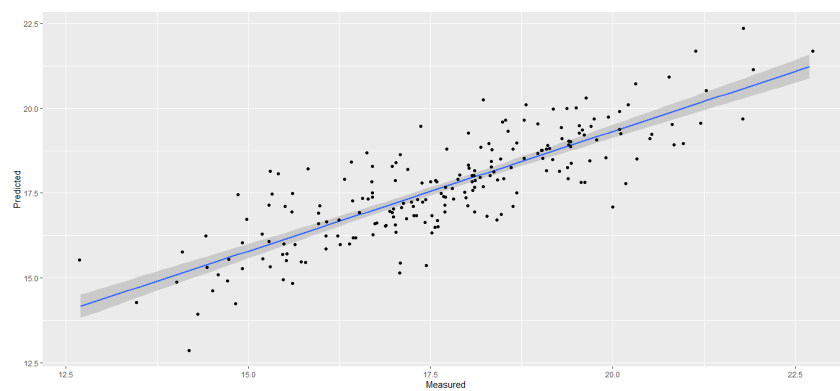


Figure S1. PLS model for TSS on the training stusing the full spectral range

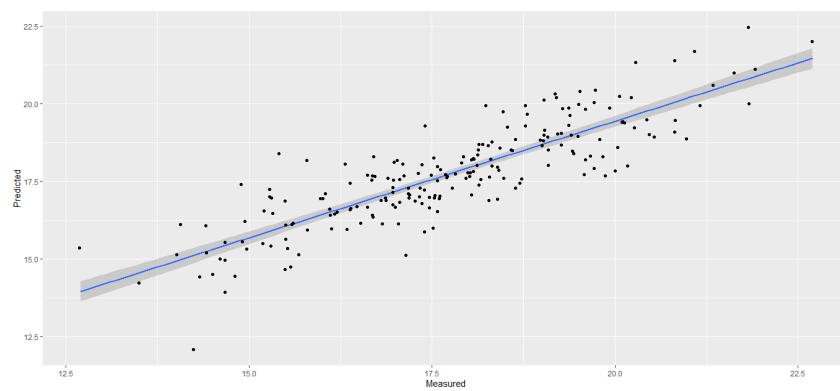


Figure S2. PLS model for TSS on the training set using the selected wave numbers

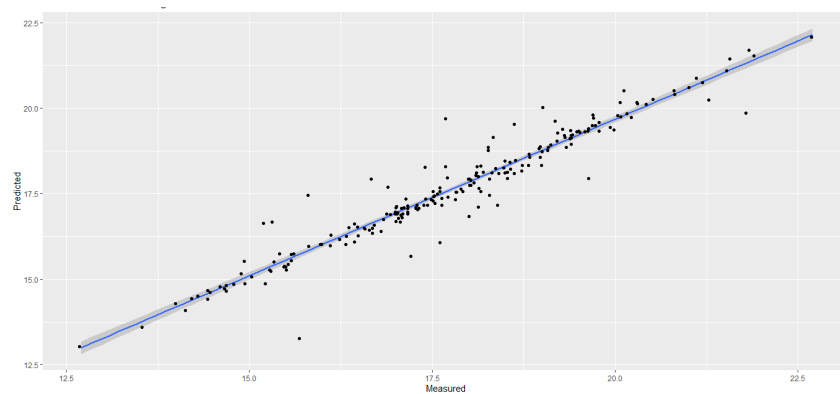


Figure S3. ANN model for TSS on the training set

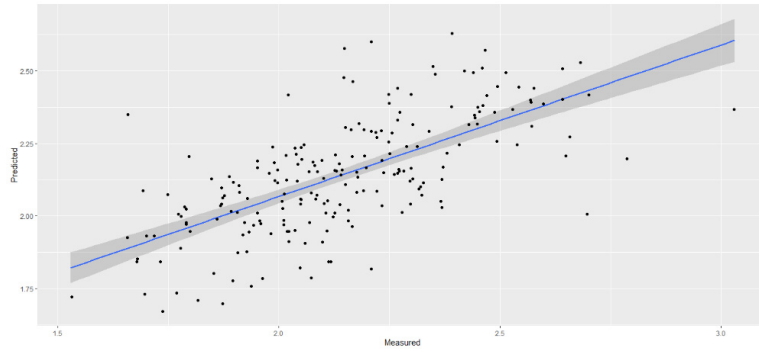


Figure S4. PLS model for BS on the training set using the full spectral range

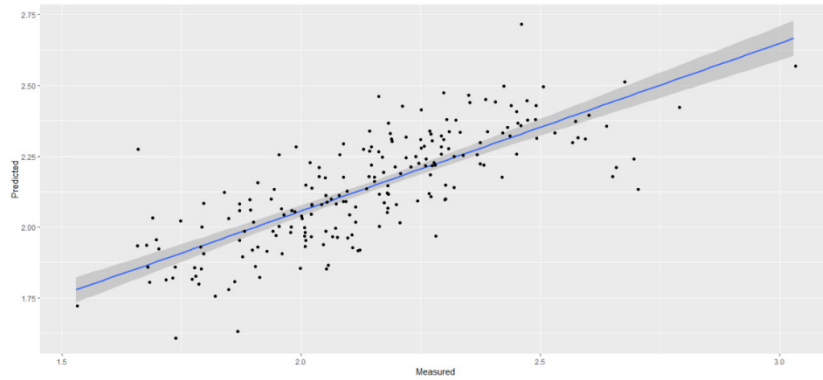


Figure S5. PLS model for BS on the training set using the selected wave numbers

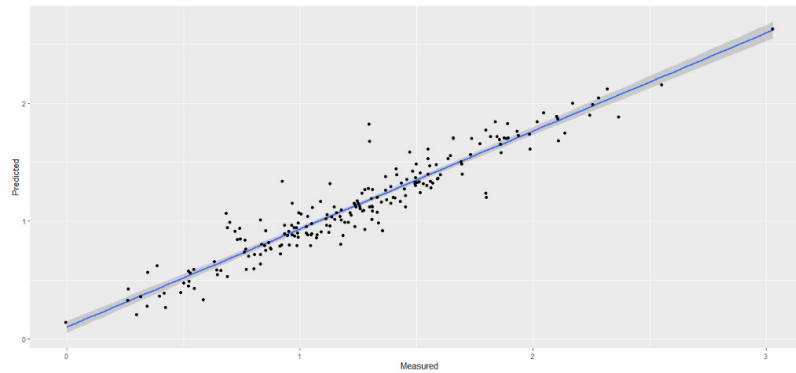


Figure S6. ANN model for BS on the training set using the selected wave numbers

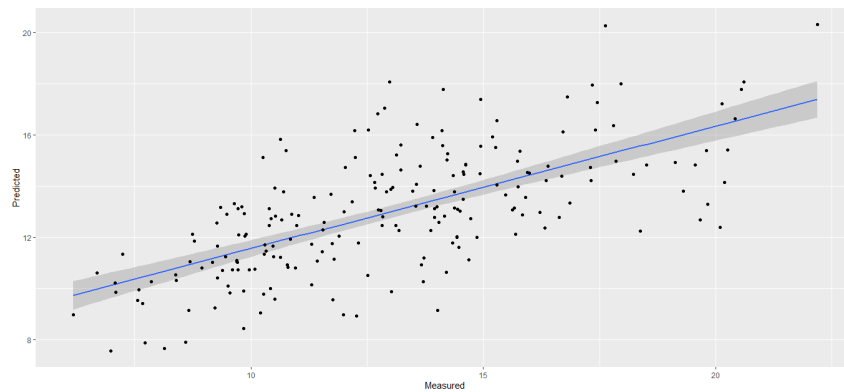


Figure S7. PLS model for BH on the training set using the full spectral range

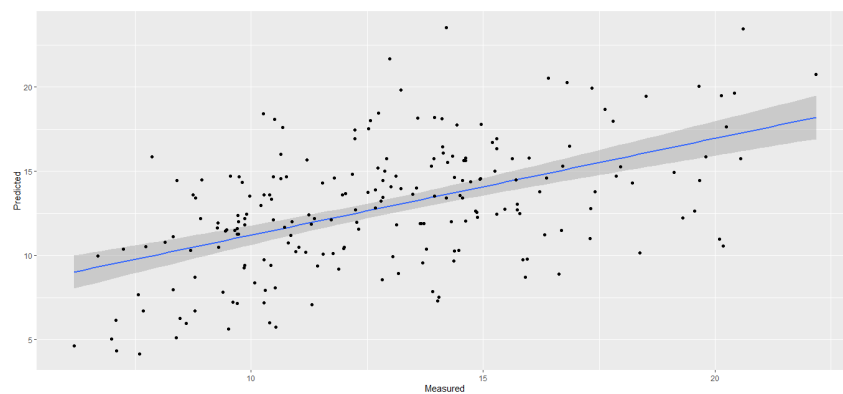


Figure S8. PLS model for BH on the training set using the selected wave numbers

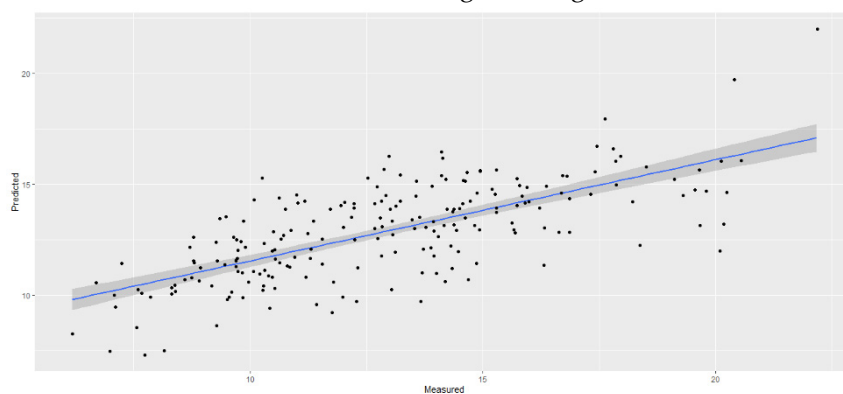


Figure S9. ANN model for BH on the training set using the selected wave numbers

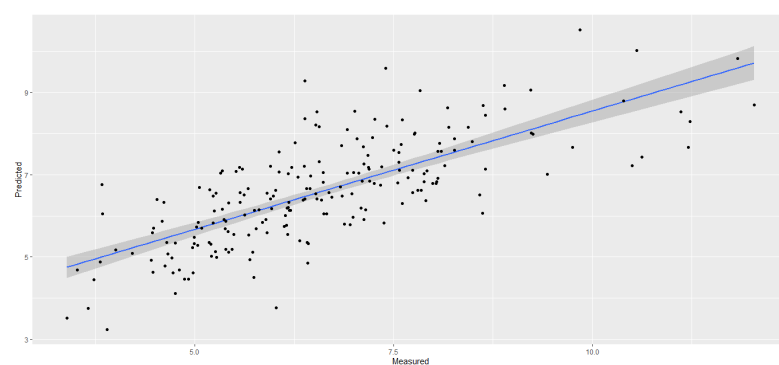


Figure S10. PLS model for BCh on the training set using the full spectral range

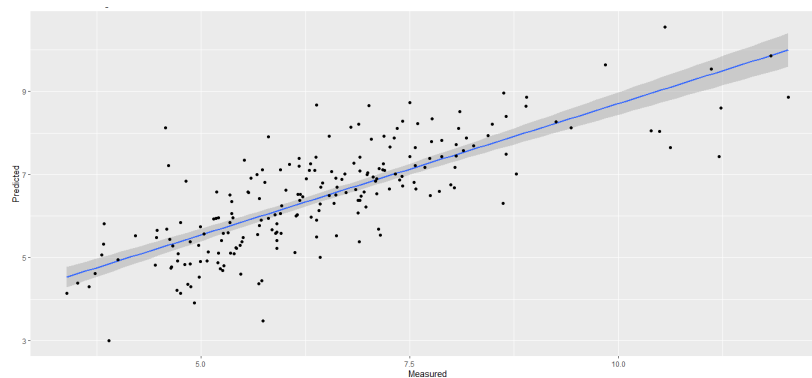


Figure S11. PLS model for BCh on the training set using the selected wave numbers

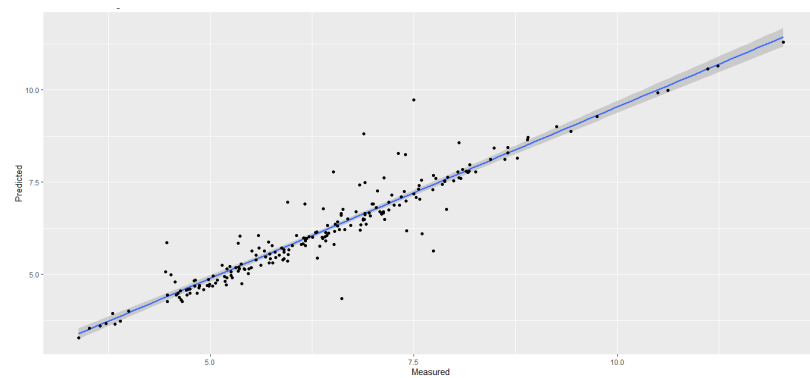


Figure S12. ANN model for BCh on the training set using the selected wave numbers