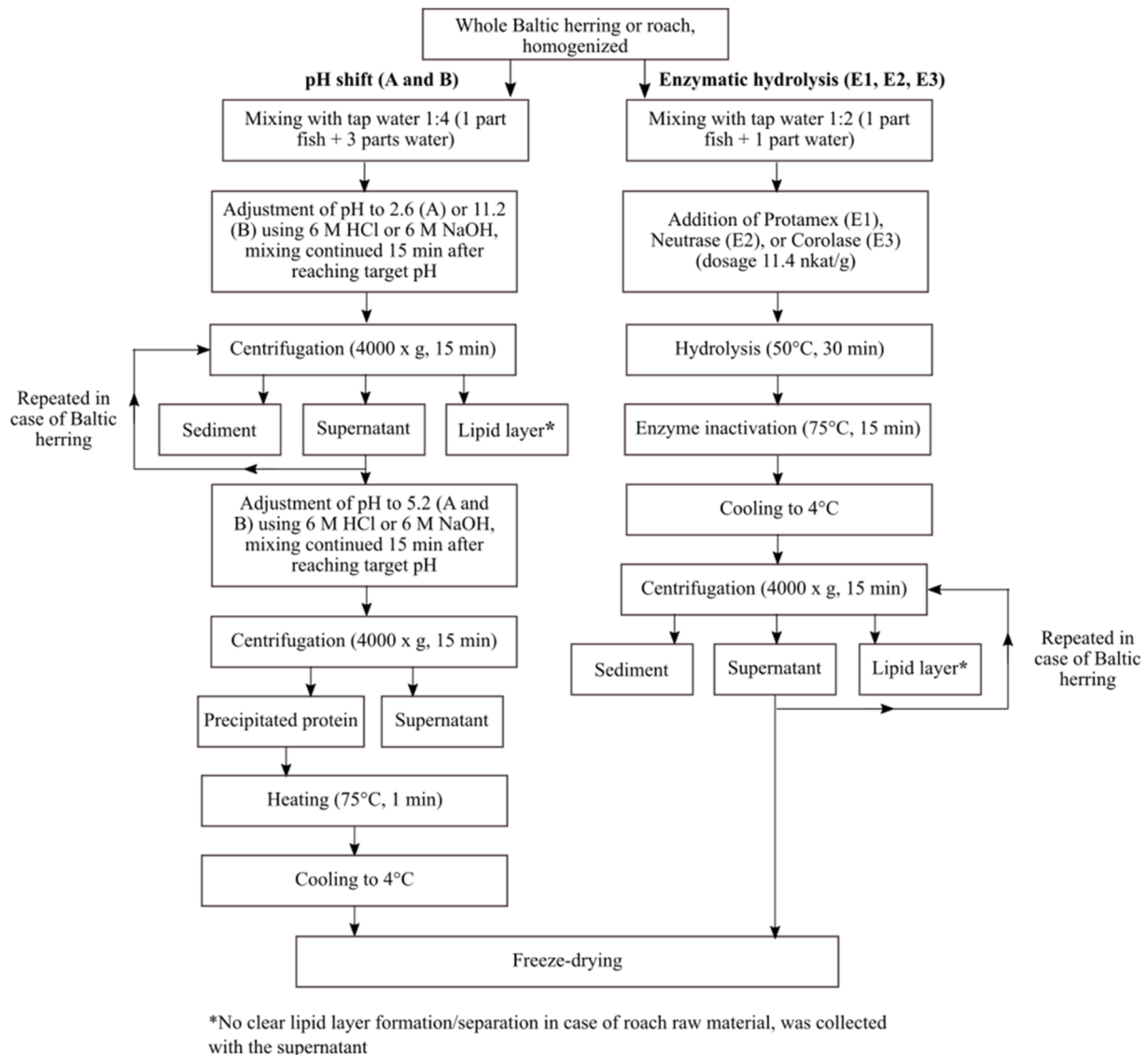


## Supplementary Material

The supporting information is provided: (1) Schematic representation of the production of protein isolates and hydrolysates (**Figure S1**).



**Figure S1.** Schematic representation of acidic (A) and alkaline (B) pH shift process and enzymatic hydrolysis using Protamex (E1), Neutrase (E2), or Corolase (E3), as previously reported by Nisov et al. [20]. Unless stated otherwise, processing was conducted at 4°C and under continuous mixing (75 rpm).