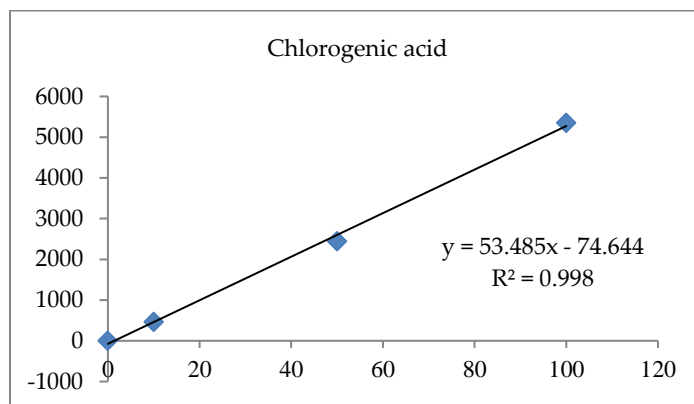
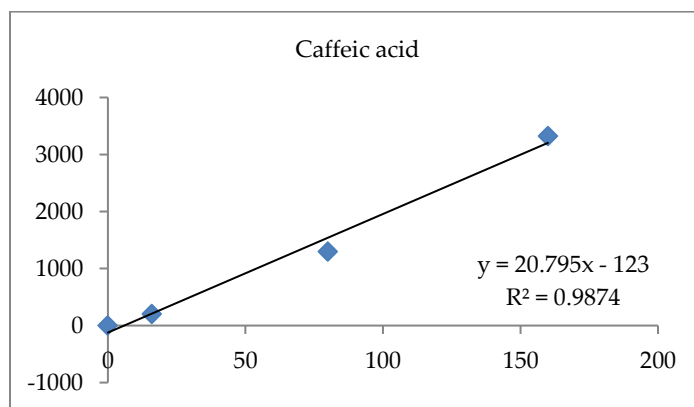


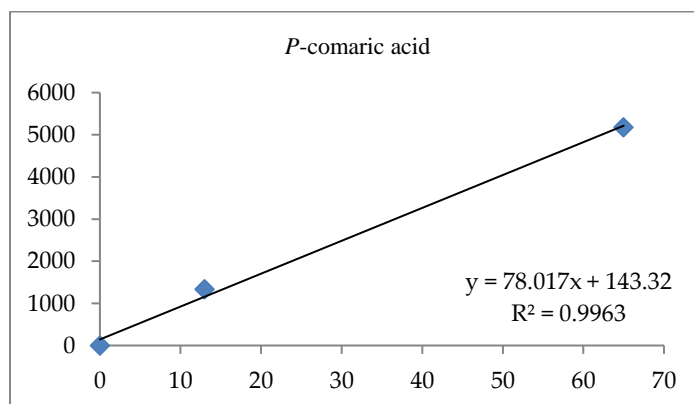
(a)



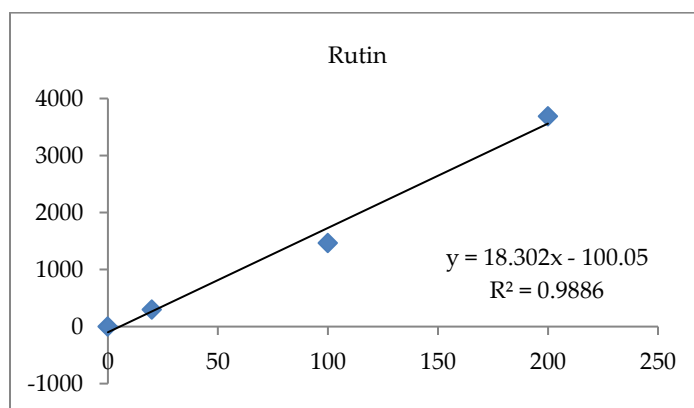
(b)



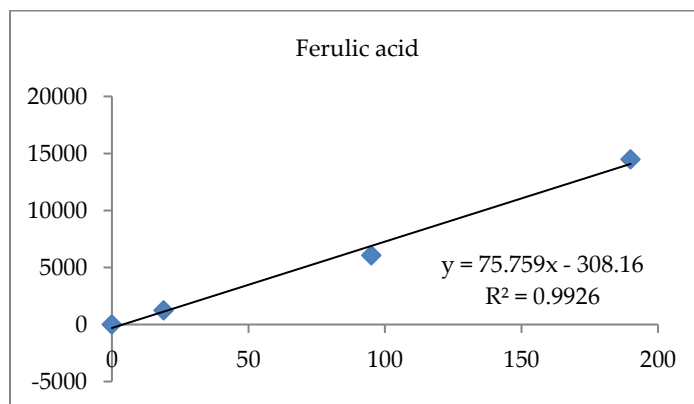
(c)



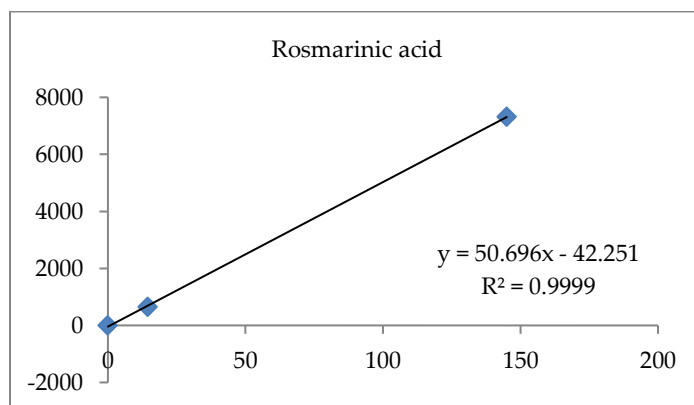
(d)



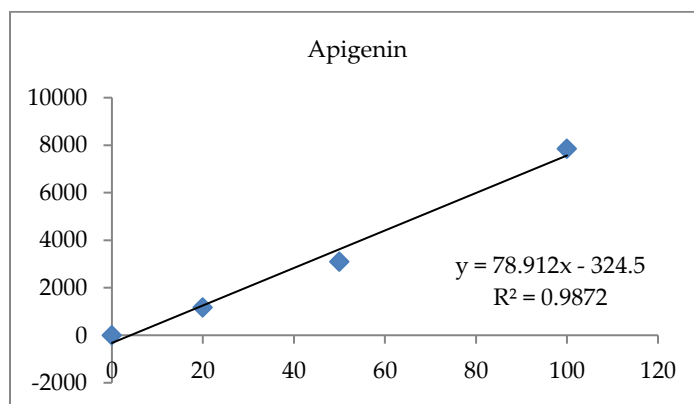
(e)



(f)



(g)



(h)

Fig 1S. Calibration curves of polyphenolic standards a) Gallic acid, b) Chlorogenic acid, c) Caffeic acid, d) *p*-coumaric acid, e) Rutin, f) Ferulic acid, g) Rosmarinic acid, h) Apigenin.