

# **Chemical Authentication and Speciation of Salvia Botanicals: An Investigation Utilizing GC/Q-ToF and Chemometrics**

Joseph Lee<sup>1</sup>, Mei Wang<sup>2\*</sup>, Jianping Zhao<sup>1</sup>, Bharathi Avula<sup>1</sup>, Amar G. Chittiboyina<sup>1</sup>, Jing Li<sup>4</sup>, Charles Wu<sup>4</sup> and Ikhlas A. Khan<sup>1,3,\*</sup>

<sup>1</sup> National Center for Natural Products Research, School of Pharmacy, University of Mississippi, University, MS 38677, United States

<sup>2</sup> Natural Products Utilization Research Unit, Agricultural Research Service, United States Department of Agriculture, University, MS 38677, United States

<sup>3</sup> Division of Pharmacognosy, Department of BioMolecular Sciences, School of Pharmacy, University of Mississippi, University, MS 38677, USA

<sup>4</sup> Botanical Review Team, Office of New Drug Product, Office of Pharmaceutical Quality, Center for Drug Evaluation and Research, Food and Drug Administration, 10903 New Hampshire Ave, Silver Spring, MD 20993

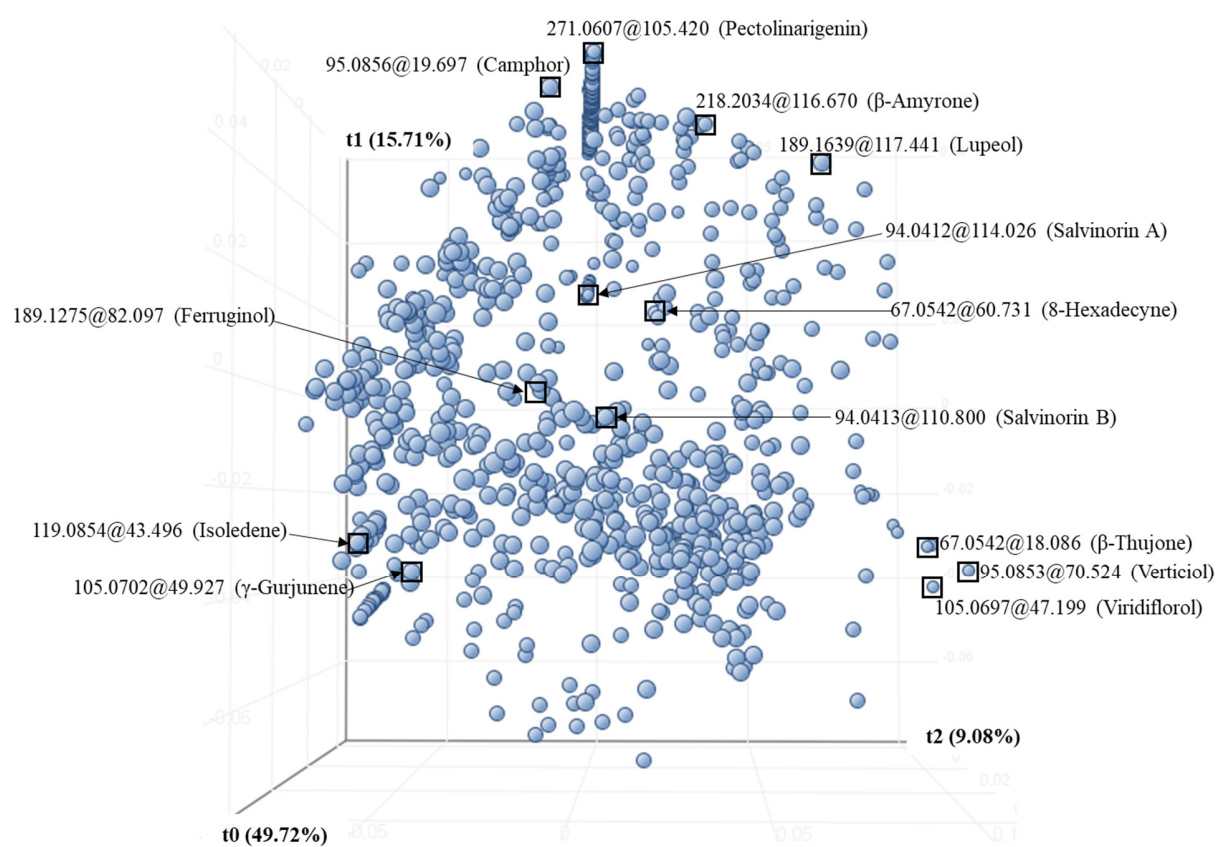
## **Corresponding Author**

\*Dr. Mei Wang or Dr. Ikhlas A. Khan

Tel: +1 662-915-1046 or +1 662-915-7821

E-mail: meiwang@usda.gov or ikhan@olemiss.edu

## Supplemental Material



**Figure S1.** PCA loading plot illustrating suggested species marker compounds.