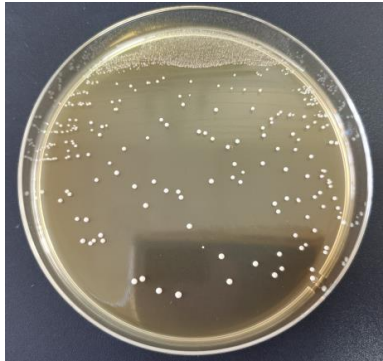
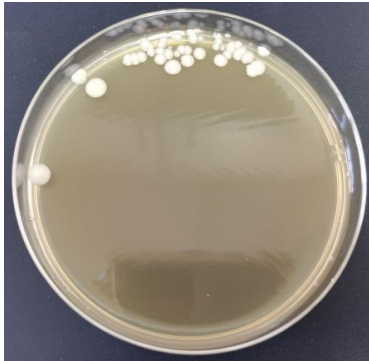


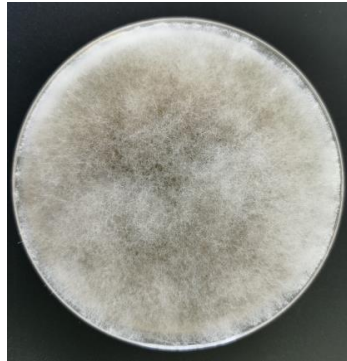
Supplementary



L. plantarum



S. cerevisiae



R. oryzae



A. oryzae



N. sitophila

Figure S1. The growth state of the five strains.

Table S1. Criteria for sensory scoring.

Primary Index	Assessment Indicator Secondary Index	Criteria	Range
Smell (20 points)	Purity	Delicate rice smell with strong unique fermented savory smell, no odor distribution	15~20
		Apparent rice smell with in-apparent unique fermented savory smell, no odor distribution	12~14
		Medium rice smell without unique fermented savory smell, with certain peculiar smell	7~11
		Obvious peculiar smell	0~6
Appearance (20 points)	Color (10 points)	Light yellow or white with bright color	7~10
		Light yellow with general luster	4~6
		Dark yellow and dark in color	0~3
	Degree of whiteness (10 points)	Large cracking with high whiteness	7~10
		Little cracking with slight whiteness	4~6
		No cracking without no whiteness	0~3
Taste (20 points)	Fragrance (10 points)	Strong fragrance without peculiar smell when chewing	9~10
		Faint fragrance without peculiar smell when chewing	6~8
		No fragrance and peculiar smell when chewing	4~6
		No fragrance with obvious peculiar smell when chewing	0~3
	Taste produced by fermentation (10 points)	Obvious nice and unique sour taste featured of fermentation when chewing, no strange taste	9~10
		Weak in unique sour taste featured of fermentation when chewing, no strange taste	6~8
		No obvious unique sour taste featured of fermentation when chewing, no uncomfortable taste	4~6
		No obvious unique sour taste featured of fermentation when chewing, with obvious uncomfortable taste	0~3
Overall acceptability (30 points)	Viscosity or stickiness (10 points)	Clingy but not sticky	8~10
		Less clingy but not stick to teeth	5~7
		Stick to teeth or without viscosity	0~4
	Elasticity or resilience (10 points)	Muscular and chewy	8~10
		Slight muscular and chewy	5~7
		No muscular and chewy	0~4
	Hardness (10 points)	Moderate in hardness and softness	8~10
		Inclined to hard or soft	5~7
		Very hard or soft	0~4
Texture (10 points)	Compactness and cohesiveness (10 points)	Fluffy, uniform dispersed, without agglomeration	7~10
		Less fluffy, slight agglomerate	4~6
		Easy to bond together	0~3