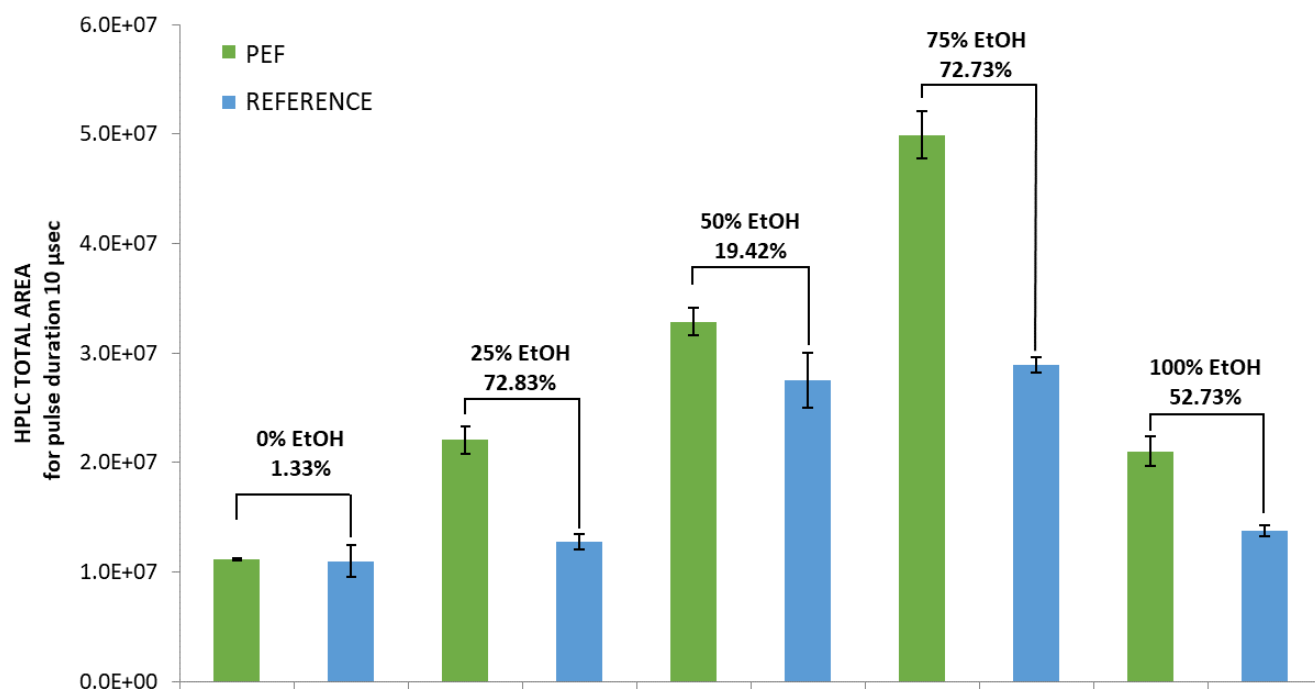


### Figure Legends

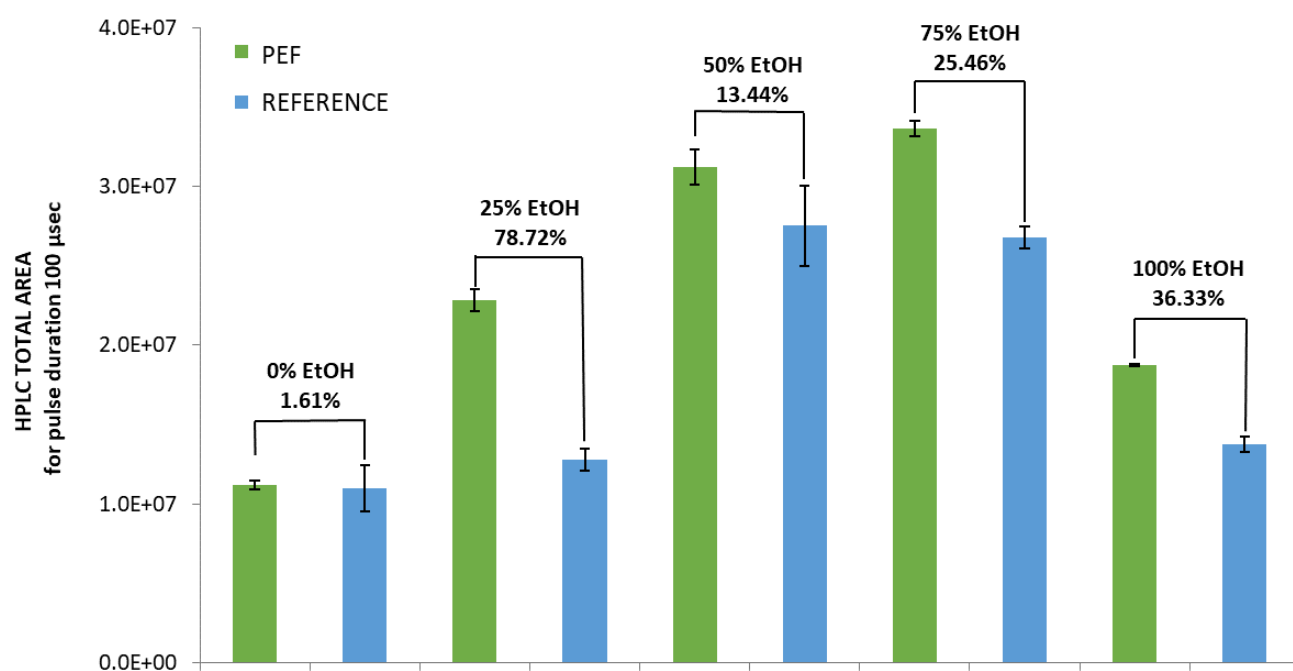
**Figure S1.** HPLC total area for PEF and Reference extracts in five different tested solvents and a pulse duration of 10  $\mu$ sec.

**Figure S2.** HPLC total area for PEF and Reference extracts in five different tested solvents and a pulse duration of 100  $\mu$ sec.

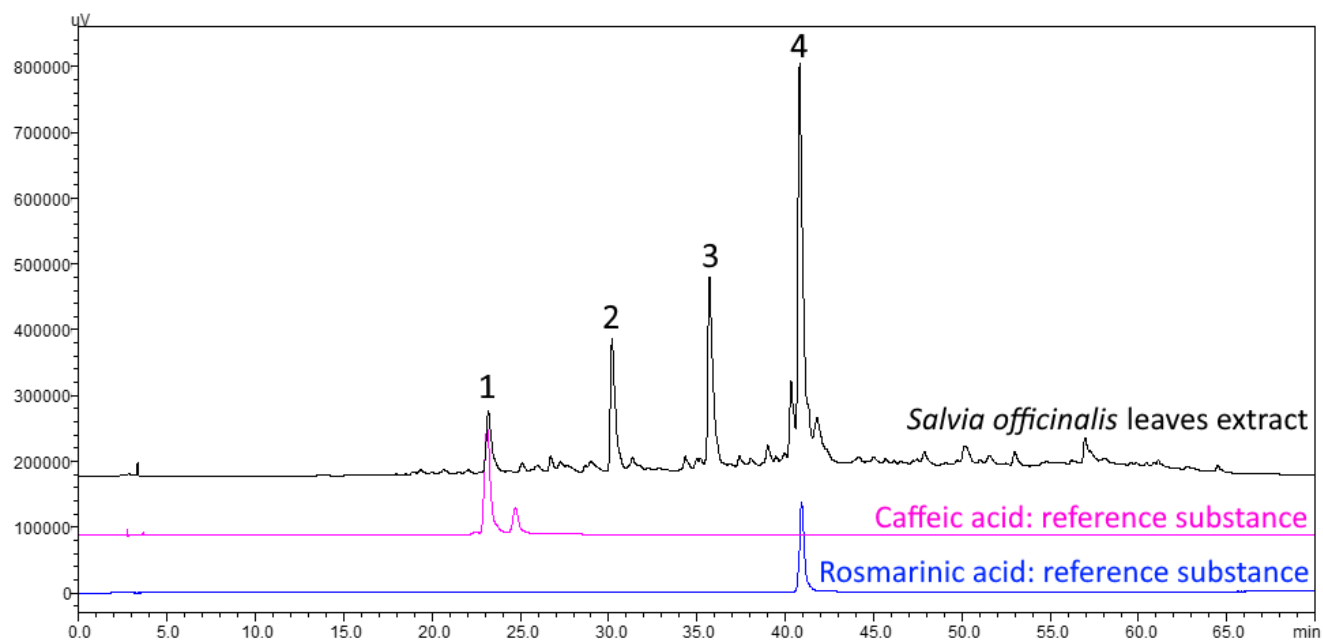
**Figure S3.** Overlay of chromatograms of extract and reference compounds at 320 nm after PEF with pulse duration 100  $\mu$ sec and extraction solvent 25% EtOH. Peak 1: Caffeic acid; Peak 2: 6-Hydroxy-luteolin-7-O-glucoside; Peak 3: Luteolin 7-O-glucuronide; Peak 4: Rosmarinic acid.



**Figure S1.** HPLC total area for PEF and Reference extracts in five different tested solvents and a pulse duration of 10  $\mu$ sec.



**Figure S2.** HPLC total area for PEF and Reference extracts in five different tested solvents and a pulse duration of 100  $\mu$ sec.



**Figure S3.** Overlay of chromatograms of extract and reference compounds at 320 nm after PEF with pulse duration 100  $\mu$ sec and extraction solvent 25% EtOH. Peak 1: Caffeic acid; Peak 2: 6-Hydroxy-luteolin-7-O-glucoside; Peak 3: Luteolin 7-O-glucuronide; Peak 4: Rosmarinic acid.