

Figure S 1: Gas liquid chromatography chromatogram 277 of the methyl esters from *Camelina sativa* seeds.

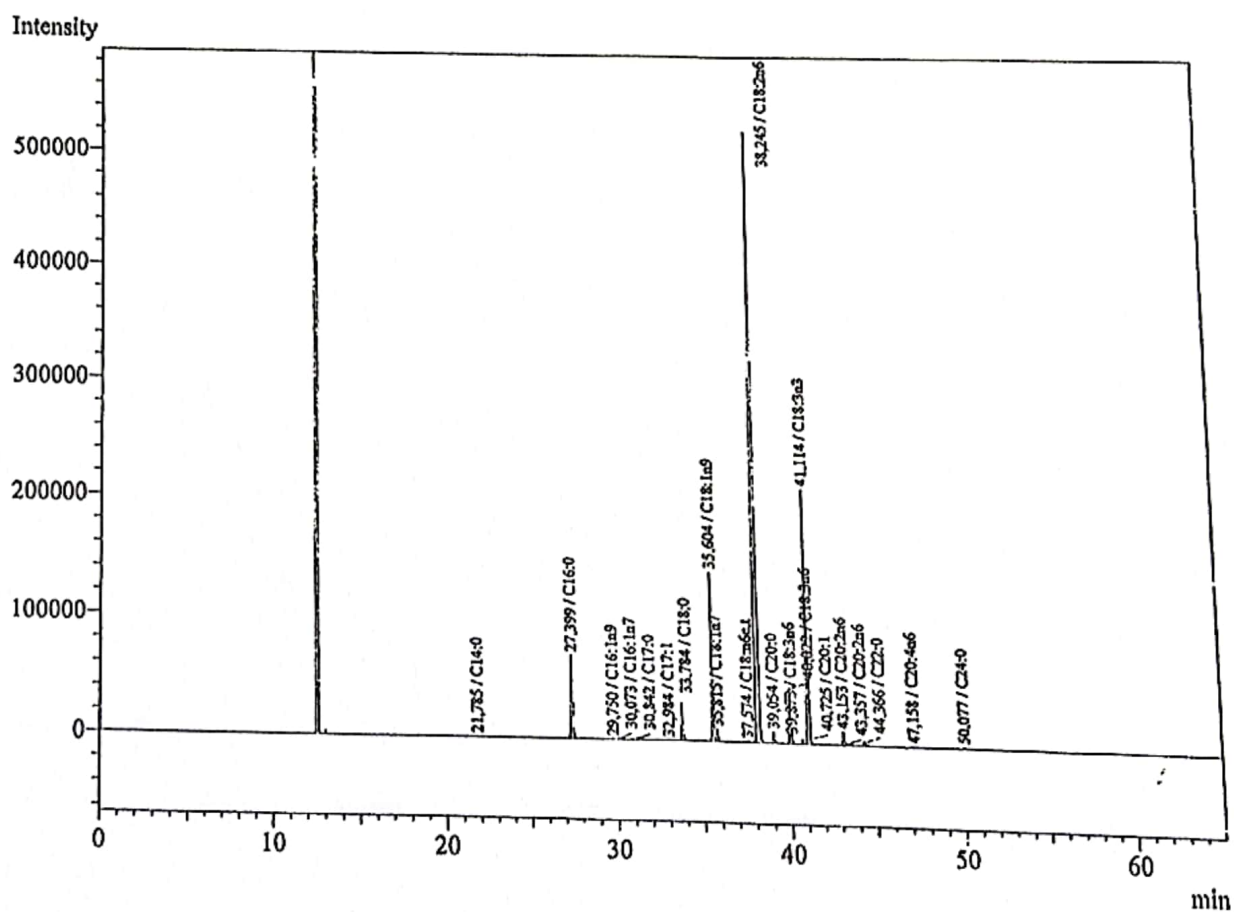


Figure S 2: Gas liquid chromatography chromatogram 257 of the metil esters from Cannabis sativa seeds.

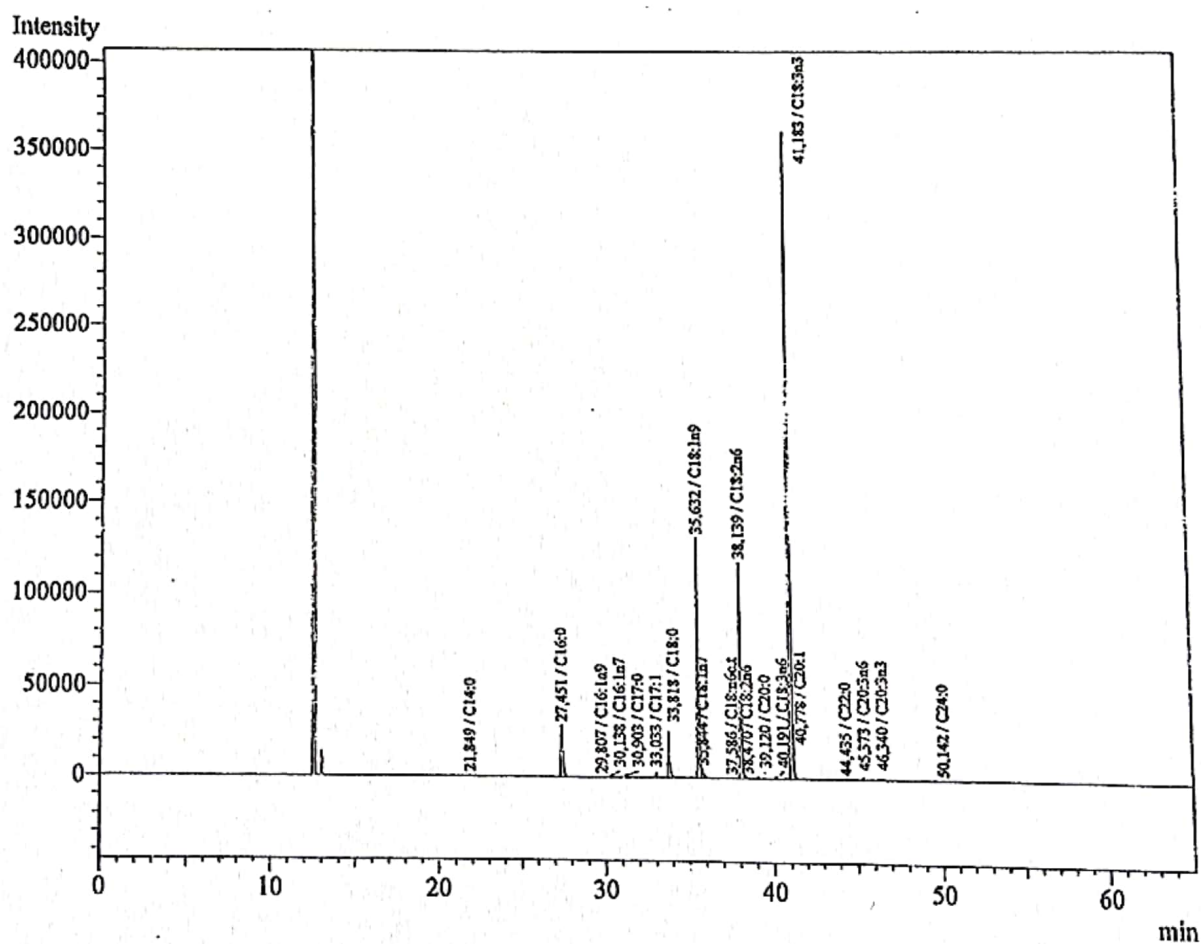


Figure S 3: Gas liquid chromatography chromatogram 274 of the metil esters from *Linum usitatissimum* seeds.