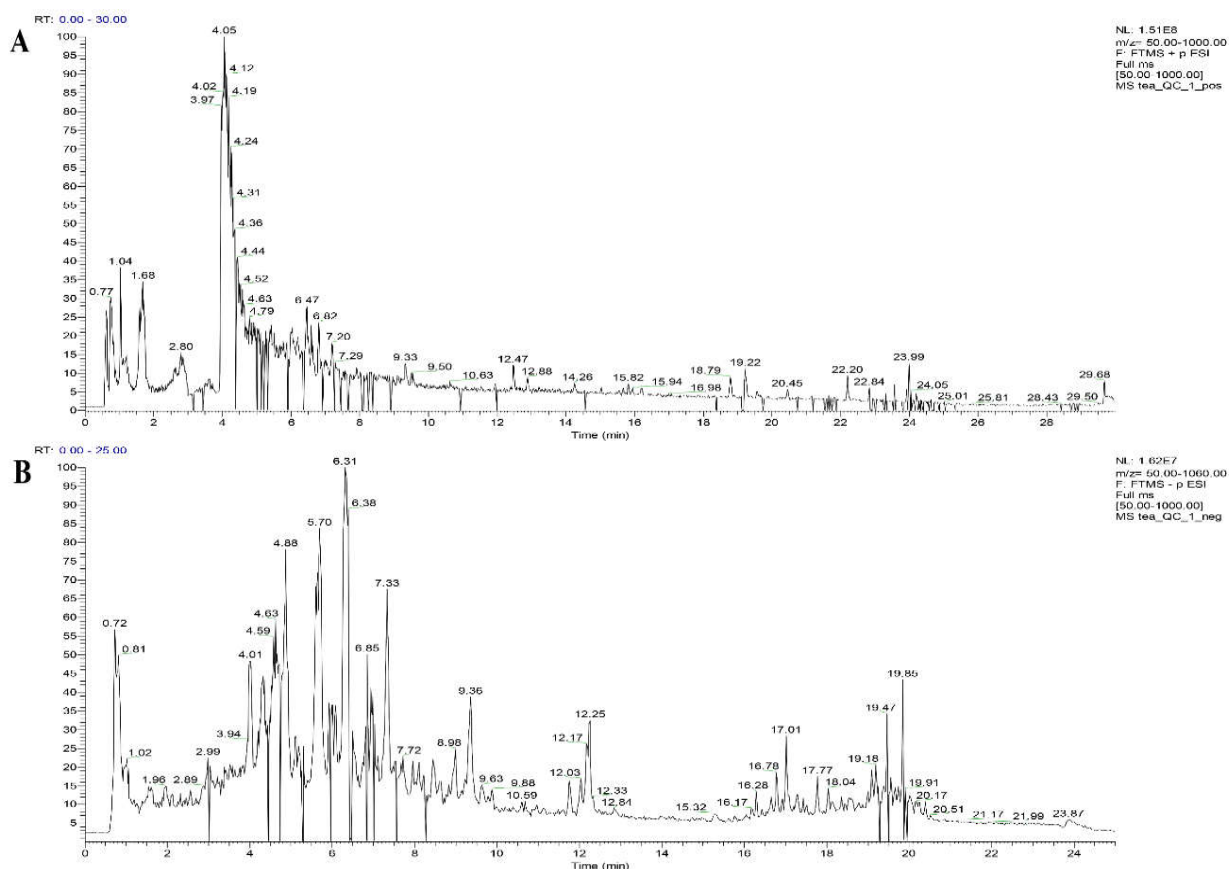


# Supplrmntary Materials



**Figure 1.** The total ion chromatogram (TIC) of UHPLC-Orbitrap-MS/MS in ZJT. (A): positive ion mode, (B): negative ion mode.

**Table S1.** Contents of catechins and caffeine in ZJT and YKT (%) ( $n = 3$ , mean  $\pm$  SEM).

Sample	YKT	ZJT
EGC	1.439 $\pm$ 0.093	1.891 $\pm$ 0.164
C	0.253 $\pm$ 0.065	0.577 $\pm$ 0.109 #
EC	0.668 $\pm$ 0.039	1.229 $\pm$ 0.100 ##
EGCG	12.500 $\pm$ 1.048	7.194 $\pm$ 0.709 **
ECG	3.282 $\pm$ 0.273	3.426 $\pm$ 0.343
Caffeine	4.051 $\pm$ 0.307	3.792 $\pm$ 0.320
Total catechin	18.370 $\pm$ 1.524	14.400 $\pm$ 1.425

Note: EGC, (-)-epigallocatechin; C, (+)-Catechin; EC, (-)-epi-catechin; EGCG, (-)-epigallocatechin gallate; ECG, (-)-epicatechin gallate; #  $p < 0.05$ , ##  $p < 0.01$ , less content than ZJT; \*\*  $p < 0.01$ , more content than ZJT.