

Table S1: Results from essential oil and rosemary extracts toxicity experiments.

Strain	NEGATIVE CONTROL	Rosemary EO (5%)	Rosemary extract (95%)	POSITIVE CONTROL
TA98	Non toxic	Non toxic	Non toxic	Toxic
TA100	Non toxic	Non toxic	Non toxic	Toxic

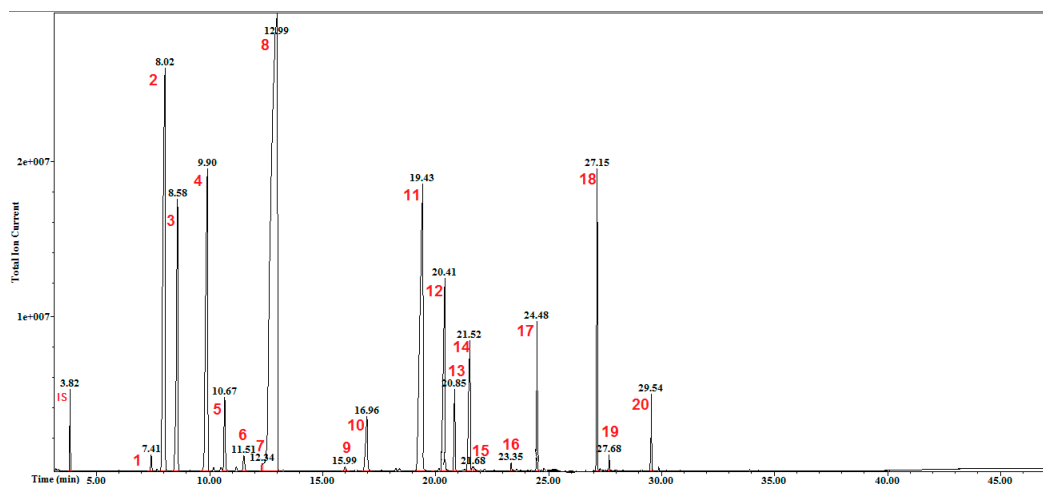


Figure S1: GC-MS chromatogram of rosemary essential oil

IS: Internal Standard (octane), 1: Tricyclene, 2: α -Pinene, 3: Camphene, 4: β -Pinene, 5: Myrcene, 6: 3-Carene, 7: p-Cymene, 8:Eucalyptol (1-8 Cineole), 9: Terpinolene, 10: Linalool, 11: Camphor, 12:Borneol, 13: Terpinen-4-ol, 14: α -Terpineol, 15:Myrtenol, 16:Carvone, 17: Bornyl acetate, 18: E- Caryophellene, 19: α -Humulene, 20: Caryophellene oxide.