

## SUPPLEMENTARY MATERIALS

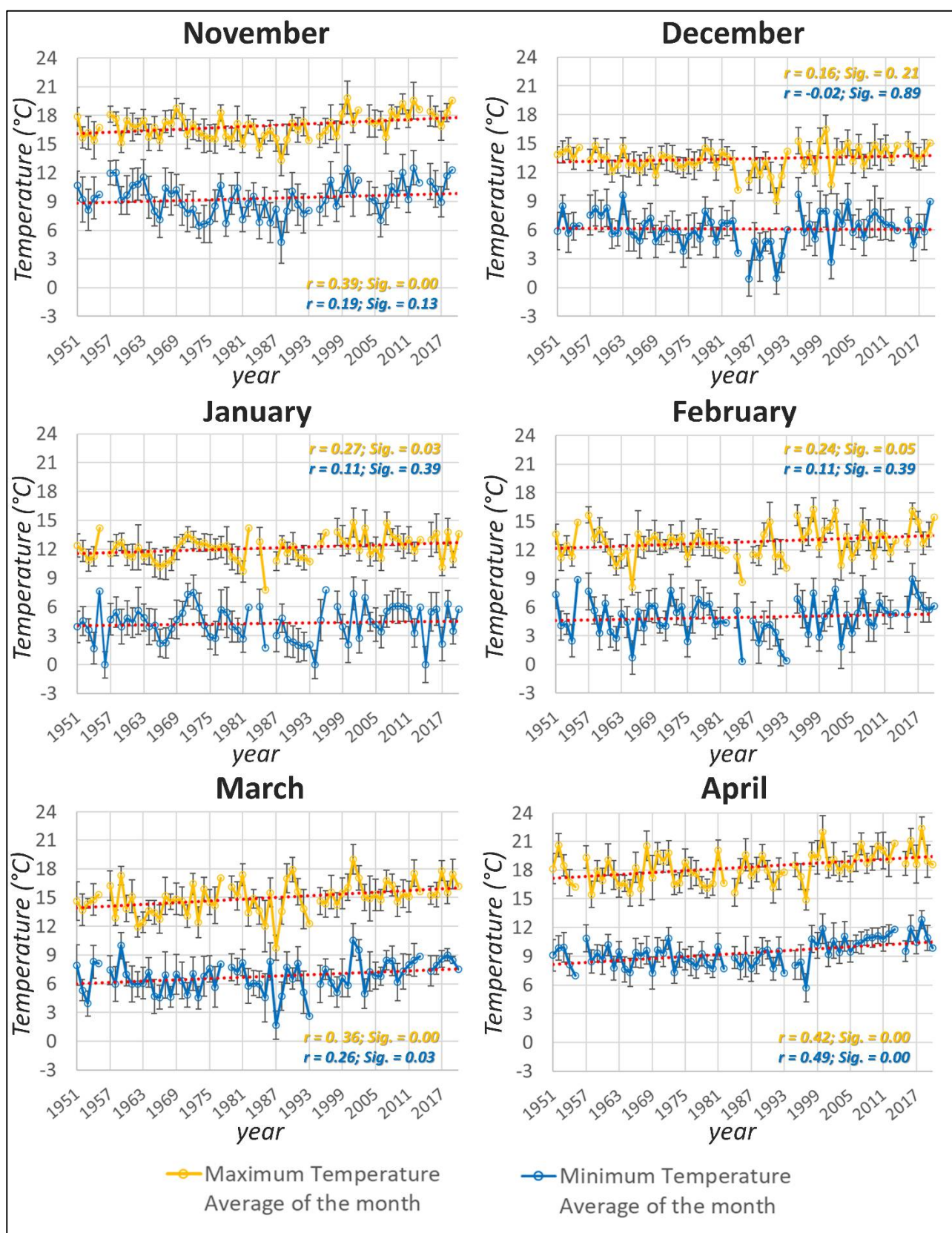


Figure S1: Maximum and minimum temperature trends during the period 1951-2020. Bars indicate the standard deviation of the records within the month. Red lines indicate the linear regression.

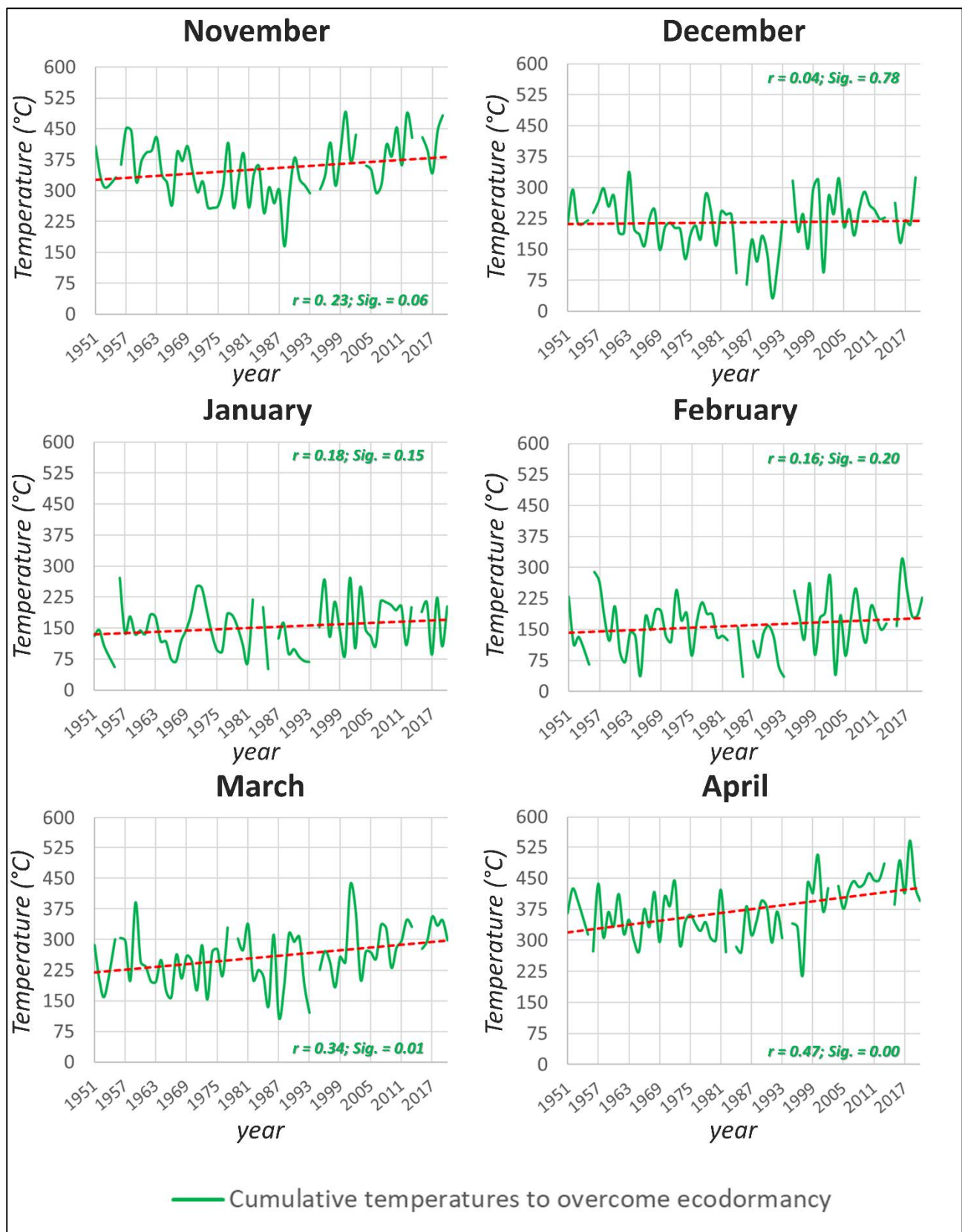


Figure S2: Trends of the cumulative temperatures to overcome ecodormancy during the period 1951-2020. Red lines indicate the linear regression.