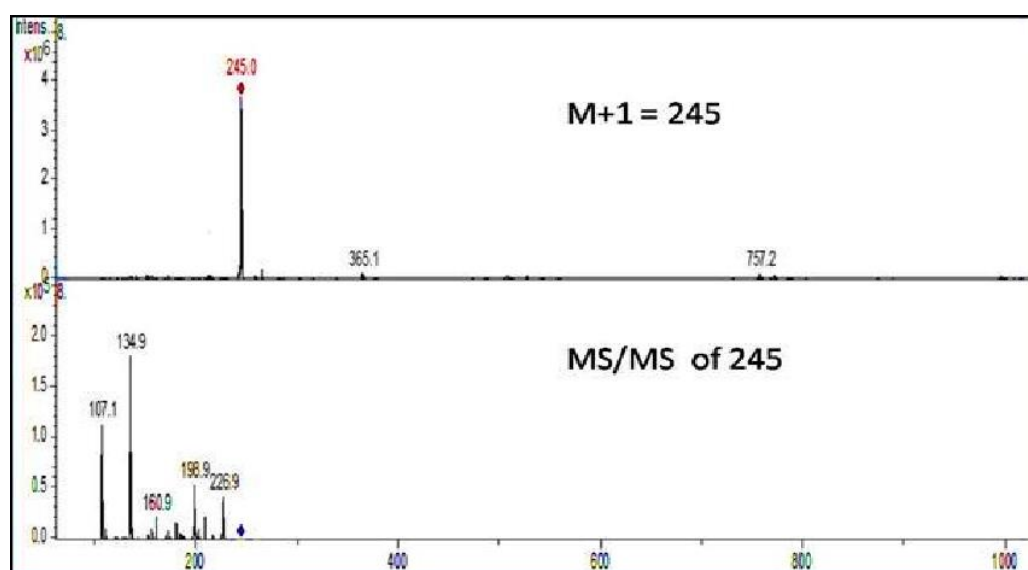


## Supplementary Material



**Figure S1.** MS and MS/MS data of oxyresveratrol



**Figure S2.** Agar spot assay indicating inhibition of *S. enterica* overlayed with different concentrations of oxyresveratrol (MIC, MIC/2 and MIC/4) with *L. fermentum* ASBT-2. Control was culture of *L. fermentum* spotted without compound.