

Figure S1: Internal can temperatures during thermal processing for canned pet foods containing select hydrocolloids ¹.

¹ D = 1% dextrose; DG = 0.5% guar gum and 0.5% dextrose; KCG = 0.5% guar gum and 0.5% kappa carrageenan; LBG = 0.5% guar gum and 0.5% locust bean gum; XGG = 0.5% guar gum and 0.5% xanthan gum.

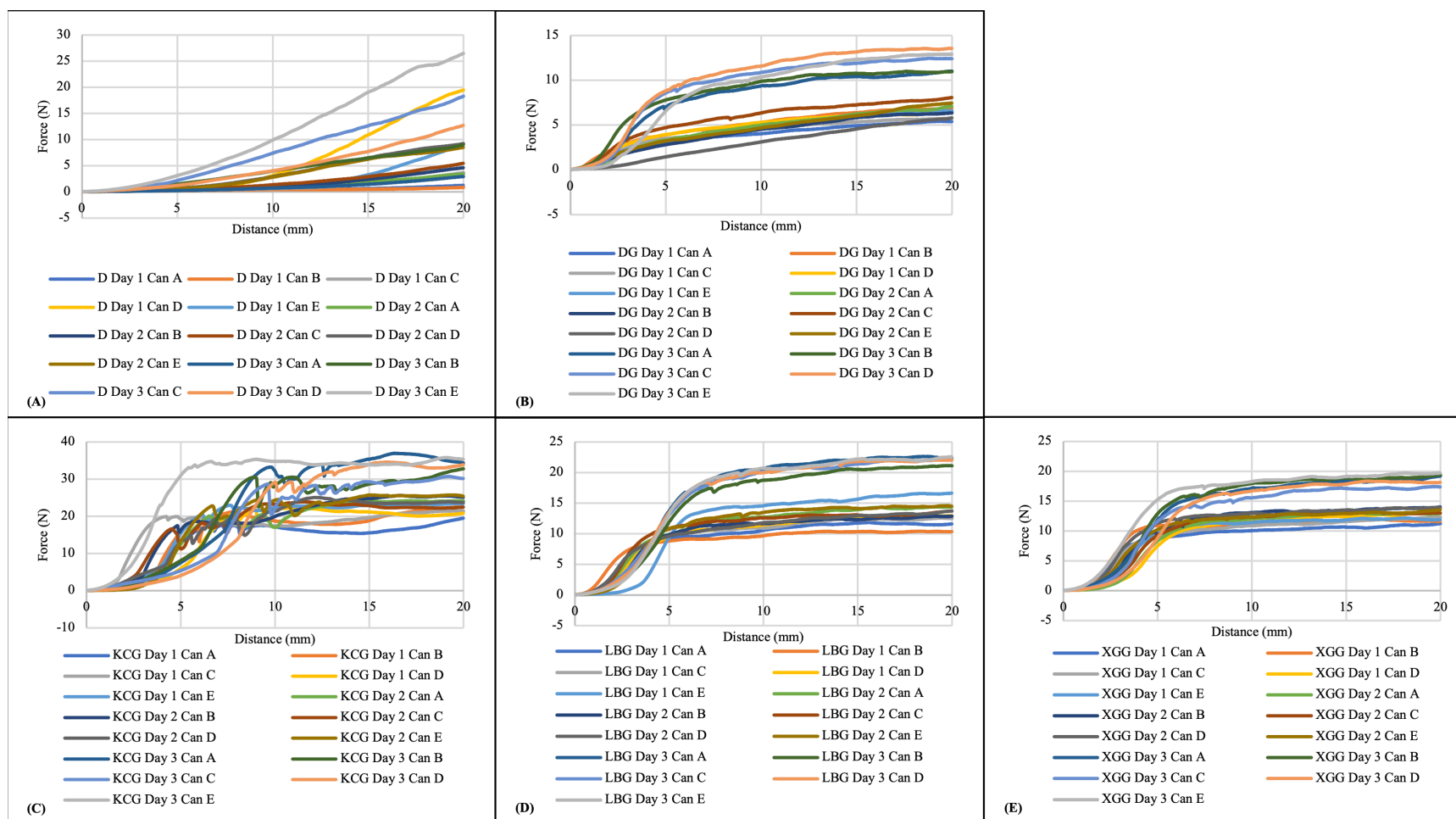


Figure S2: Force deformation curves from modified back extrusion procedure applied to thermally processed canned pet foods containing select hydrocolloids¹.

¹ D = 1 % dextrose; DG = 0.5% guar gum and 0.5% dextrose; KCG = 0.5% guar gum and 0.5% kappa carrageenan; LBG = 0.5% guar gum and 0.5% locust bean gum; XGG = 0.5% guar gum and 0.5% xanthan gum.