

# Graphene-assisted Electromagnetically Induced Transparency-like Terahertz Meta-Biosensor for Ultra-Sensitive Detection of Ovalbumin

Ruochen Xu <sup>1</sup>, Pibin Bing <sup>1,\*</sup>, Xin Yan <sup>2,\*</sup>, Haiyun Yao <sup>3</sup>, Lanju Liang <sup>3</sup>, Zhenhua Li <sup>3</sup>, Ziqun Wang <sup>3</sup>, Xiaofei Hu <sup>3</sup>, Meng Wang <sup>3</sup> and Jianquan Yao <sup>4</sup>

<sup>1</sup> School of Electric Power, North China University of Water Resources and Electric Power, Zhengzhou 450045

<sup>2</sup> School of Information Science and Engineering, Zaozhuang University, Zaozhuang 277160, China

<sup>3</sup> School of Opto-electronic Engineering, Zaozhuang University, Zaozhuang 277160, China

<sup>4</sup> The Key Laboratory of Opto-Electronics Information and Technology, Institute of Laser and Opto-Electronics, College of Precision Instruments and Opto-Electronics Engineering, Tianjin University, Tianjin 300072, China

\* Correspondence: bing463233@163.com (P.B.); yxllj68@126.com (X.Y.)

The following are the results of the fits for the five concentration transmission spectra.

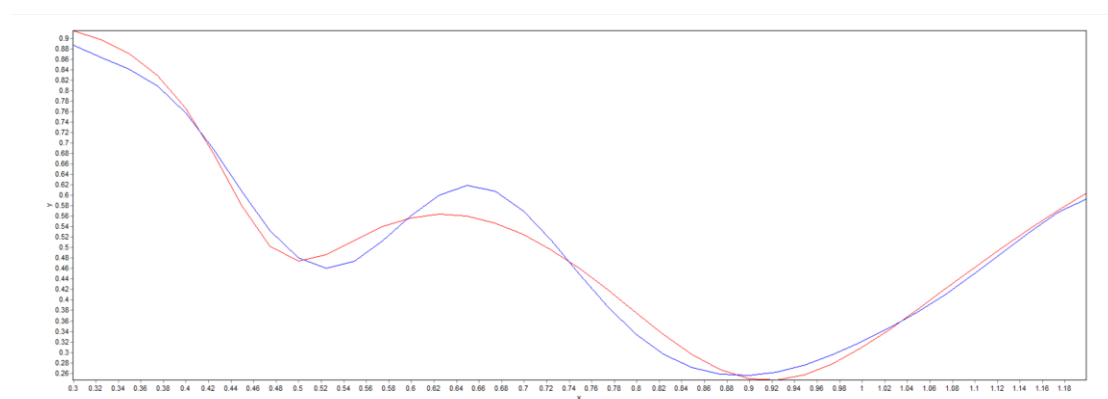


Figure S1. Results of data fitting at Bare concentration (R-square is 0.97853)

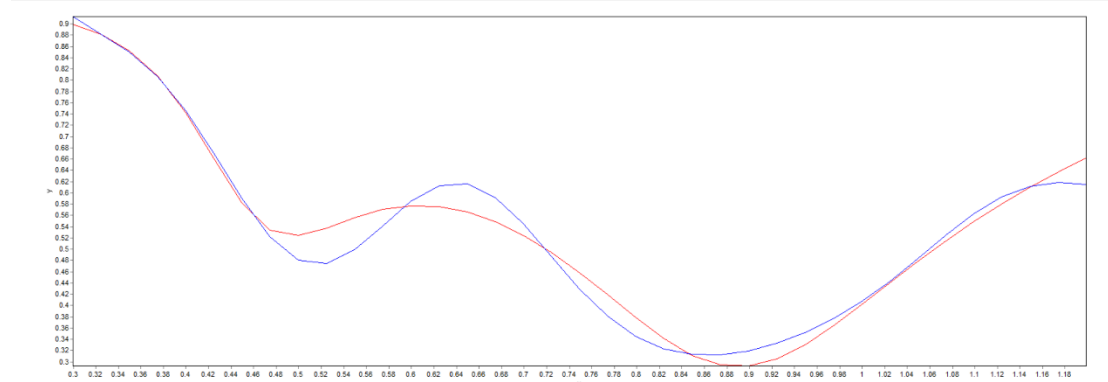


Figure S2. Results of data fitting at C1 concentration (R-square is 0.97265)

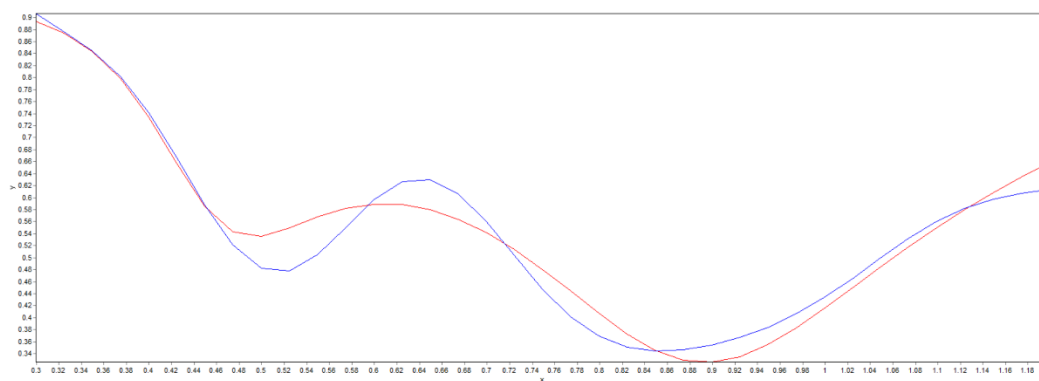


Figure S3. Results of data fitting at C2 concentration (R-square is 0.96050)

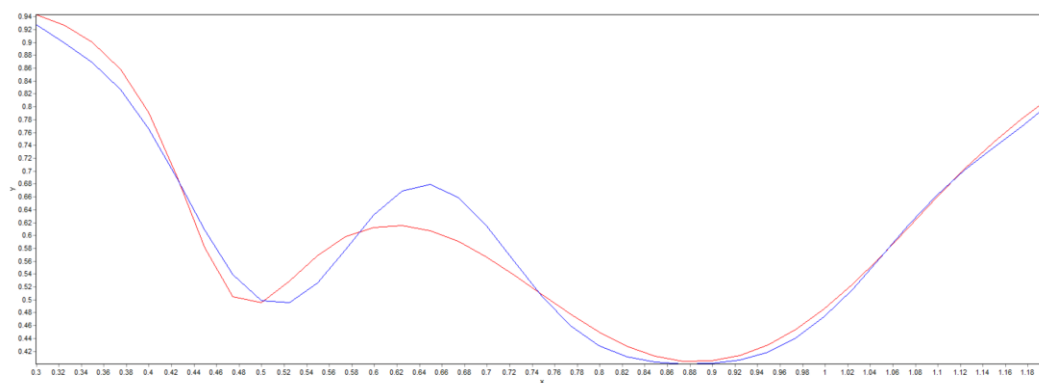


Figure S4. Results of data fitting at C3 concentration (R-square is 0.96930)

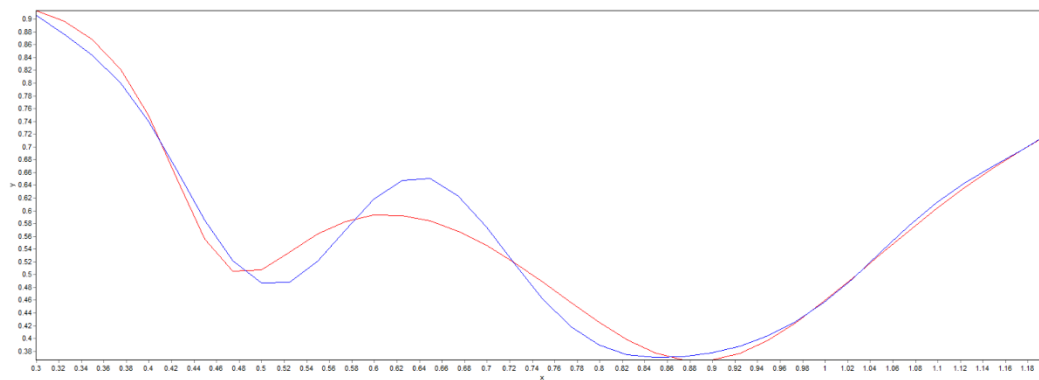


Figure S5. Results of data fitting at C3 concentration (R-square is 0.96911)