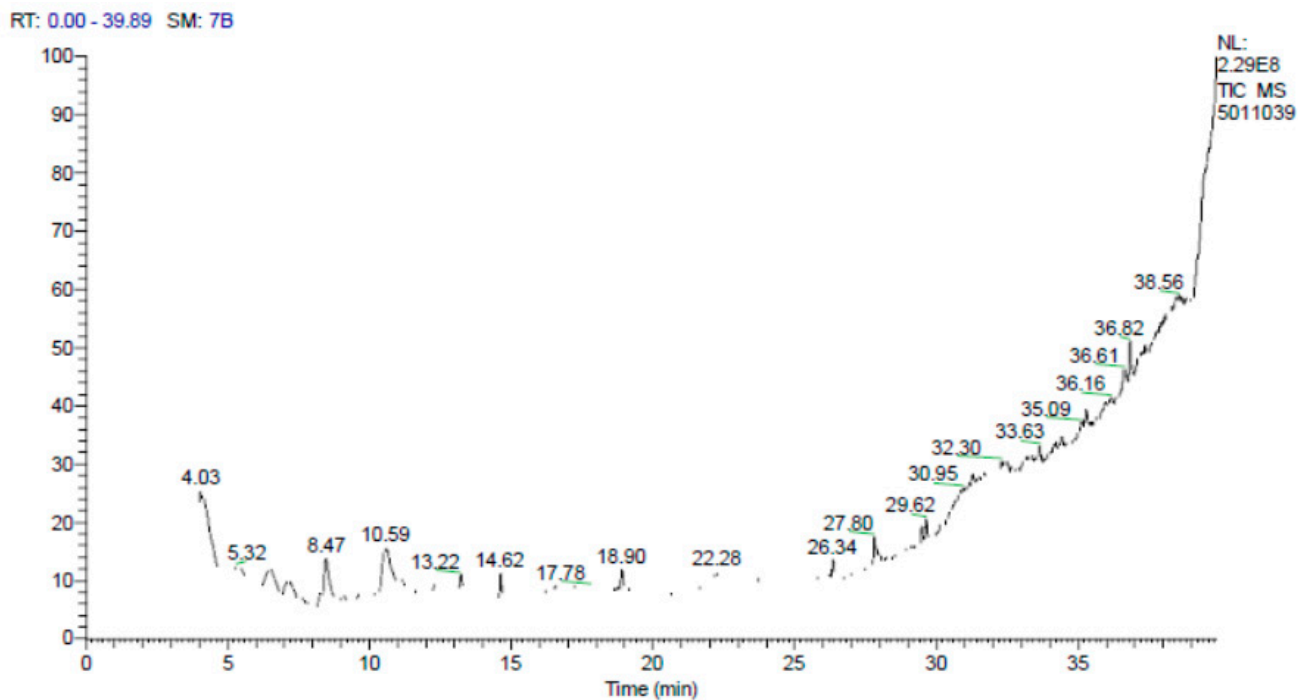


Table S1: the GC mass of propolis extracts



| R.t | Compound name | Percentage % | Molecular weight | Molecular formula |
|-------|--|--------------|------------------|--|
| 4.06 | D-Fructose, diethyl mercaptal, pentaacetate | 13.66 | 496 | C ₂₀ H ₃₂ O ₁₀ S ₂ |
| 6.51 | 2,4:3,5-Dimethylene-l-iditol | 13.01 | 214 | C ₁₃ H ₂₆ O ₂ |
| 7.10 | 1-(Cyclopropyl-nitro-methyl)-cyclopentanol | 7.90 | 158 | C ₈ H ₁₄ O ₃ |
| 8.46 | Pentanoic acid, 2-acetyl-4-methyl-, ethyl ester | 10.13 | 186 | C ₁₀ H ₁₈ O ₃ |
| 10.52 | 2(3H)-Furanone, 5-heptyldihydro- | 8.67 | 184 | C ₁₁ H ₂₀ O ₂ |
| 10.58 | Melezitose | 6.40 | 504 | C ₁₈ H ₃₂ O ₁₆ |
| 13.22 | α-D-Glucopyranose,4-O-α-D-galactopyranosyl- | 2.26 | 342 | C ₁₂ H ₂₂ O ₁₁ |
| 14.62 | Undecanoic acid, 11-amino- | 4.18 | 201 | C ₁₁ H ₂₃ NO ₂ |
| 18.90 | 6,9-Octadecadiynoic acid, methyl ester | 3.72 | 290 | C ₁₉ H ₃₀ O ₂ |
| 26.34 | 16-Octadecenoic acid, methyl ester | 3.71 | 296 | C ₁₉ H ₃₆ O ₂ |
| 27.80 | Linoleic acid ethyl ester | 5.00 | 308 | C ₂₀ H ₃₆ O ₂ |
| 29.48 | 9,12-Octadecadienoic acid (Z,Z)-, 2-hydroxy-1-(hydroxymethyl)ethyl ester | 6.29 | 354 | C ₂₁ H ₃₈ O ₄ |
| 35.28 | Betulin | 8.04 | 442 | C ₃₀ H ₅₀ O ₂ |
| 36.82 | Trilinolein | 6.91 | 878 | C ₅₇ H ₉₈ O ₆ |