

Supplementary Materials

# A Study on the Reaction Kinetics of Anaerobic Microbes Using Batch Anaerobic Sludge Technique for Beverage Industrial Wastewater

Um-e-Habiba <sup>1</sup>, Muhammad Saleem Khan <sup>1</sup>, Waseem Raza <sup>2</sup>, Hajera Gul <sup>3</sup>, Maham Hussain <sup>1,4</sup>, Barizah Malik <sup>5</sup>, Mudassar Azam <sup>6,7,\*</sup> and Franz Winter <sup>7</sup>



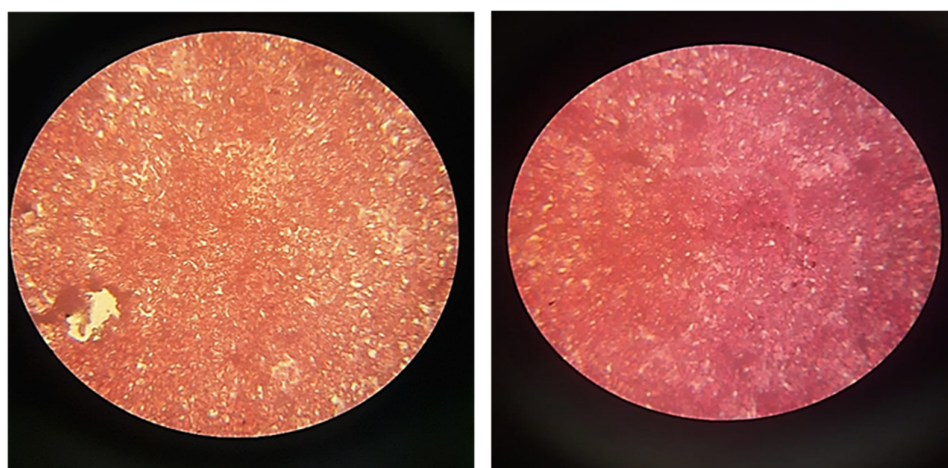
**Figure S1.** Different dilutions of (BIW).



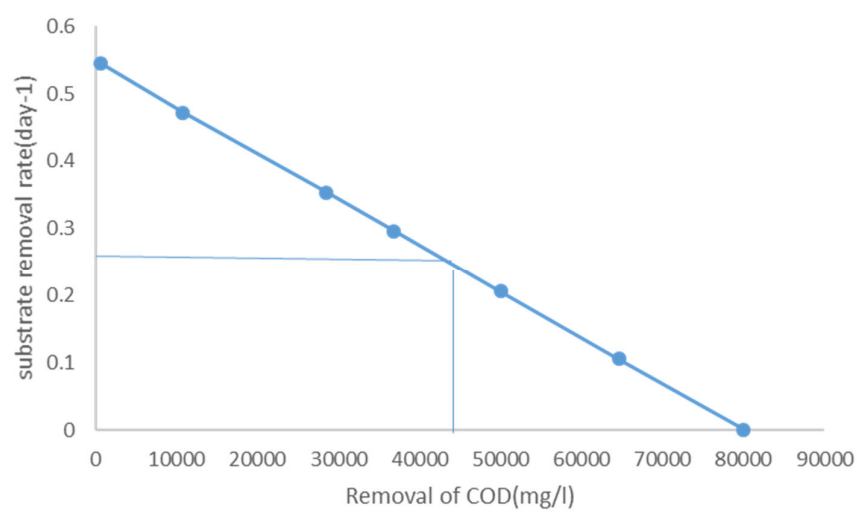
**Figure S2.** COD measuring apparatus by using open reflux method.



**Figure S3.** Measuring COD by titration method.



**Figure S4.** microscopic observation of Gram staining test.



**Figure S5.** the graph between substrate removal rate and removal of COD.