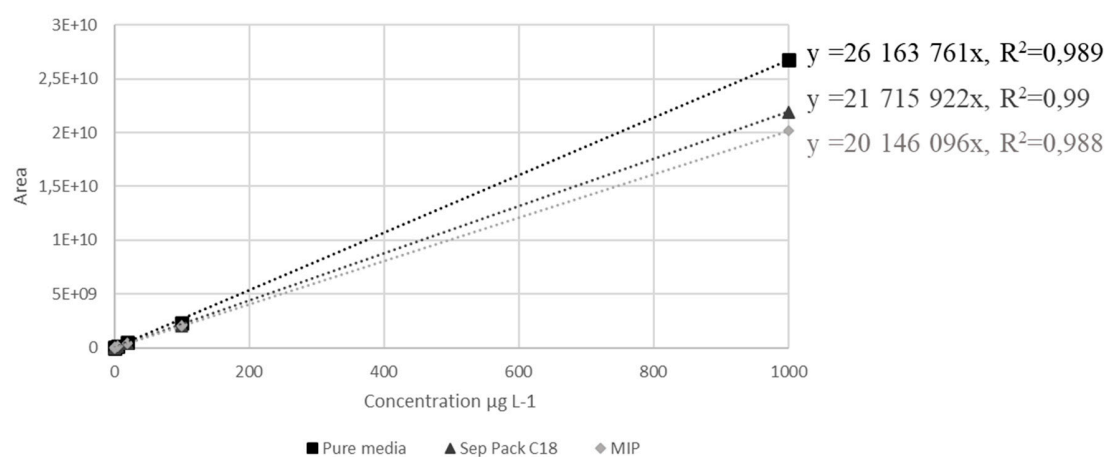


Supplementary material Figure S1 : Extraction profile obtained when percolated (a) CLD or (b) CLD-OH on the MIP/NIP 2 by applying the screening extraction procedure including the percolation (P) of 1 mL of ACN spiked with 200 $\mu\text{g L}^{-1}$ of each compounds, a first washing step (W1) with 1 mL of ACN, a second (W2) with 1 mL of ACN/MeOH, 90/10 (v/v), a third (W3) with 1 mL of ACN/MeOH, 80/20 (v/v), a fourth (W4) with 1 mL of ACN/MeOH, 70/30 (v/v) and a fifth (W5) with 1 mL of ACN/MeOH, 90/10 (v/v), finally compounds were eluted with 3 times 1 mL of MeOH (E1-E3).



Supplementary material Figure S2 : Calibration curves for CLD obtained for spiked pure water (square), spiked extract of serum's sample obtained after SPE on MIP (diamond) or on Sep Pack C18 (triangle).