

Figure S1. Molecular structure of Adenosine

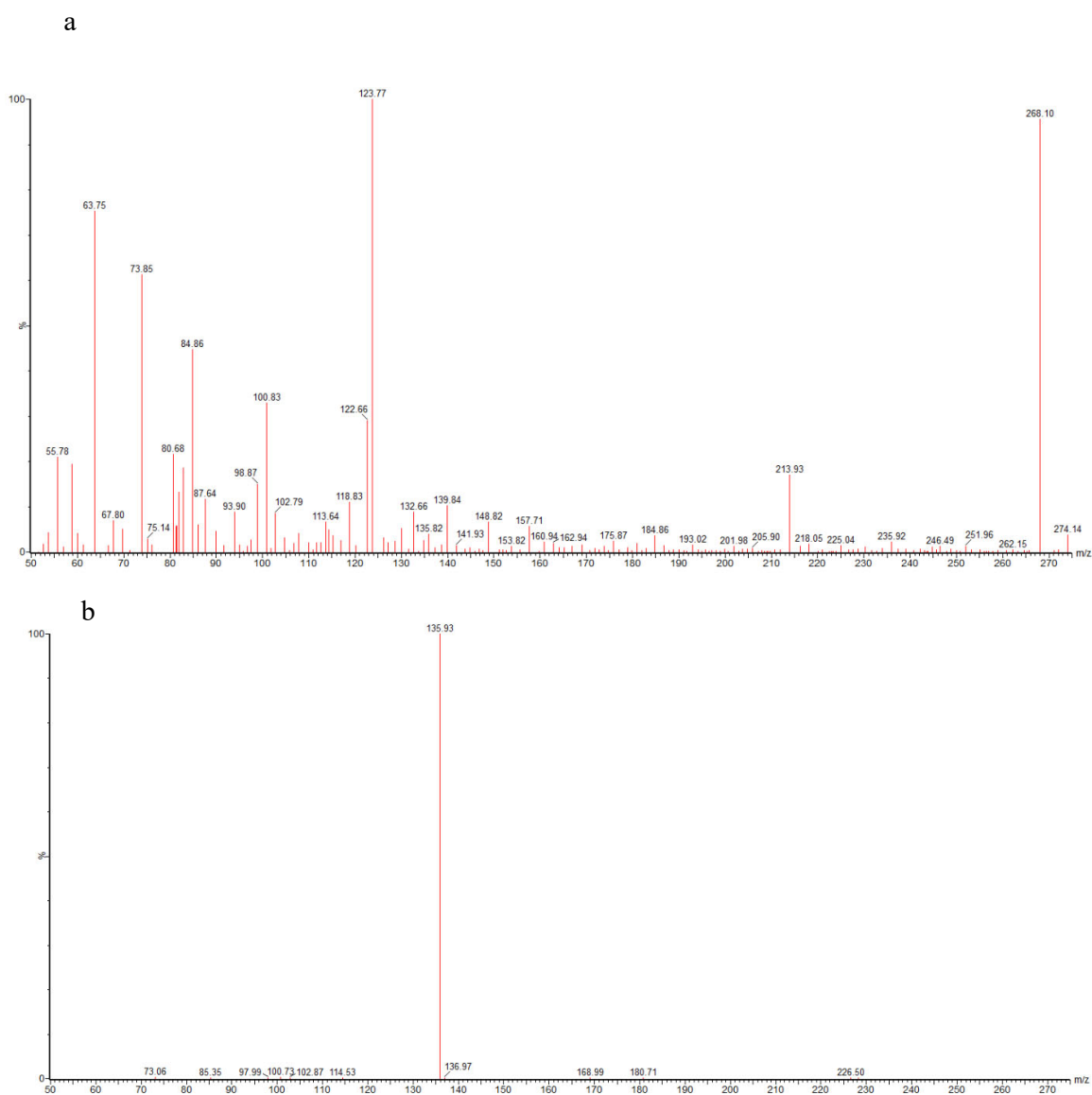


Figure S2. a. MS1 Scan of adenosine (10 $\mu\text{g/mL}$, cone energy 20V) and b. Daughter scan of adenosine (m/z 268, collision energy 15V)

TableS1. Calibration curve concentration range in μM

Standard Level	Standard Concentration
	μM
1	0.02
2	0.04
3	0.07
4	0.11
5	0.34
6	1.12
7	2.25
8	4.49
9	7.49