

SUPPLEMENTARY MATERIAL

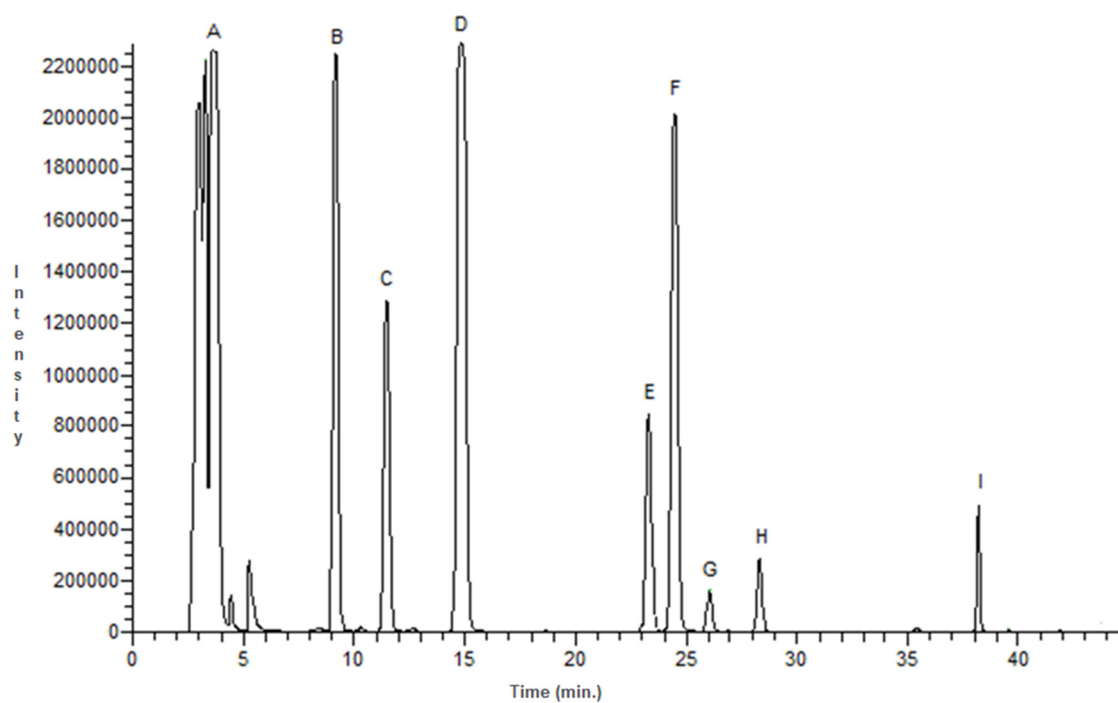


Figure S1. Chromatogram obtained at 254 nm in the analysis of a solution containing standards of the studied BAs (90 mg/L). A - DNS; B - Methylamine; C - Ethylamine; D - Dimethylamine; E - Phenylethylamine; F - Isopentylamine; G - Putrescine; H - Cadaverine; I - Tyramine.

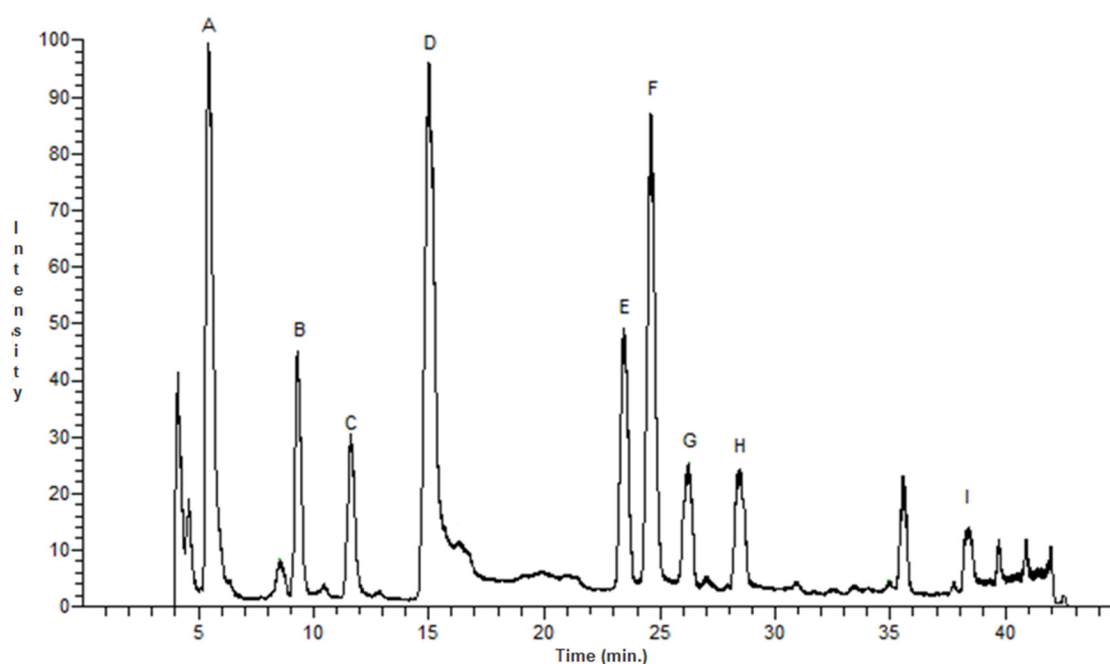


Figure S2. Chromatogram (TIC) obtained by HPLC-ESI/MS of the solution containing standards of BAs (90 mg/L). A - DNS; B - Methylamine; C - Ethylamine; D - Dimethylamine; E - Phenylethylamine; F - Isopentylamine; G - Putrescine; H - Cadaverine; I - Tyramine

Table S1. Equations of calibration curves, determination coefficients, linearity ranges, and limits of detection (LoD) and quantification (LoQ) of BAs

Biogenic Amine	Equation	Linearity Range (mg kg ⁻¹)	R ²	LoD (mg kg ⁻¹)	LoQ (mg kg ⁻¹)
Methylamine	$y=2.0139x+0.0187$	0.1 - 1	0.998	0.063	0.208
Phenylethylamine	$y=0.6055x+0.0058$	0.1 - 1	0.998	0.060	0.198
Isopentylamine	$y=1.5128x+0.0218$	0.1 - 1	0.999	0.026	0.086
Dimethylamine	$y=3.6799x+0.4640$	0.1 - 1	0.988	0.164	0.546
Putrescine	$y=0.1127x+0.2267$	1 - 200	0.999	0.534	6.475
Cadaverine	$y=0.1840x+1.5541$	0.1 - 400	0.996	0.822	2.740
Tyramine	$y=0.2536x+1.1478$	0.1 - 300	0.997	0.362	1.206