

## Electronic Supplementary Information

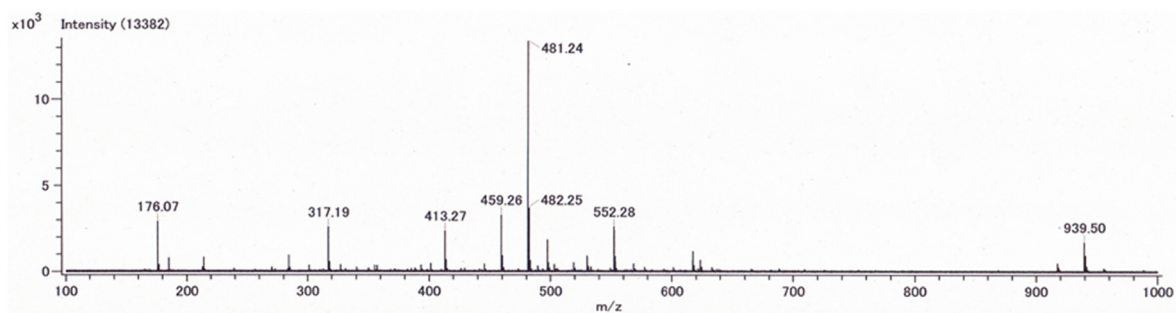
The effect of a peptide substrate containing an unnatural branched amino acid on  
chymotrypsin activity

**Yuuki Yamawaki, Tomoki Yufu, and Tamaki Kato \***

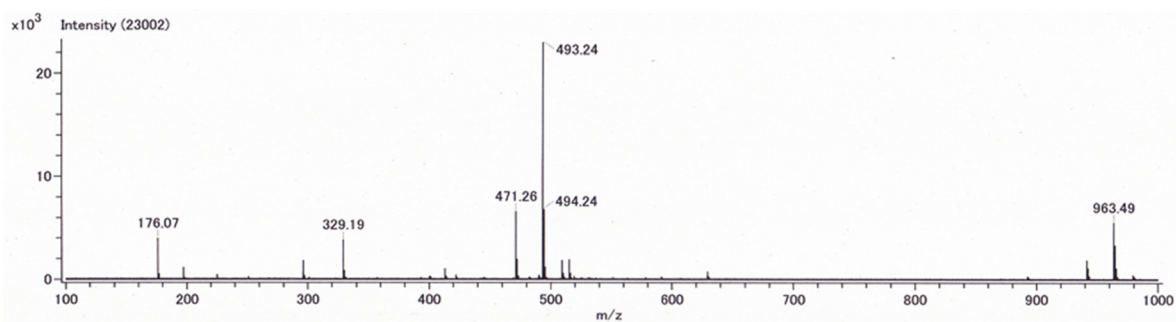
*Graduate School of Life Science and Systems Engineering, Kyushu Institute of Technology, 2-4 Hibikino,  
Wakamatsu-ku, Kitakyushu, Fukuoka 808-0196, Japan*

*E-mail: [tmkato@life.kyutech.ac.jp](mailto:tmkato@life.kyutech.ac.jp)*

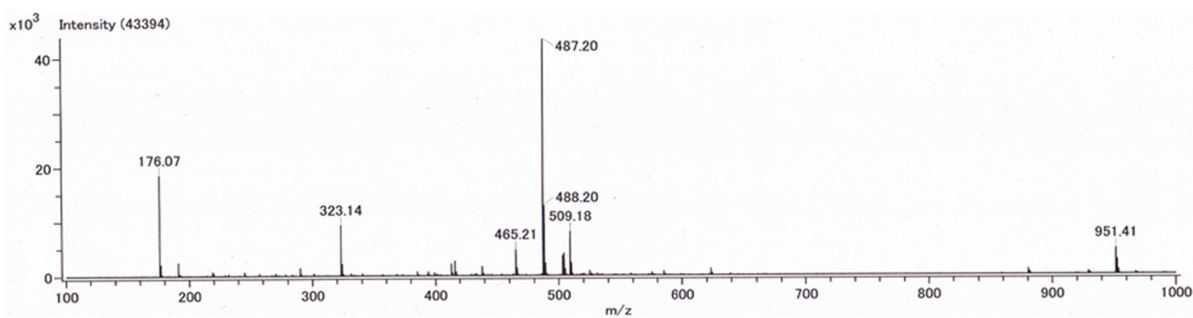
### AEH substrate 1



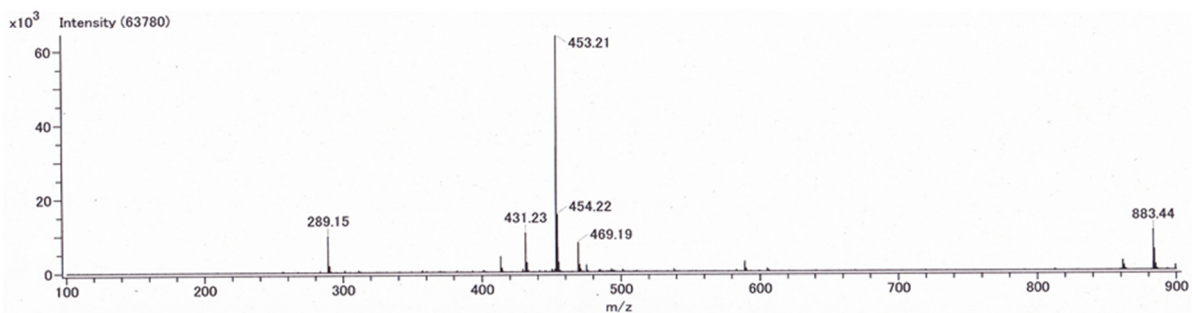
### Cha substrate 2



### Phe substrate 3



### Leu substrate 4



**Figure S1.** MS data of the four synthesized substrates  $\text{H}_2\text{N-Ala-Ala-XXX-AMC}$ , where XXX is either AEH **1**, Cha **2**, Phe **3**, or Leu **4**.