

Supplementary Figures

Inhibitory Effects of Thymol Isolated from *Curcuma longa* L. on Adipogenesis in HepG2 Cells

Dam-Hee Kang ^{1,†}, Young-Seob Lee ^{2,†}, Seon Min Oh ², Dahye Yoon ², Doo Jin Choi ², Dong-Yeul Kwon ¹, Ok-Hwa Kang ^{1,*} and Dae Young Lee ^{2,*}

¹ College of Pharmacy and Wonkwang-Oriental Medicines Research Institute, Institute of Biotechnology, Wonkwang University, Iksan 54538, Korea; fjrhuegru@hanmail.net (D.-H.K.); sssimi@wku.ac.kr (D.-Y.K.)

² Department of Herbal Crop Research, National Institute of Horticultural and Herbal Science, RDA, Eumseong 27709, Korea; youngseoble@korea.kr (Y.-S.L.); seonmin88@korea.kr (S.M.O.); dahyeyoon@korea.kr (D.Y.); cdj0105@korea.kr (D.J.C.)

* Correspondence: okey@wonkwang.ac.kr (O.-H. K.); dylee0809@gmail.com (D.Y.L.)

† These authors contributed equally to this work.

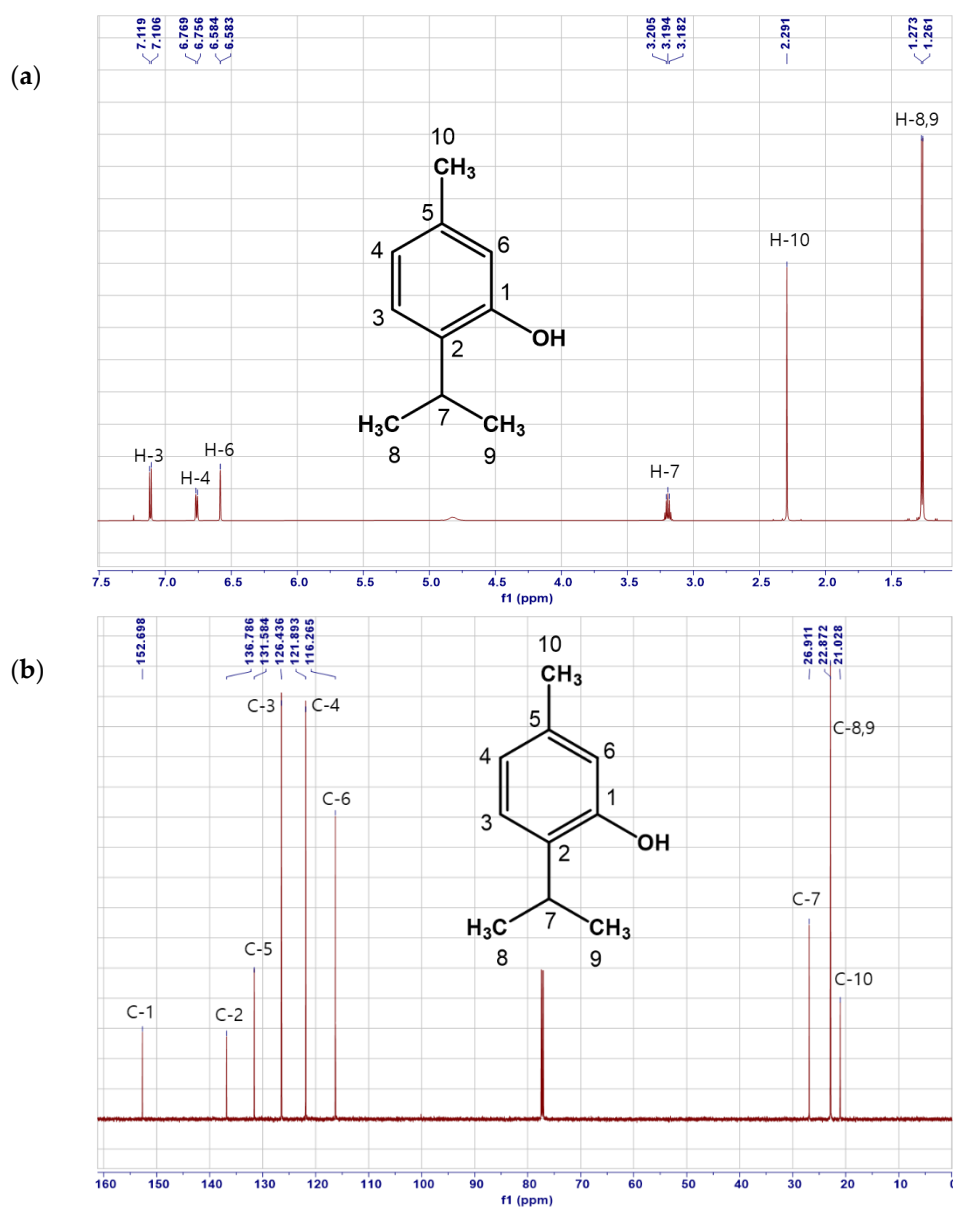
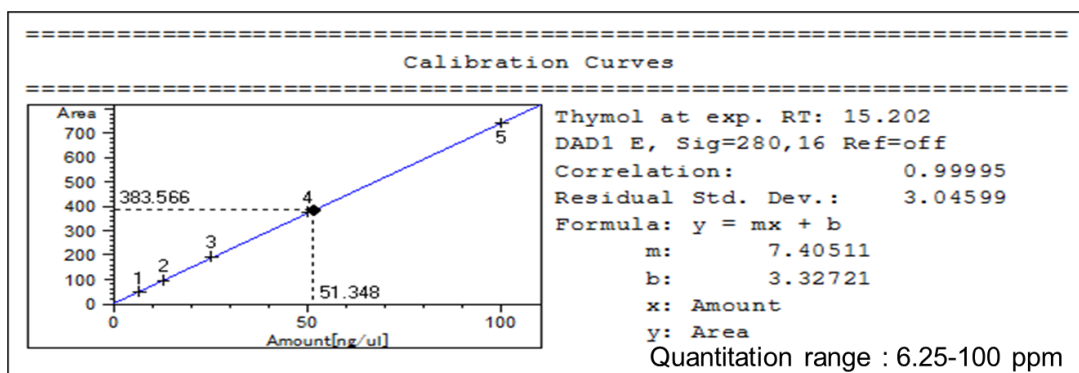


Figure S1. ¹H (a) and ¹³C (b) NMR data of thymol isolated from *Curcuma longa*.



| Lots # | Amount (ppm) | Amount (mg/g) | Amount (mg/g) | |
|--------|--------------|---------------|---------------|--------|
| Lots 1 | 51.3482 | 10.2696 | average | 10.679 |
| Lots 2 | 55.7764 | 11.1553 | stdev | 0.4467 |
| Lots 3 | 53.0555 | 10.6111 | RSD | 4.1828 |

Figure S2. Quantification and calibration curve of thymol isolated from *Curcuma longa*.