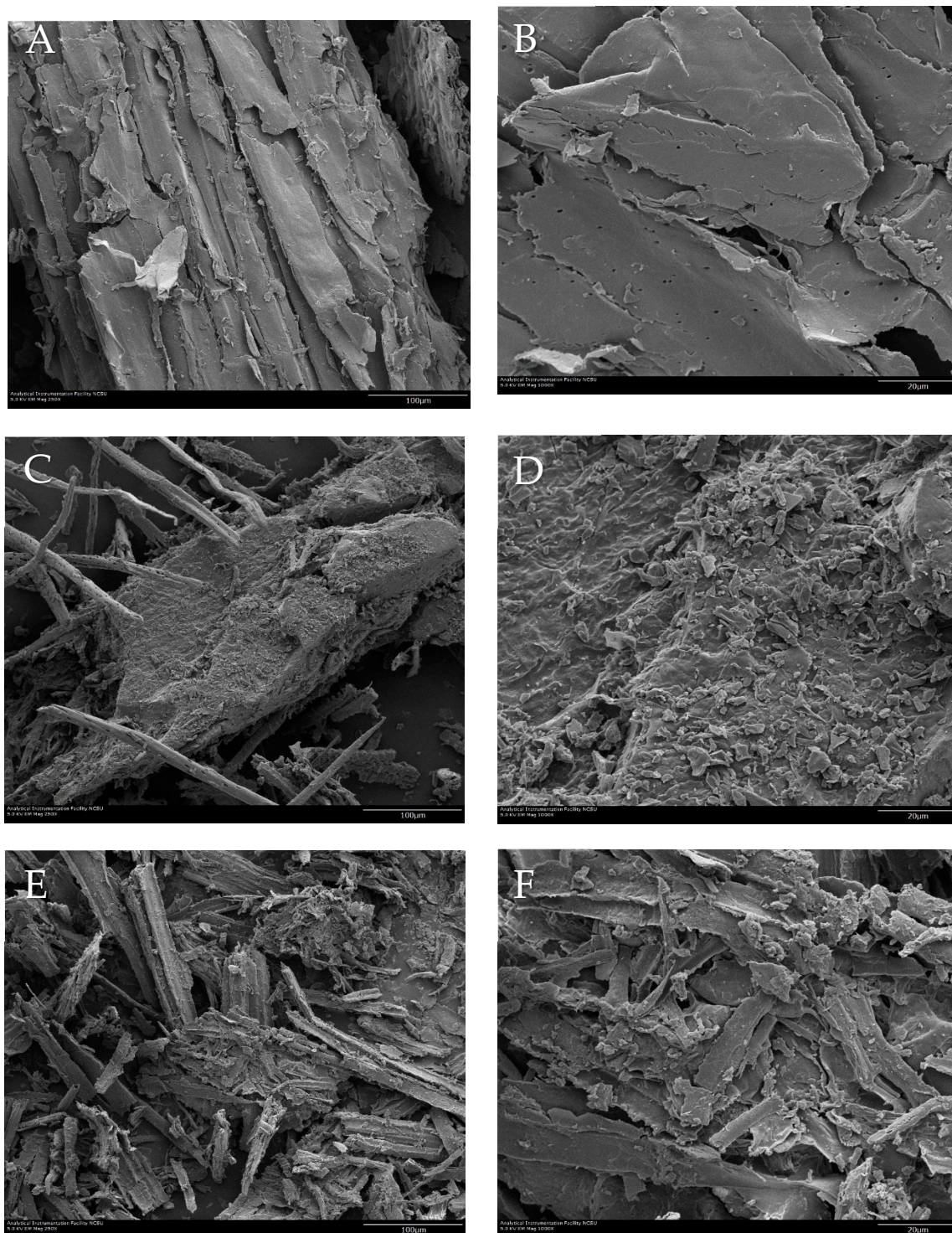


## Supplementary Materials



**Figure S1.** SEM images of untreated miscanthus (A and B, magnification 250× and 1000×), lignin isolated from miscanthus pretreated by 1% NaOH at 121 °C for 30 min (C and D, magnification 250× and 1000×), and lignin isolated from miscanthus pretreated by 2% H<sub>2</sub>SO<sub>4</sub> at 121°C for 60 min (E and F, magnification 250× and 1000×).