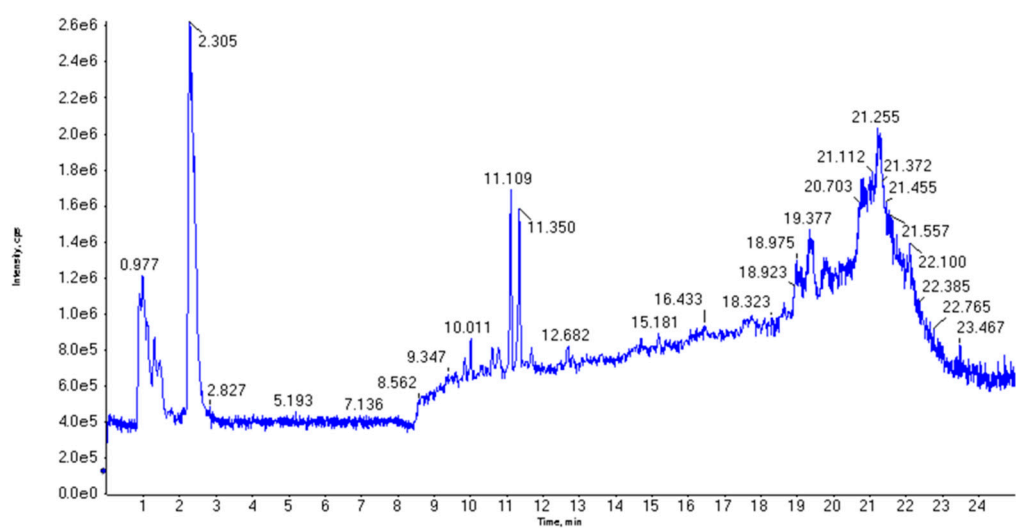
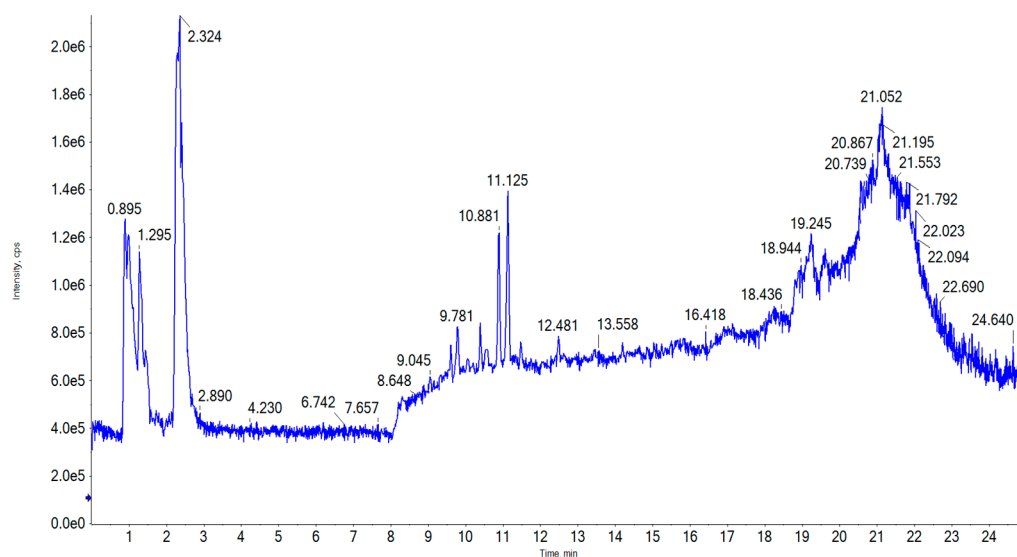


Supplementary Material

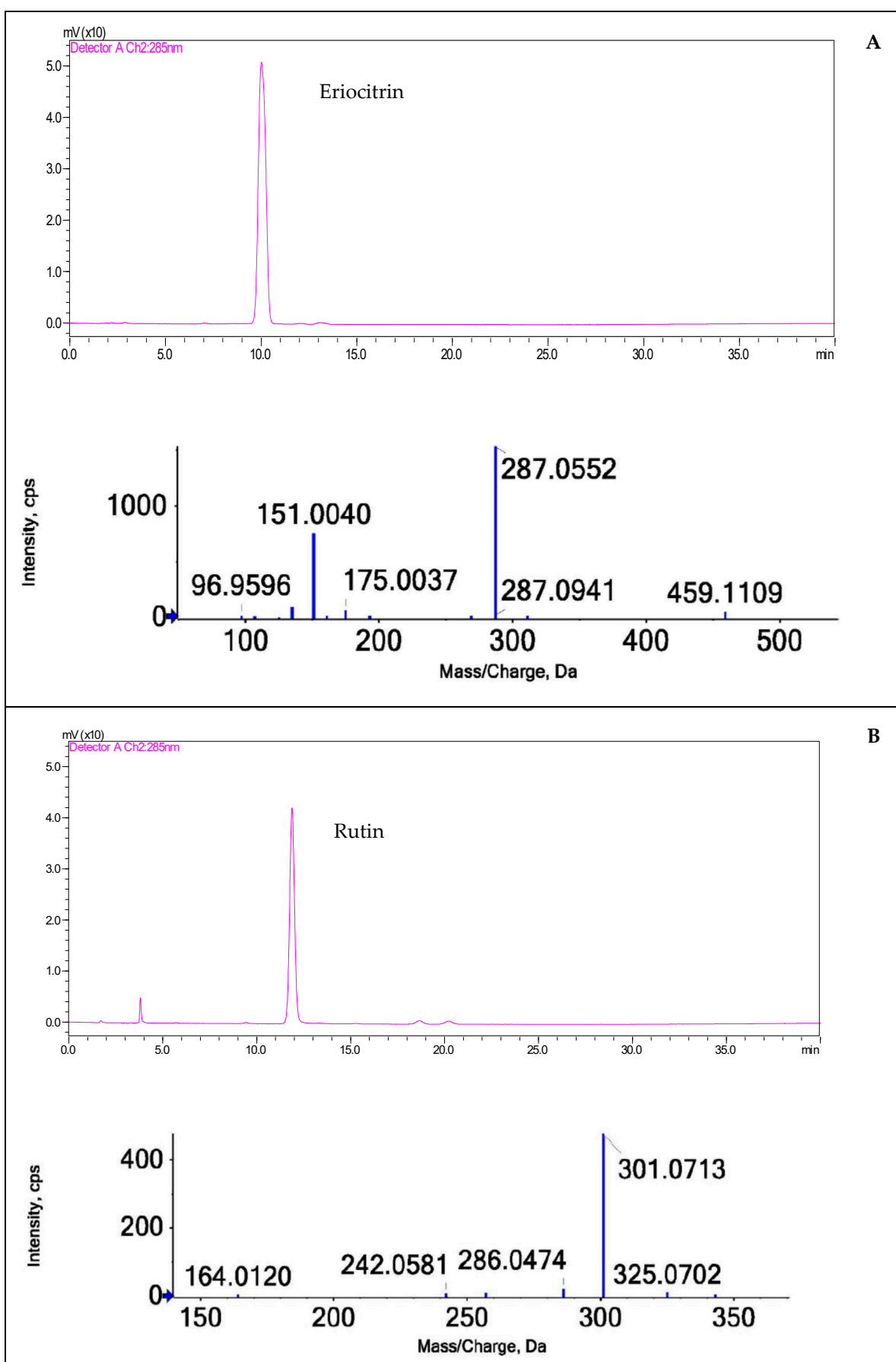


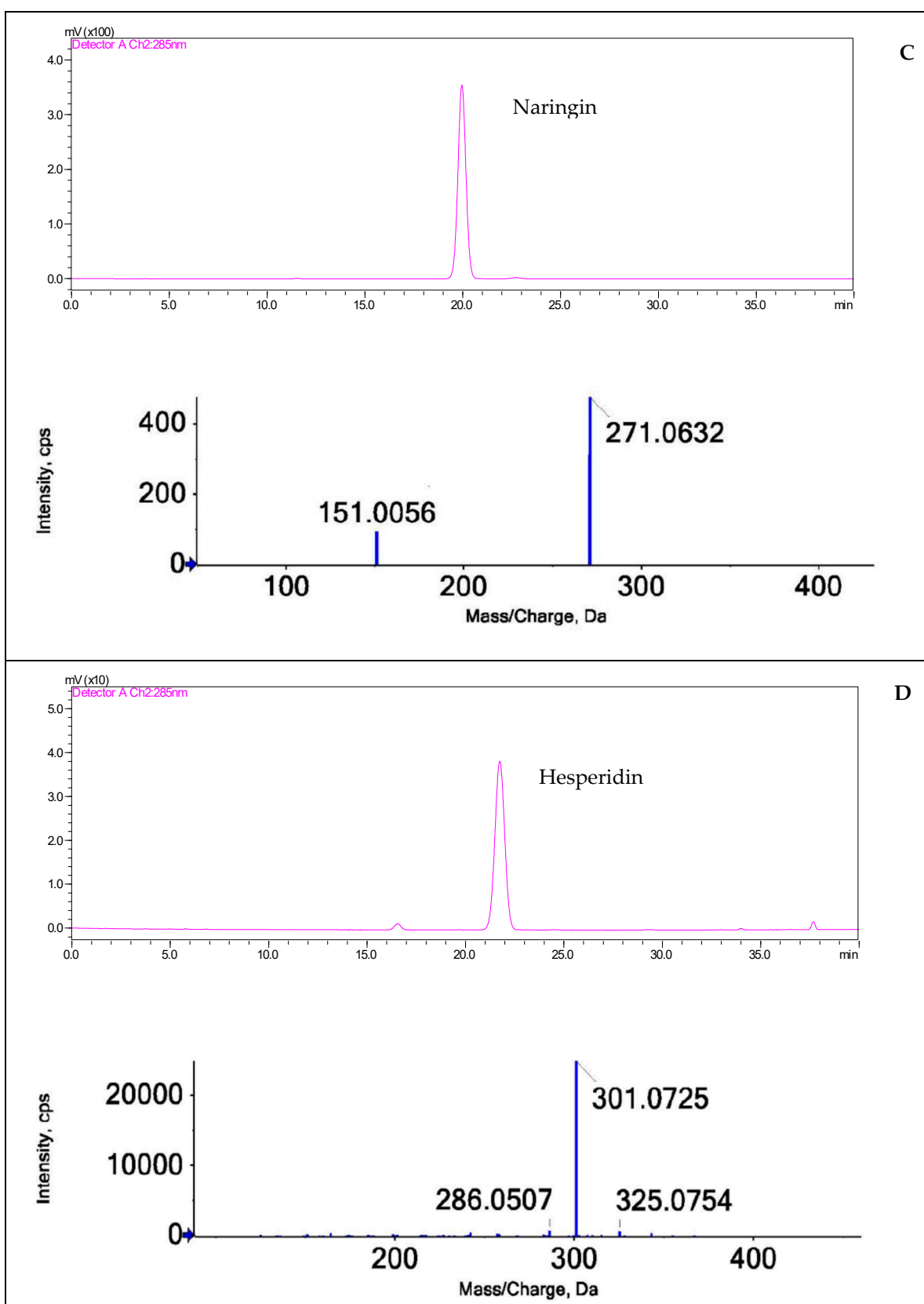
A



B

Figure S1. Chromatograms of *C. latifolia* (A) and *C. limonia* (B) juices acquired from quantitative analysis by LC-QTOF MS/MS.





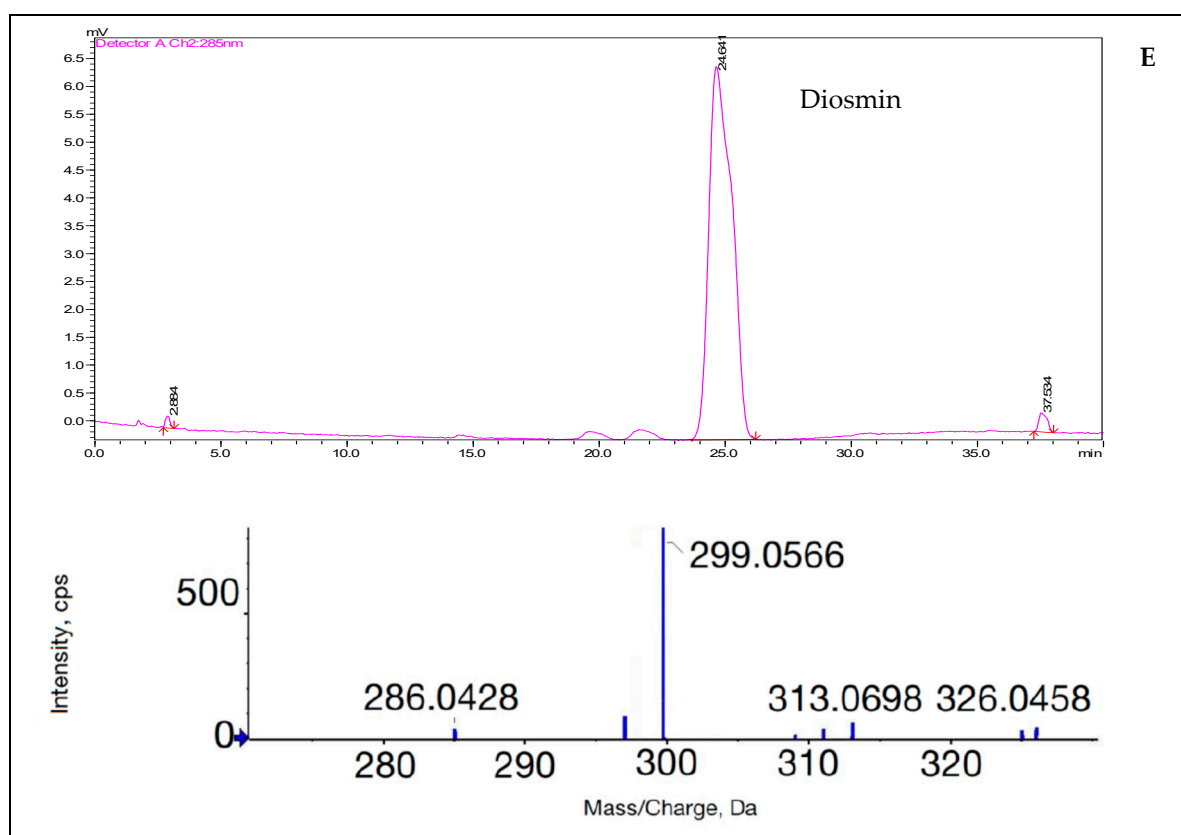
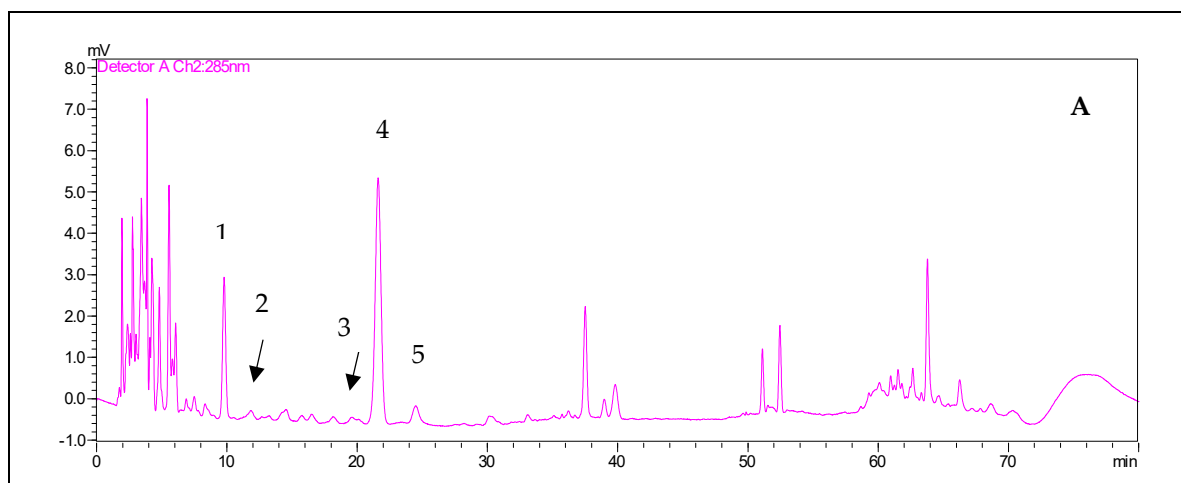


Figure S2. Chromatograms and MS spectra of standards: eriocitrin (A), rutin (B), naringin (C), hesperidin (D) and diosmin (E).



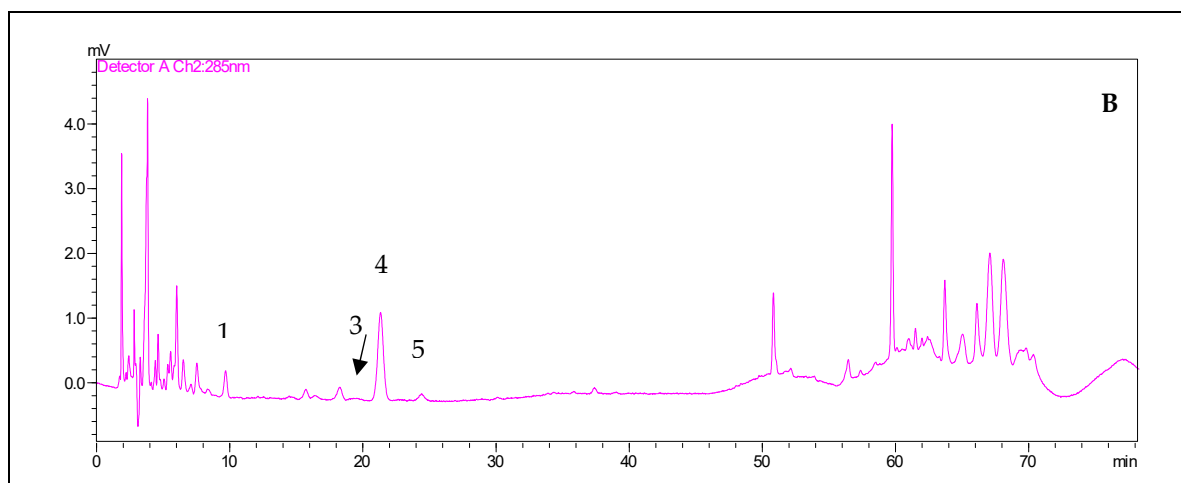


Figure S3. HPLC-PDA chromatograms of *C. latifolia* (A) and *C. limonia* (B) juices at 280 nm. Elution of compounds are marked 1. eriocitrin, 2. rutin, 3. naringin, 4. Hesperidin, and 5. diosmin. Note with absence of rutin in *C. limonia* juice.