

Supplementary materials

Table S1. PCPC score

Clinical Features	Category	Score
Normal at age-appropriate level School age child attends regular school classroom	normal	1
Conscious alert and able to interact at an age-appropriate level School age child attending regular school classroom but grade perhaps not appropriate for age May have a mild neurologic deficit	mild disability	2
Conscious Sufficient cerebral function for age-appropriate independent activities of daily life School age child attending special education classroom May have learning deficit	moderate disability	3
Conscious Dependent on others for daily support because of impaired brain function	severe disability	4
Any degree of coma without any of the criteria for brain death Unawareness even if awake in appearance without interaction with the environment cerebral unresponsiveness No evidence of cortical function and not aroused by verbal stimuli Possibly some reflexive responses spontaneous eye opening and/or sleep-wake cycles	coma or vegetative state	5
Apnea OR Areflexia OR Electroencephalographic (EEG) silence	brain death	6



Figure S1. Example of seizure on aEEG trace.

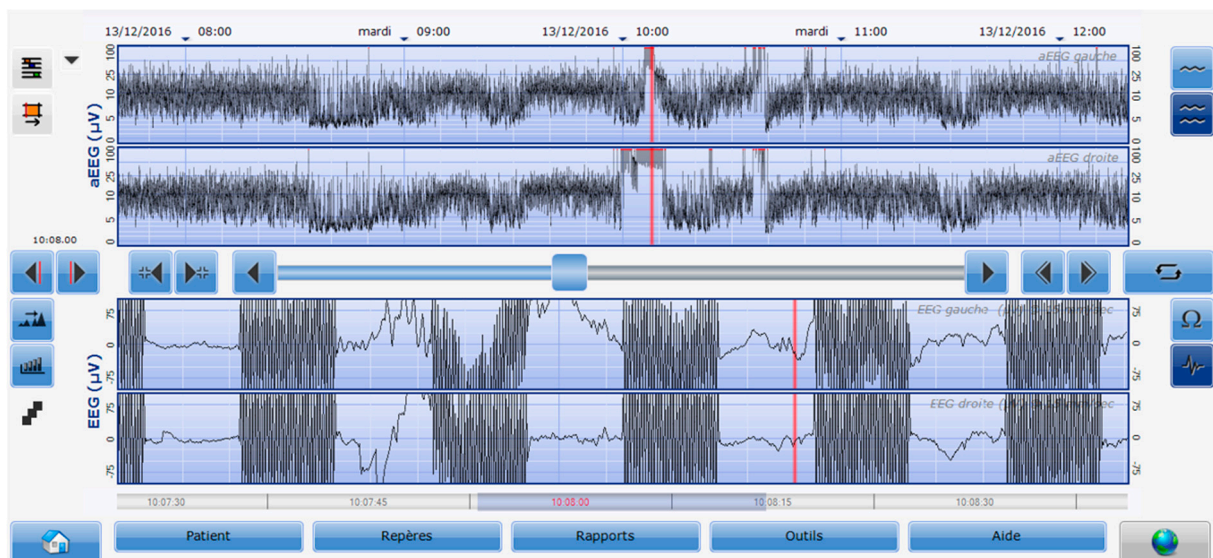


Figure S2. Example of a ventilation artifact.