

Figure S1. Full-length images of Ponceau S staining and antibody detections of replicates for PGC1, p-PPAR $\alpha$  and SIRT3.

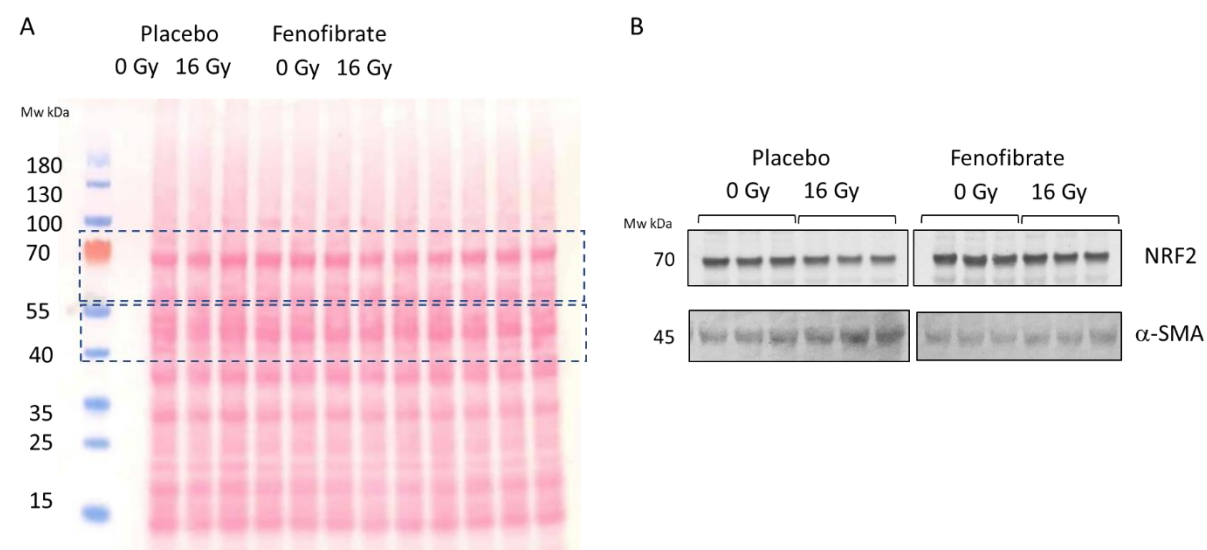


Figure S2. Full-length images of Ponceau S staining and antibody detections of replicates for NRF2 and  $\alpha$ -SMA.

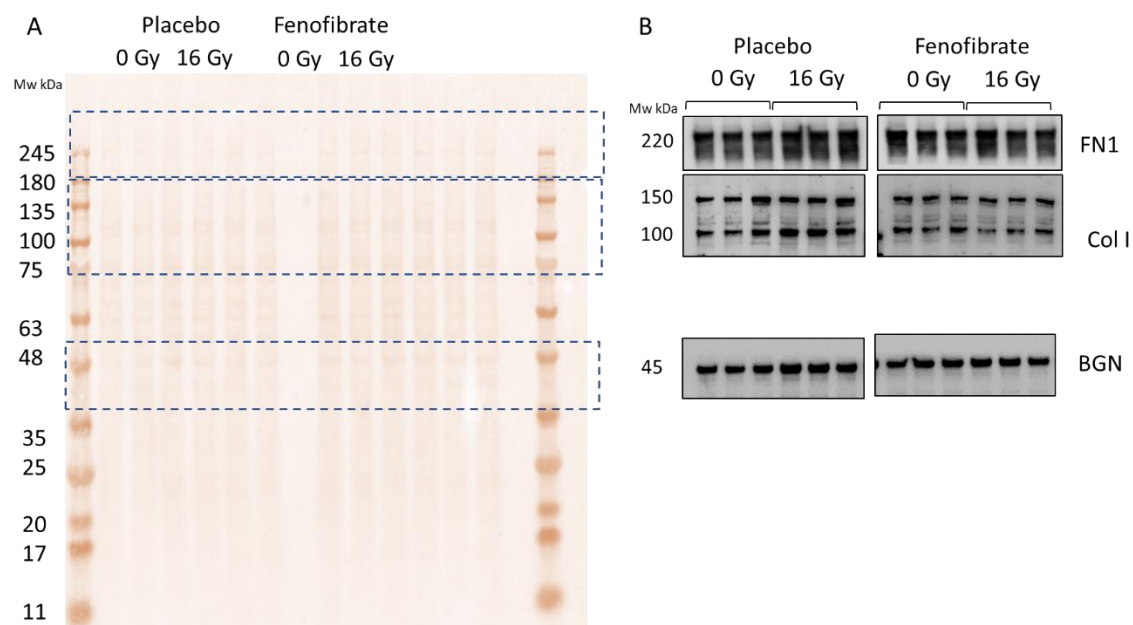


Figure S3. Full-length images of Ponceau S staining and antibody detections of replicates for FN1, Col I and BGN.

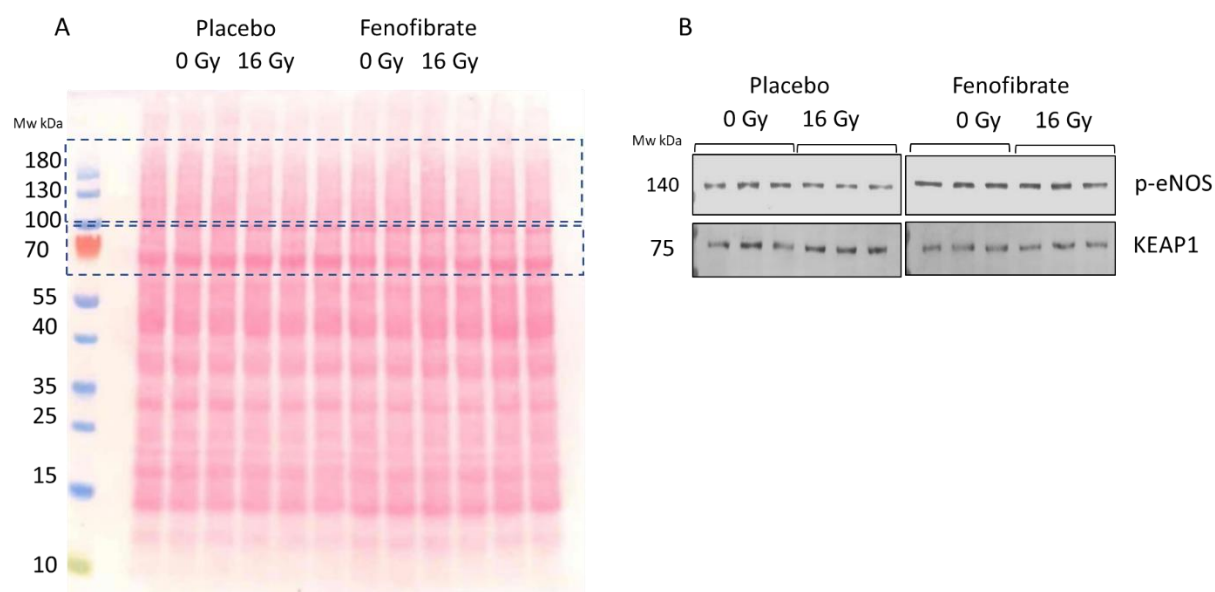


Figure S4. Full-length images of Ponceau S staining and antibody detections of replicates for p-eNOS and KEAP1.

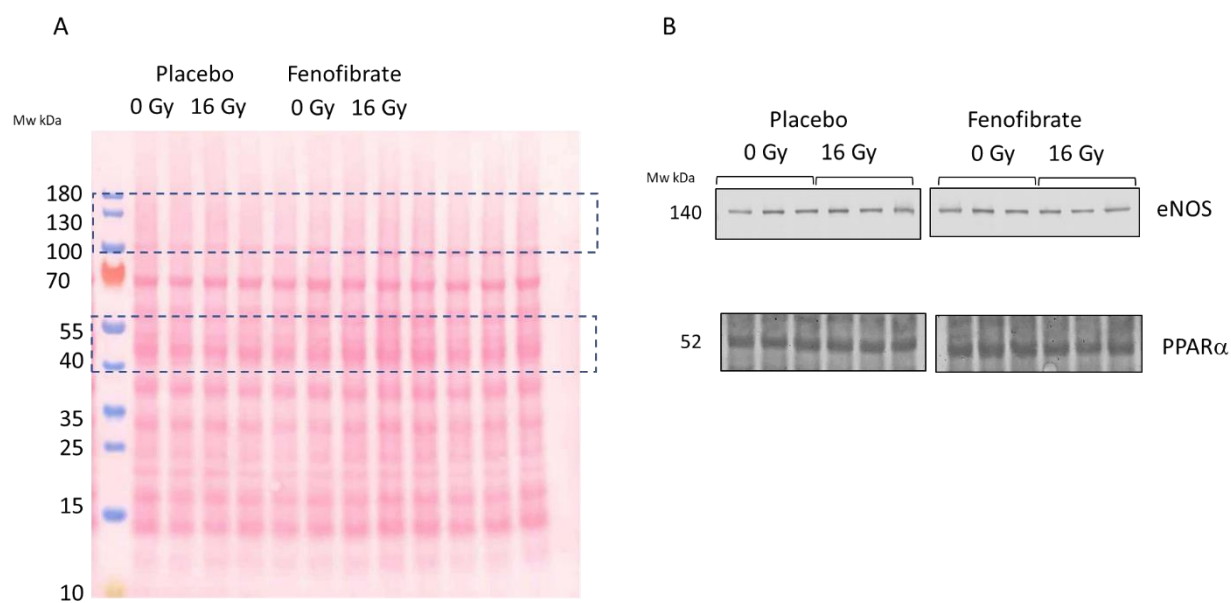


Figure S5. Full-length images of Ponceau S staining and antibody detections of replicates for PPAR $\alpha$  and eNOS