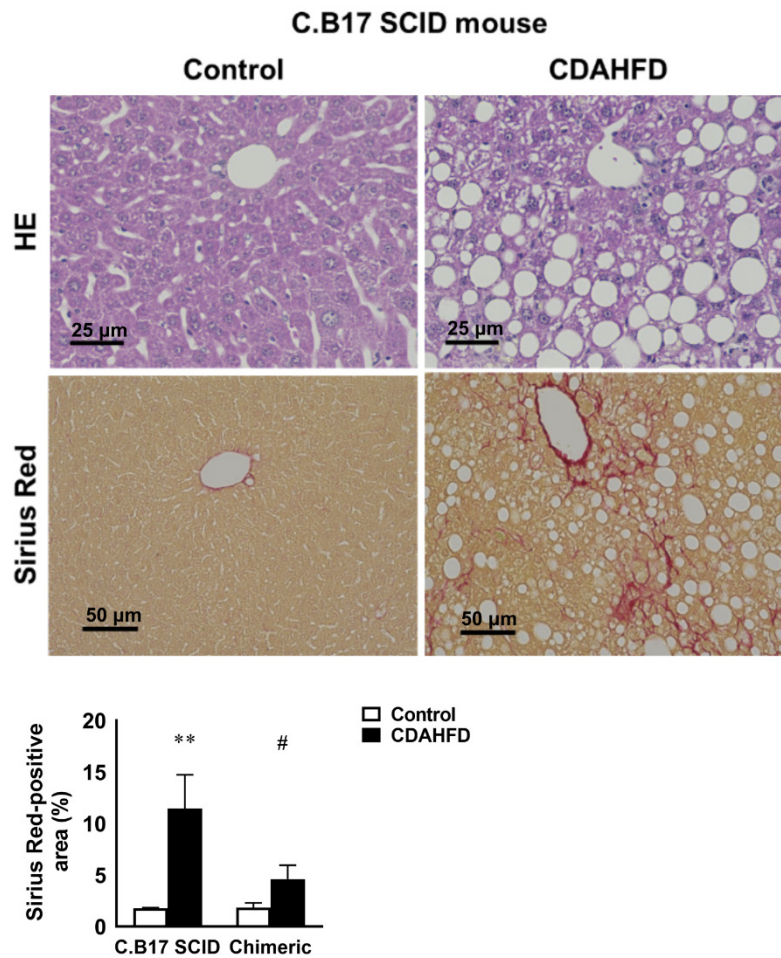


Supplementary Figure S2



Supplementary Figure S2 Histological changes in C.B17 SCID mice at 14 weeks after CDAHFD feeding. Representative images of H&E staining (upper panel) and Sirius Red staining (lower panel) in the livers of standard diet or CDAHFD fed C.B17 SCID mouse (n = 4 per group). Scale bar: 25 μ m (upper panel) or 50 μ m (lower panel). The ratio of the Sirius Red-positive area in the livers of control or CDAHFD fed mice at 14 weeks. The open and closed bars show the control and CDAHFD-fed mice, respectively (n=4 per group). **Significant difference from the control group ($p < 0.01$). #Significant difference from the C.B17 SCID mice fed CDAHFD ($p < 0.05$).