

Figure S1

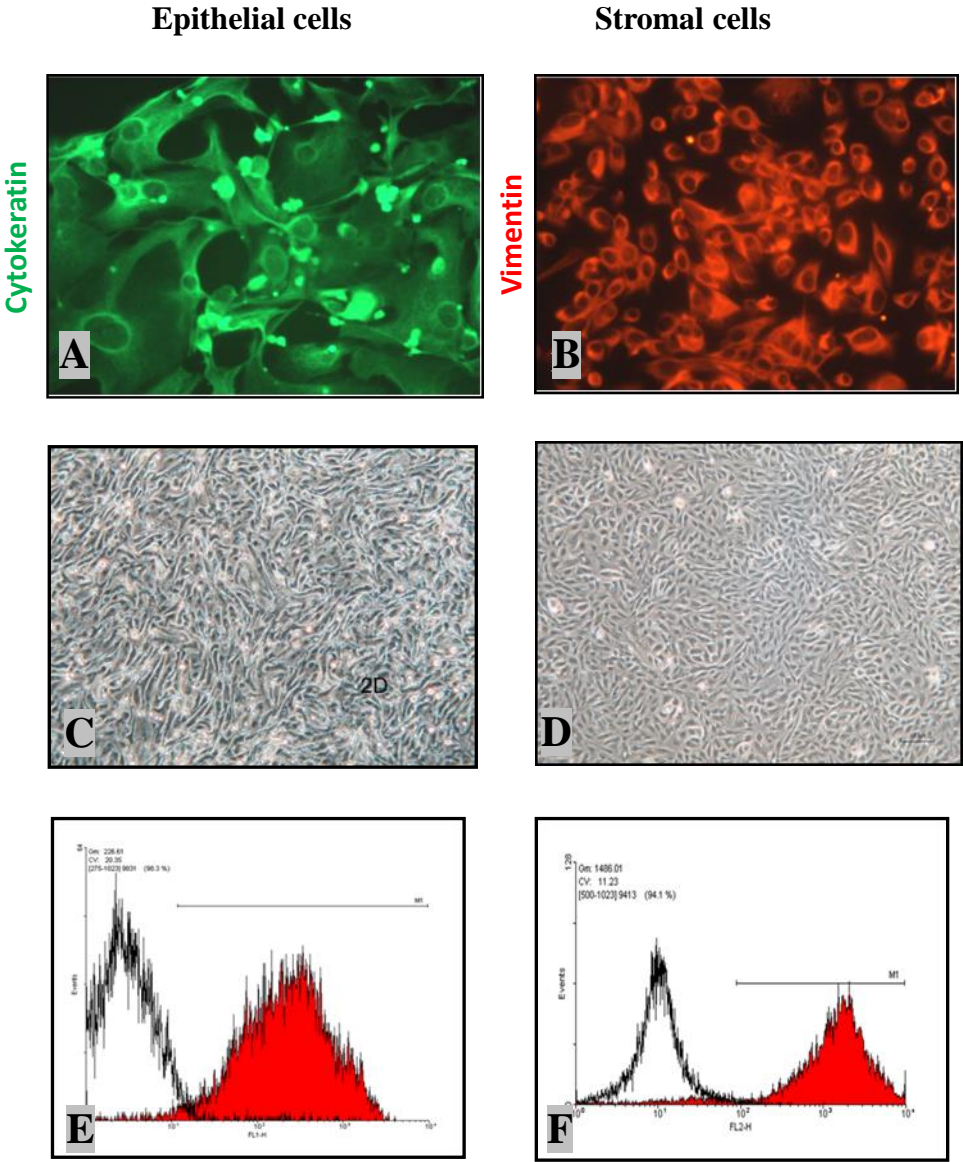


Figure S2

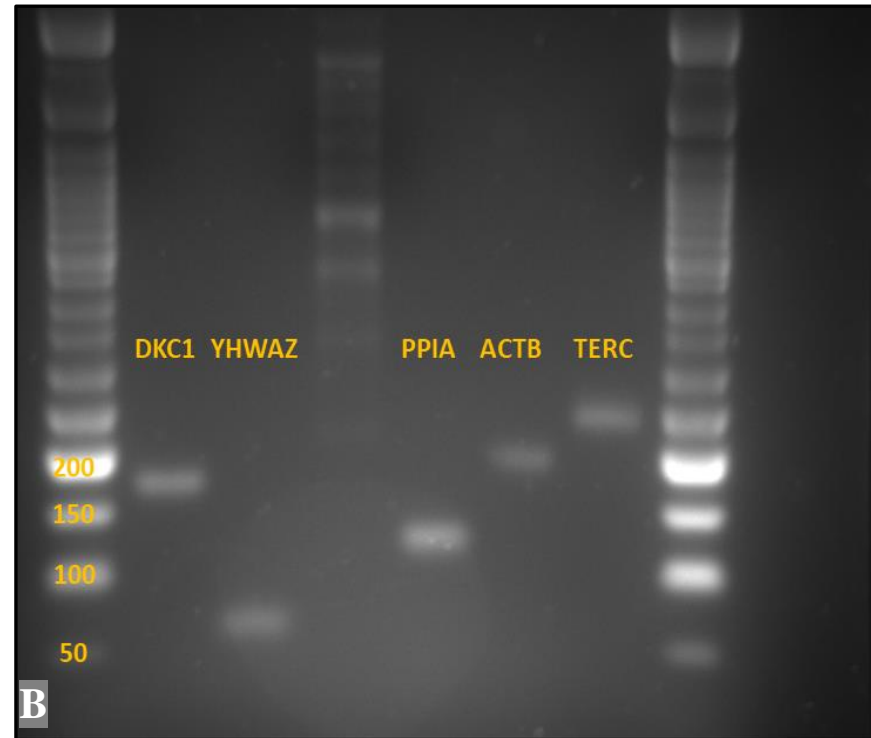
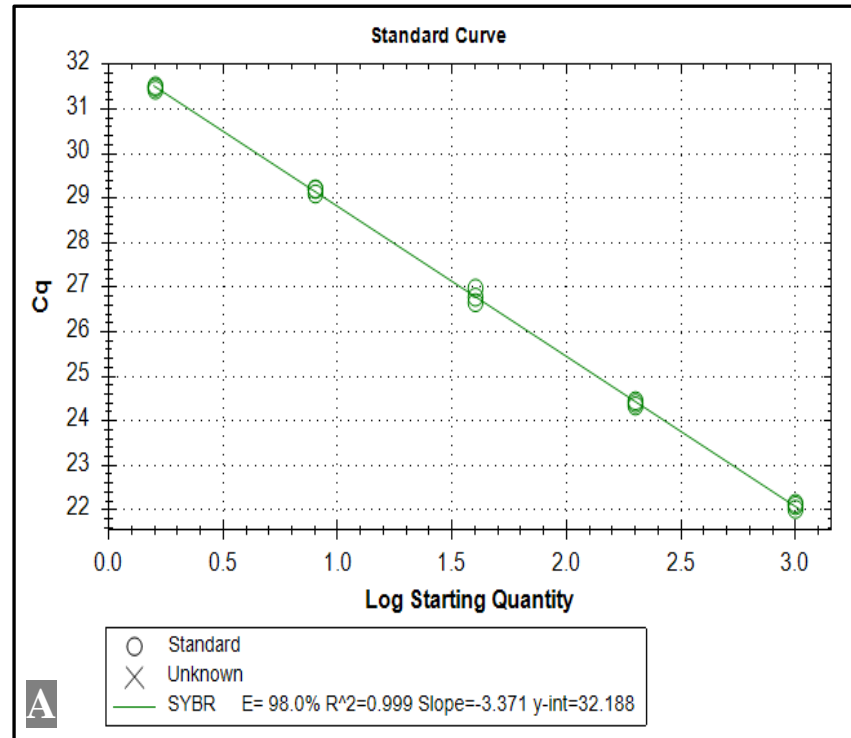


Figure S1 Isolated endometrial cell characterisation. Endometrial Biopsies were mechanically and enzymatically digested and purified using Epcam microbeads.

Epcam positive cells represent epithelial cells; Epcam negative cells are stromal cells. Purity of cultures was assessed by performing immunoblotting [4] and immunofluorescence for **A)** Cytokeratin and **B)** Vimentin. Purity of cultured cells also assessed morphologically by maintaining **C)** primary human epithelial and **B)** stromal cells in monolayer culture (2D), and by performing flow cytometry using **E)** Fluorescein conjugated antihuman CD9 and **F)** Phycoerythrin (PE) anti-human CD13. Representative histograms with red area representing labelled cells.

Figure S2 RT-qPCR primers efficiency and specificity **A)** DKC1 standard curve showing assay efficiency, precision and slope. Log starting quantity (nanogram). **B)** Image of agarose gel electrophoresis showing specific bands for DKC1, YHWAZ, PPIA, ACTB and hTERT.