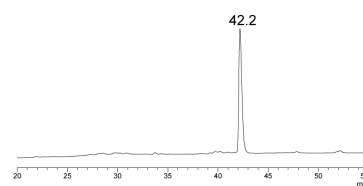
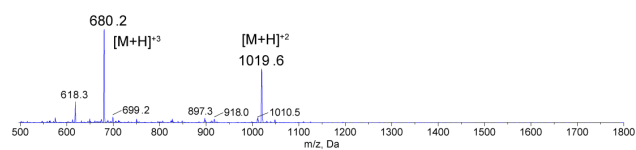
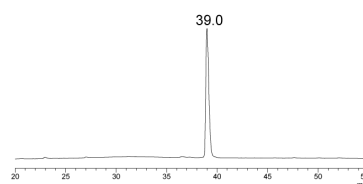
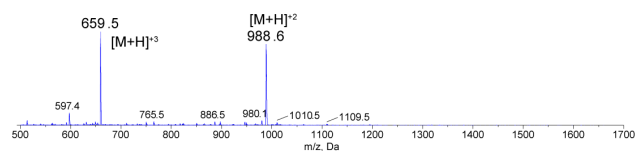


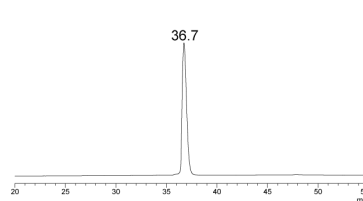
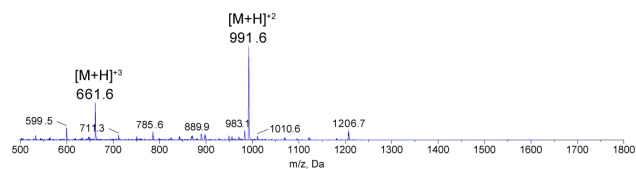
Ac-R3 B10-27 13,17 Aib (1)



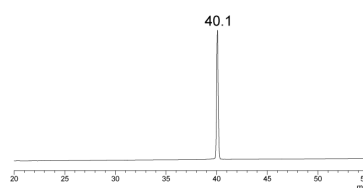
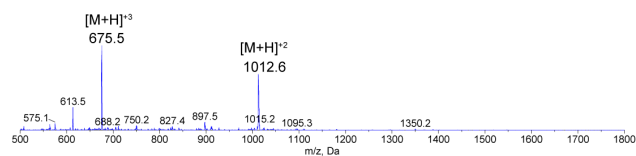
Ac-R3 B10-27 13,14,17 Aib (2)



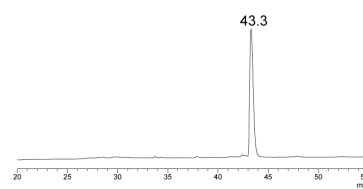
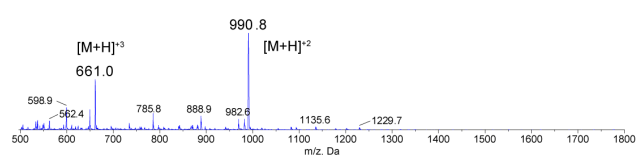
R3 B10-27 13,17,18 Aib (3)



Ac-R3 B10-27 13,17,18 Aib (4)



R3 B10-27 13,17,21 Aib (5)



Ac-R3 B10-27 13,17,21 Aib (6)

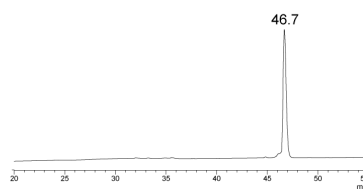
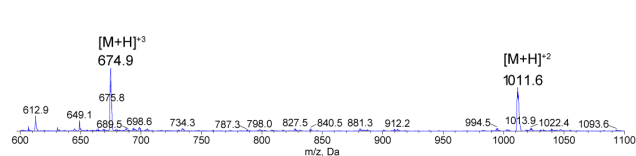
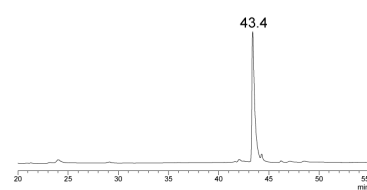
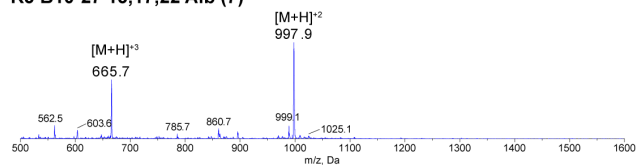
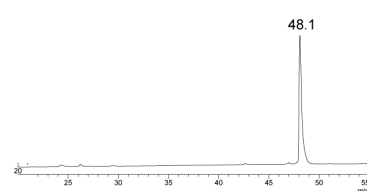
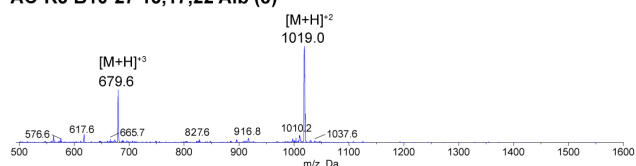


Figure S1. Mass spectra of analogues 1 – 6 and their corresponding peak retention time in analytical HPLC.

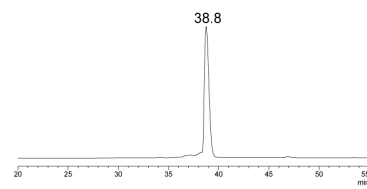
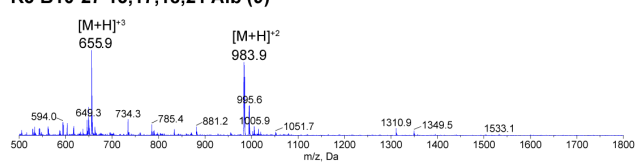
R3 B10-27 13,17,22 Aib (7)



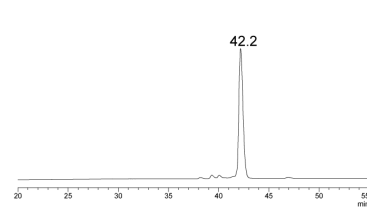
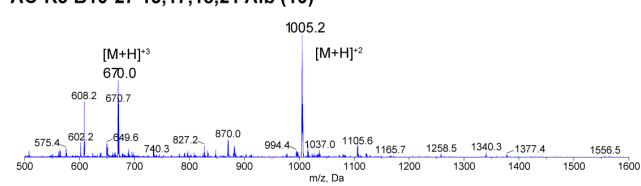
AC-R3 B10-27 13,17,22 Aib (8)



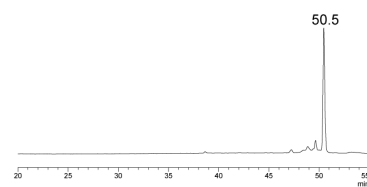
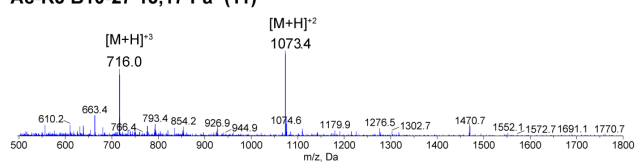
R3 B10-27 13,17,18,21 Aib (9)



AC-R3 B10-27 13,17,18,21 Aib (10)



Ac-R3 B10-27 13,17 Pa^a (11)



4K-R3 B10-27 13,17 Pa^b (12)

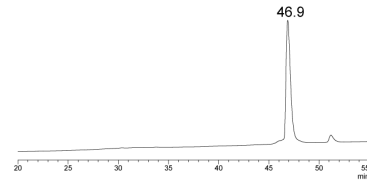
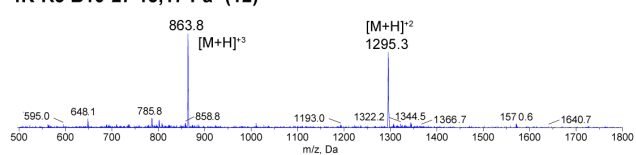
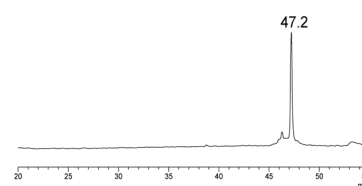
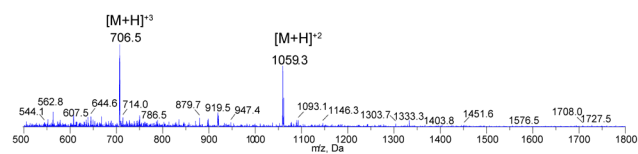
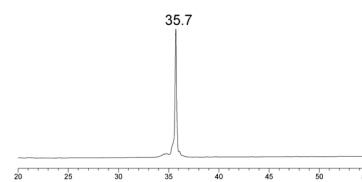
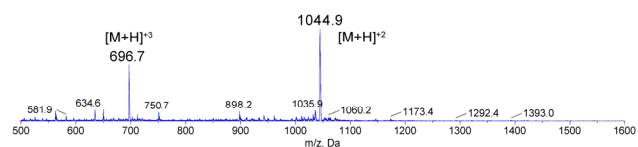


Figure S2. Mass spectra of analogues 7 – 12 and their corresponding peak retention time in analytical HPLC.

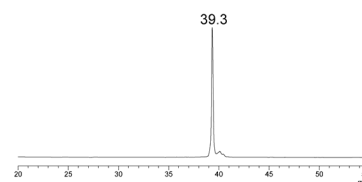
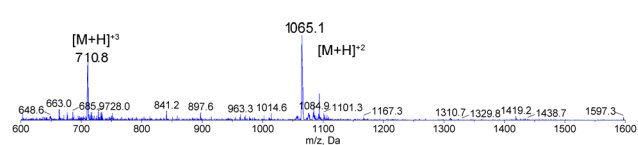
Ac-R3 B10-27 13,17 Pg^a (13)



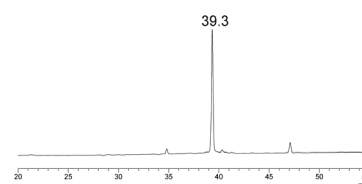
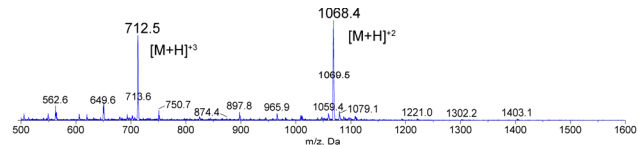
R3 B10-27 13,17 DCA^b (14)



AC-R3 B10-27 13,17 DCA^b (15)



R3 B10-27 13,17 DBx^b (16)



AC-R3 B10-27 13,17 DBx^b (17)

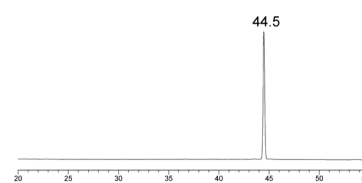
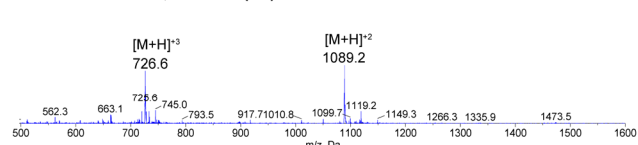


Figure S3. Mass spectra of analogues 13 – 17 and their corresponding peak retention time in analytical HPLC.