

Supplementary data

Galactomannan pentasaccharide produced from copra meal enhances tight junction integration of epithelial tissue through activation of AMPK

Chatchai Nopvichai ¹, Pawin Pongkorpsakol ², Preedajit Wongkrasant ², Karan Wangpaiboon ¹,
Thanapon Charoenwongpaiboon¹, Kazuo Ito ³, Chatchai Muanprasat ², Rath Pichyangkura^{1*}

¹ Department of Biochemistry, Faculty of Science, Chulalongkorn University, Thailand.

² Department of Physiology, Faculty of Science, Mahidol University, Thailand

³ Graduate school of science, Osaka city university, Japan

* Correspondence: prath@chula.ac.th

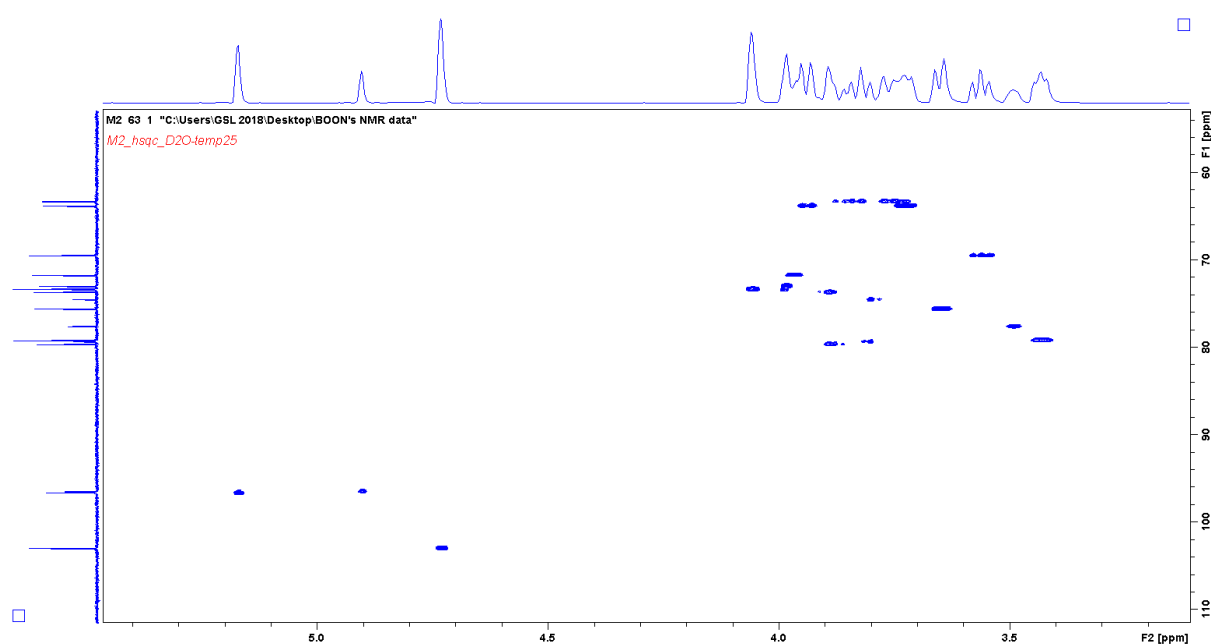


Fig.S1 HSQC spectrum of m-2.

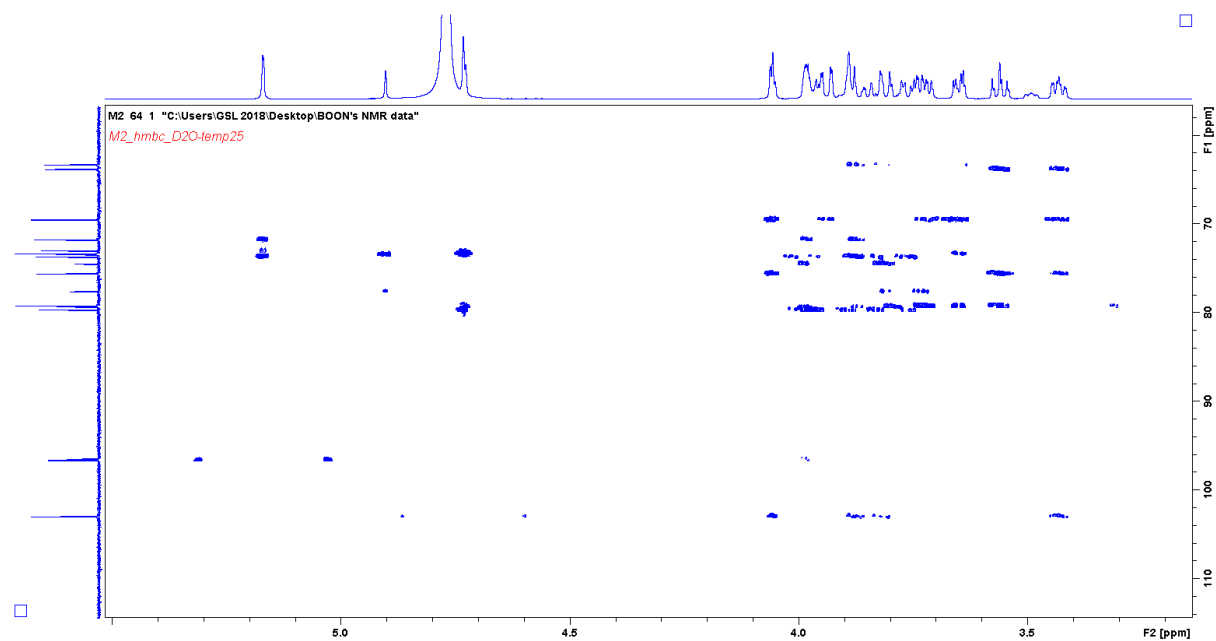


Fig.S2 HMBC spectrum of m-2.

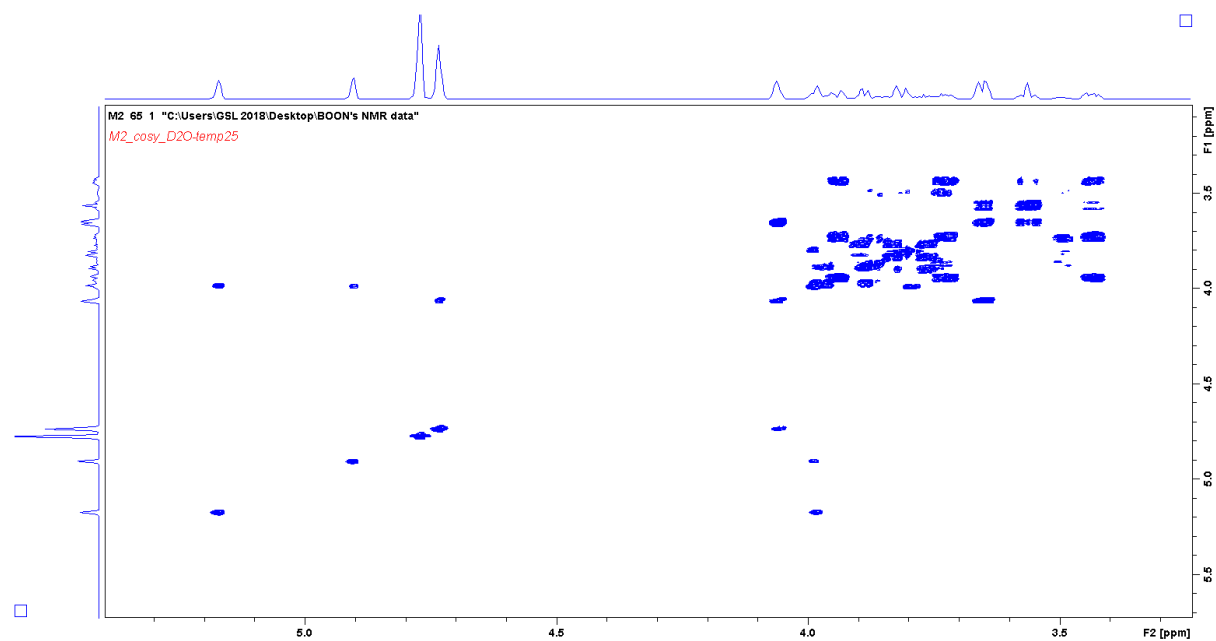


Fig.S3 COSY spectrum of m-2.

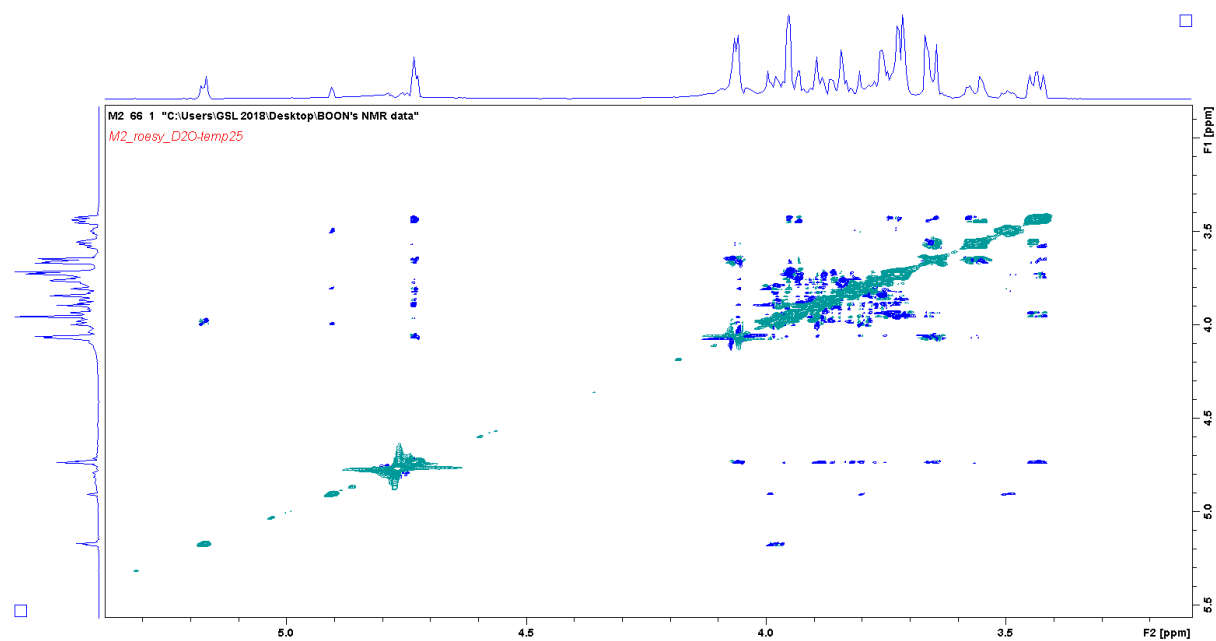


Fig.S4 ROESY spectrum of m-2.

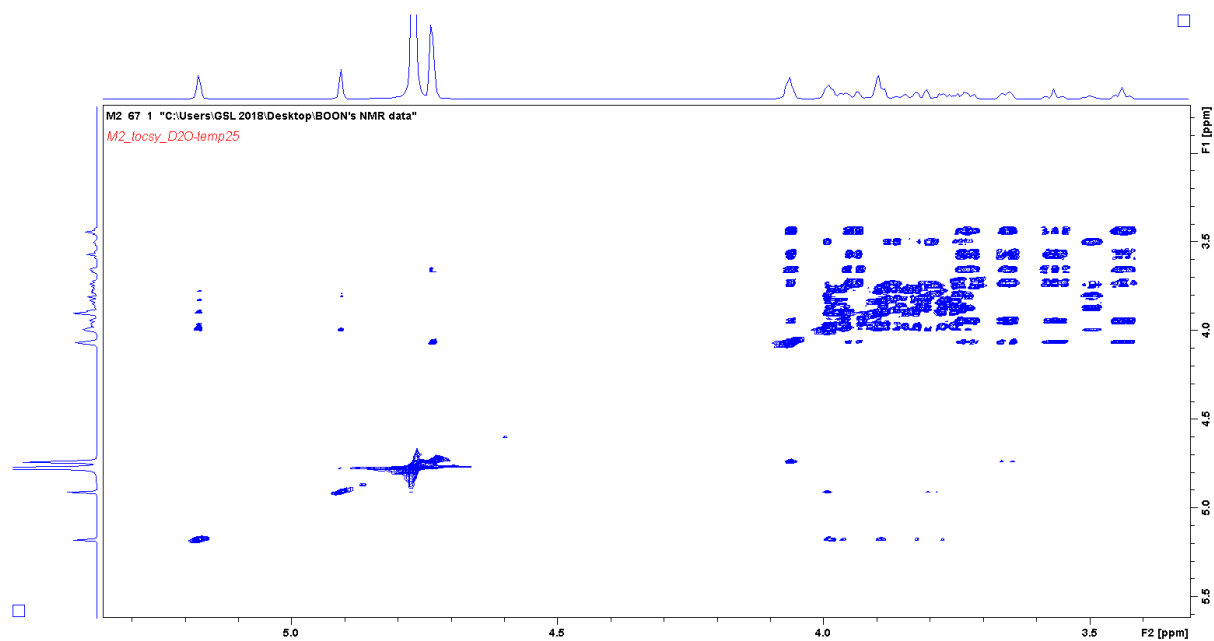


Fig.S5 TOCSY spectrum of m-2.

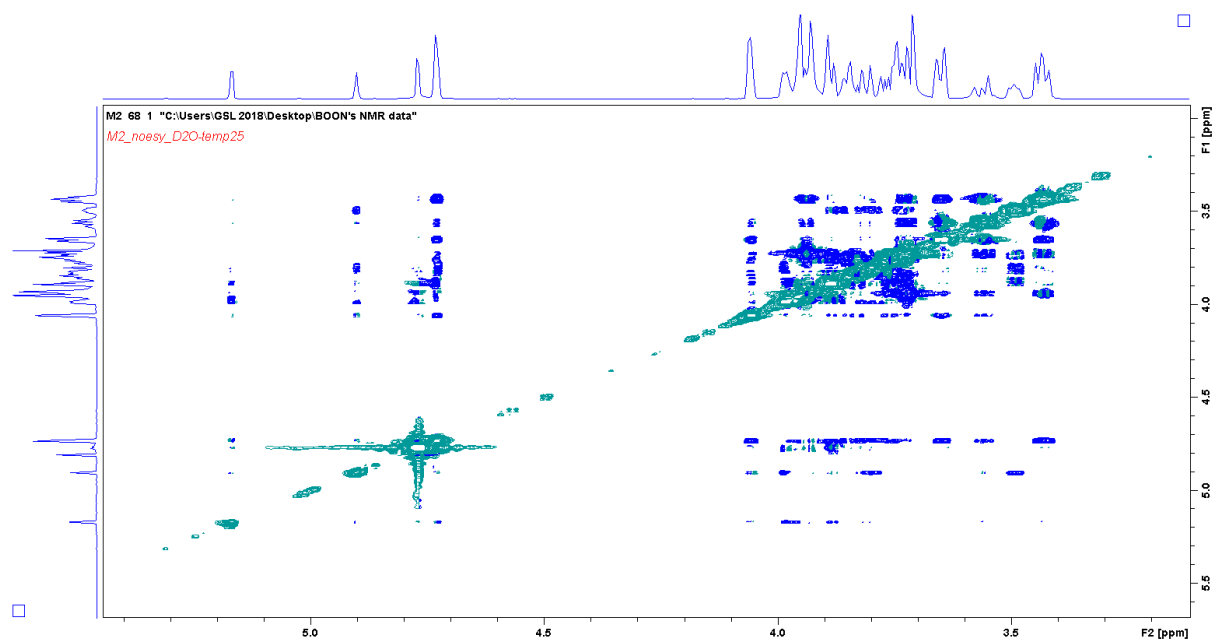


Fig.S6 NOESY spectrum of m-2.

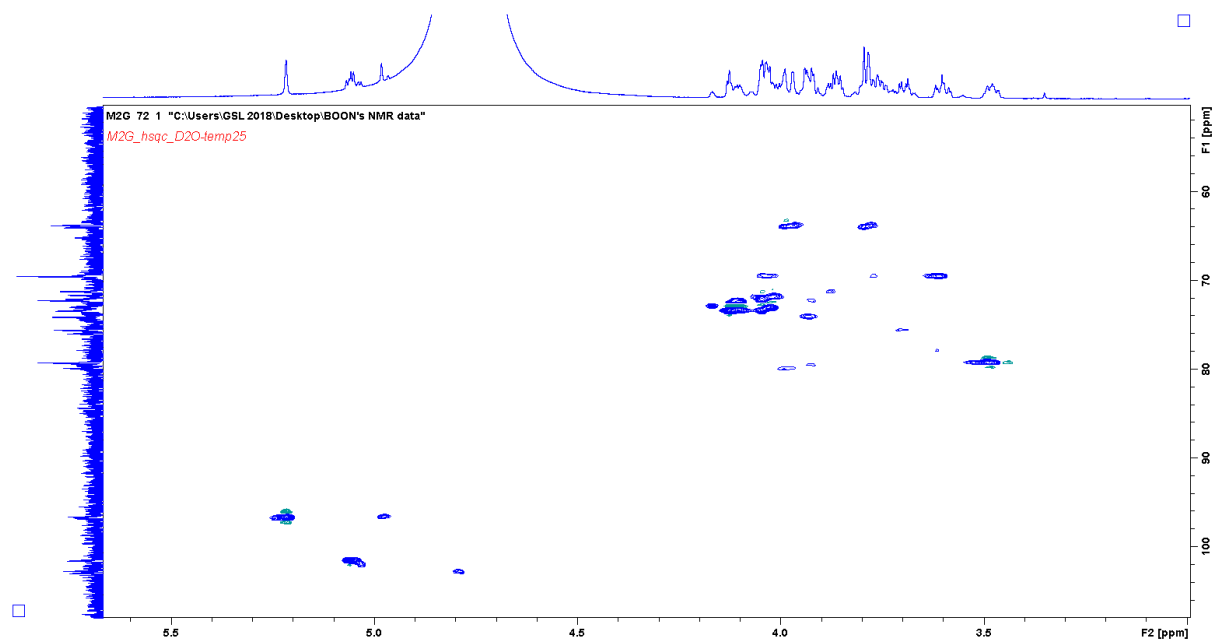


Fig.S7 HSQC spectrum of m-3.

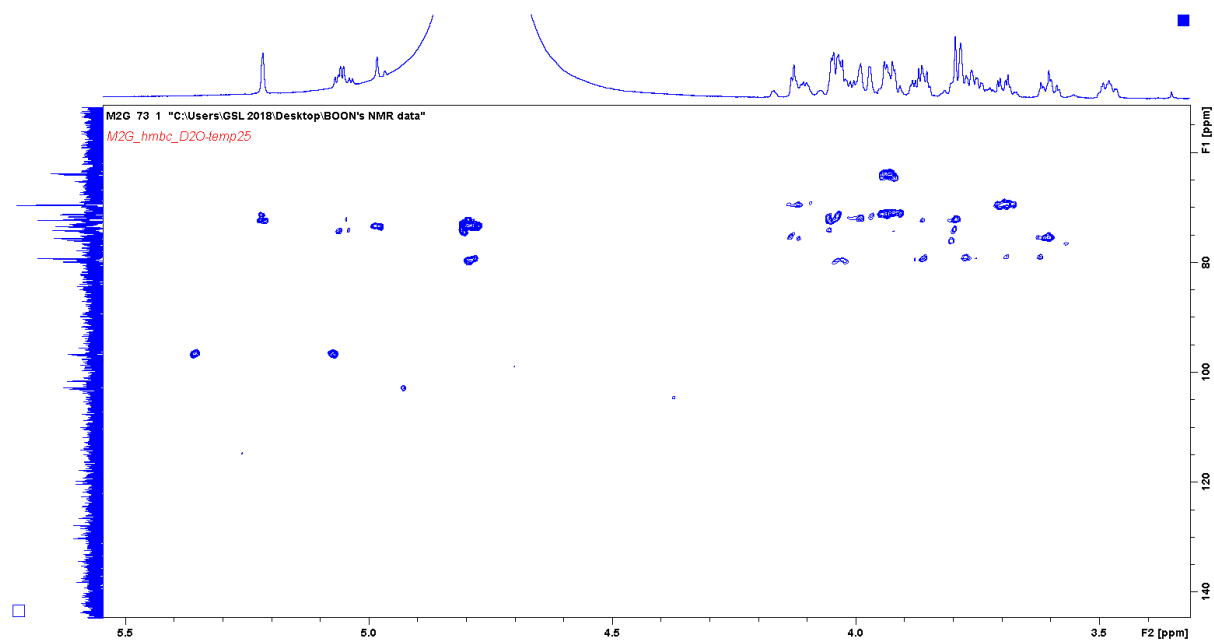


Fig.S8 HMBC spectrum of m-3.

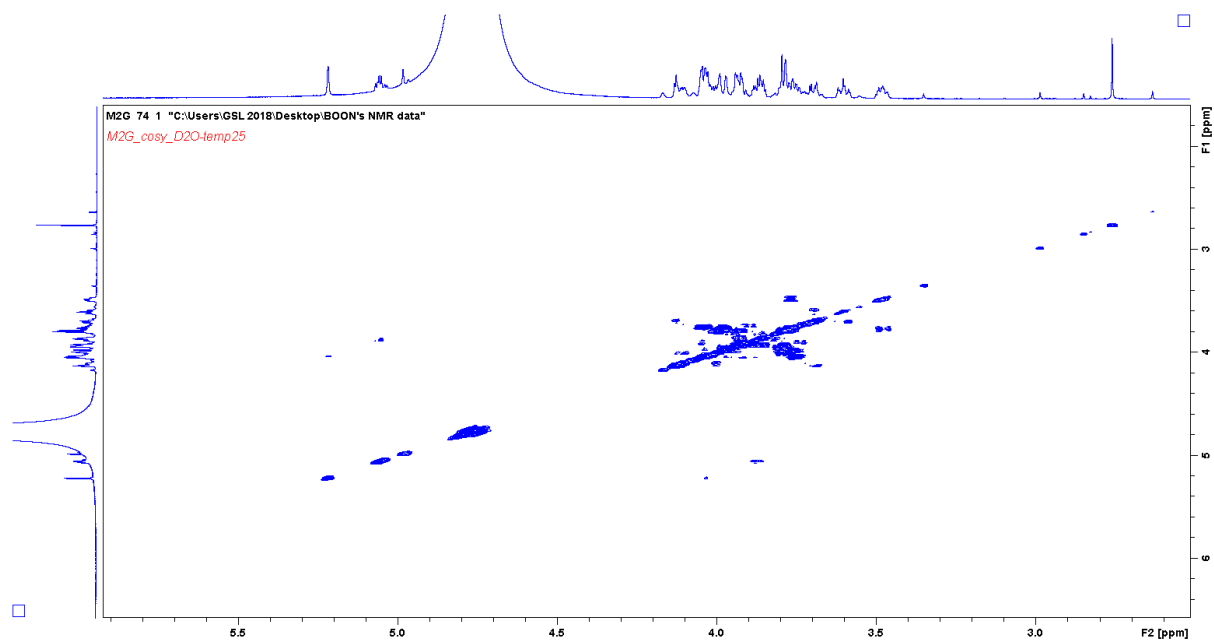


Fig.S9 COSY spectrum of m-3.

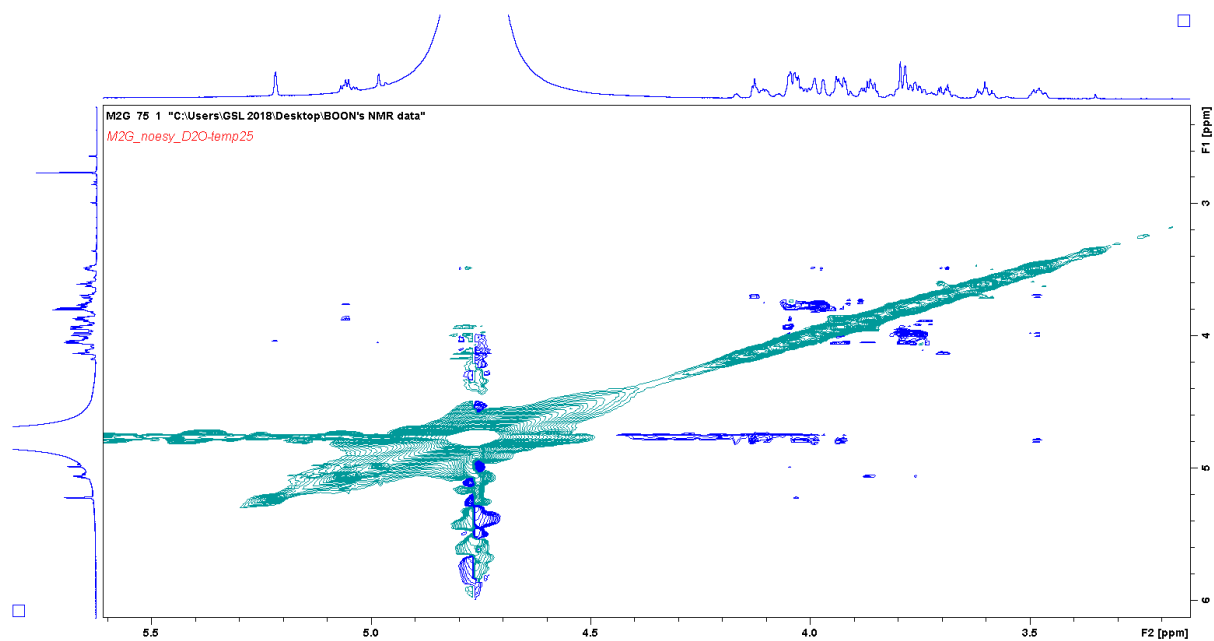


Fig.S10 NOESY spectrum of m-3.

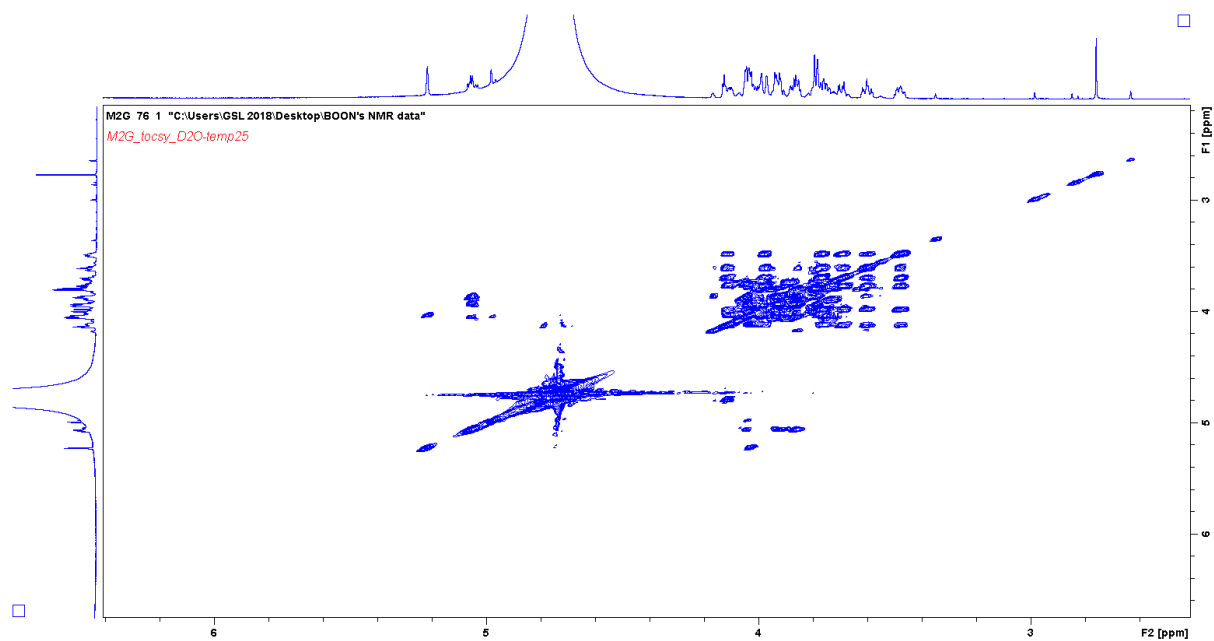


Fig.S11 TOCSY spectrum of m-3.

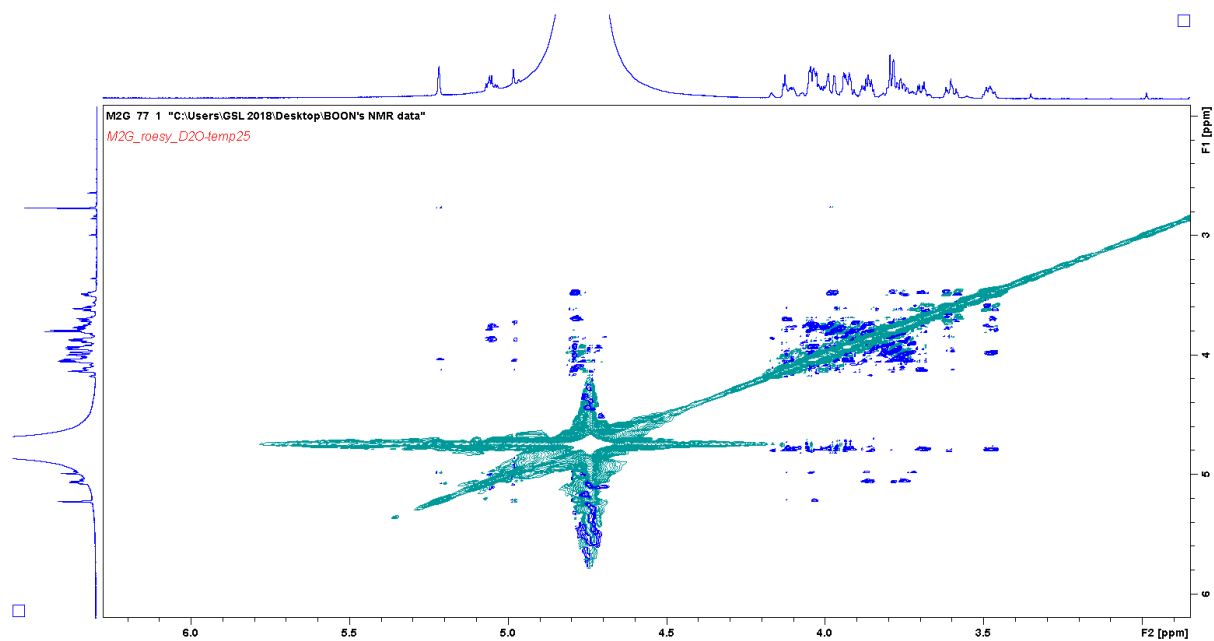


Fig.S12 ROESY spectrum of m-3.