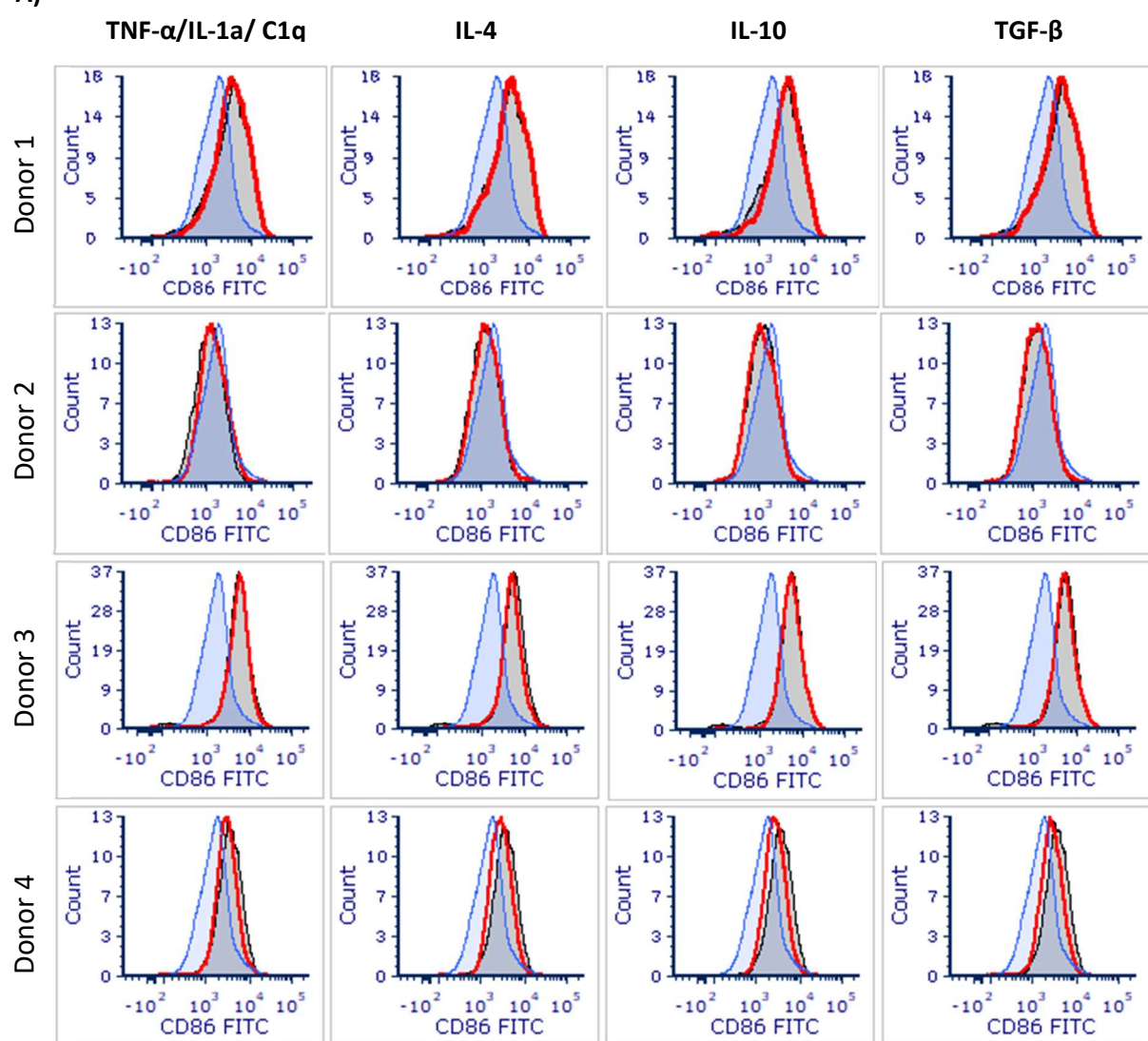
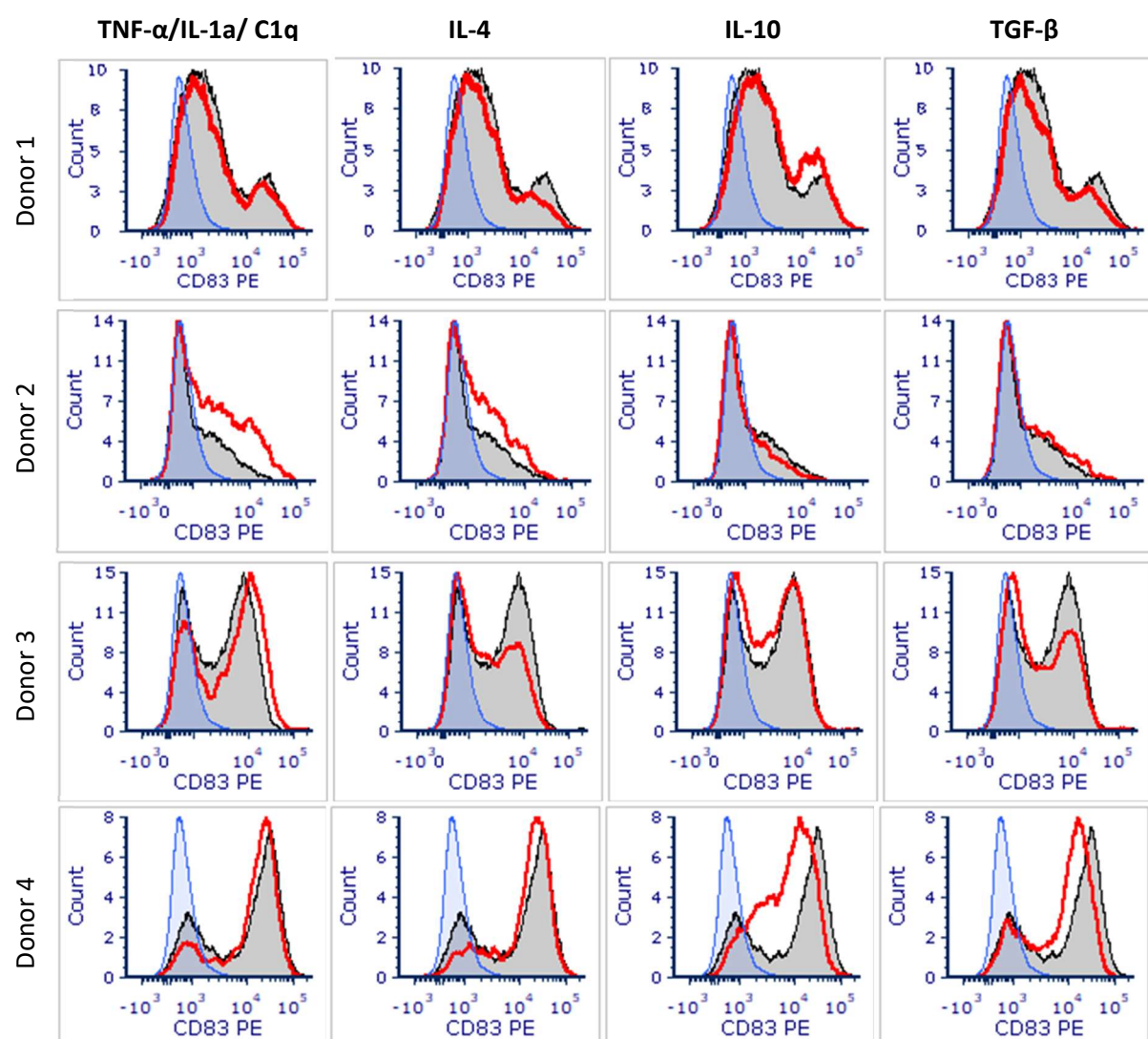


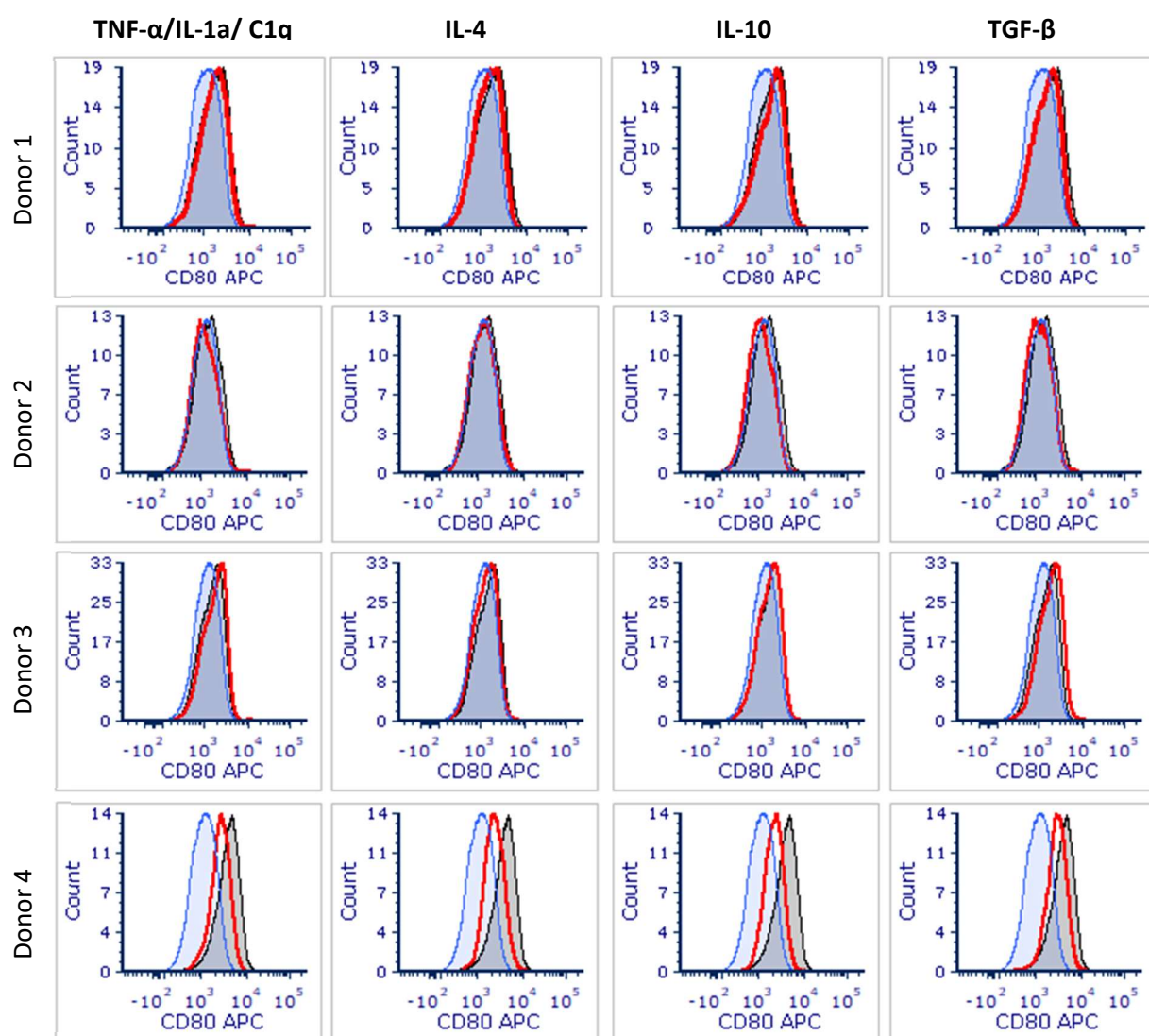
A)



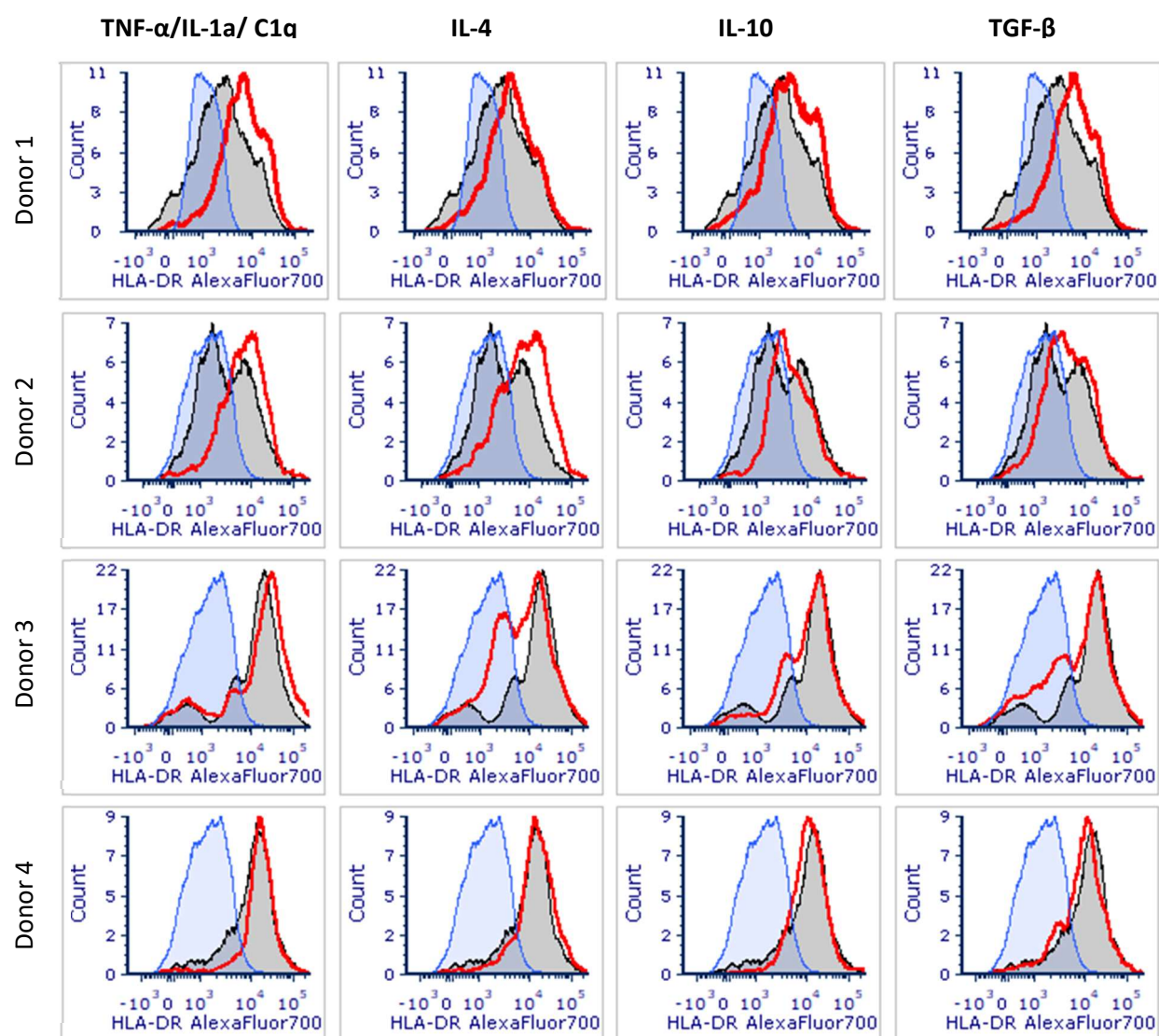
B)



c)



D)



Supplementary Figure S1. Expression of surface co-stimulatory molecules: CD86 (A), CD83 (B), CD80 (C) and HLA-DR (D) on astrocyte cells in response to various cytokine environment. Representative histograms for 4 astrocyte's donors. Blue-filled histograms represent cells stained with isotype control antibodies, grey-filled histograms represent molecule expression on astrocytes grown in non-stimulatory conditions (culture medium), red-line histograms represent molecule expression on astrocytes grown in cytokine-enriched conditions.