

Supplementary Materials

Real-time fluorescence imaging of His-tag-driven conjugation of mCherry proteins to silver nanowires.

Martyna Jankowska¹, Karolina Sulowska¹, Joanna Niedziółka-Jonsson², Sebastian Mackowski^{1*}

¹ Nanophotonics Group, Institute of Physics, Faculty of Physics, Astronomy and Informatics, Nicolaus Copernicus University in Torun, Grudziadzka 5, 87-100 Torun, Poland, email: mackowski@fizyka.umk.pl

² Institute of Physical Chemistry Polish Academy of Sciences, ul. Kasprzaka 44/52, 01-224 Warsaw, Poland

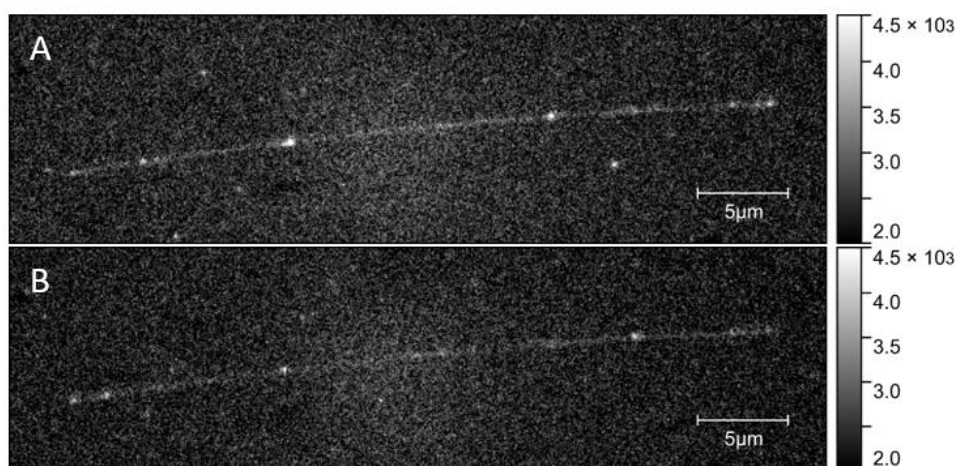


Figure S1 Fluorescence intensity maps of single mCherry for 10 s and 185 s.

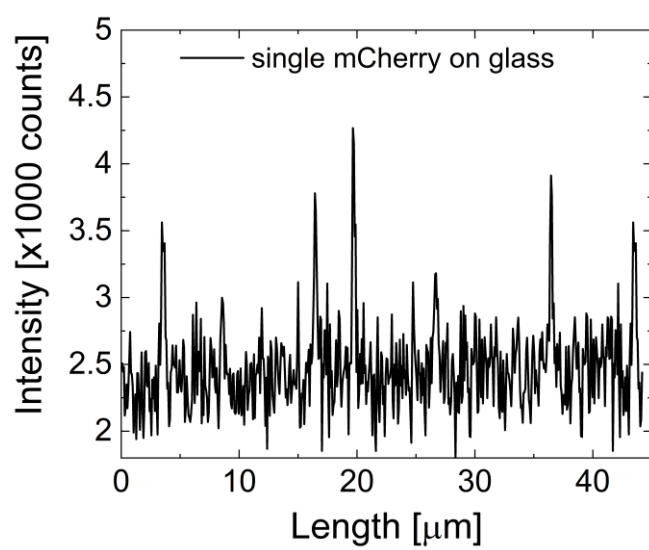


Figure S2 Cross-section of fluorescence intensity of single mCherry on glass.



Figure S3 Transmission map for real-time imaging experiment featuring isolated silver nanowires.

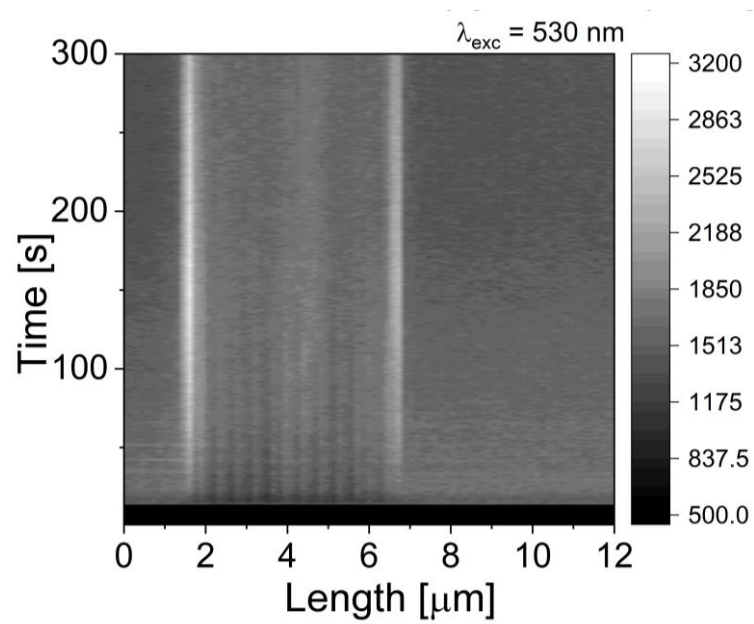


Figure S4 Transient behavior of fluorescence intensity of mCherry measured for a single AgNW.