

**Supplementary Table S1:**

*Search phrases used for the systematic review*

Database	Search terms	n
WEB OF SCIENCE	<p>Topic=("Child-to-parent violence*" OR "child to parent violence*" OR "child-to-parent aggression*" OR "child-to-parent abuse*" OR "adolescent-to-parent violence*" OR "violent child-to-parent*" OR "adolescent violence towards parents*" OR "parent abuse*" OR "children violence towards parents*" OR "adolescent to-parent abuse*" OR "violence against parents*" OR "Children violence against parents*" OR "Adolescent violence against parents*" OR "Parent abuse offense*" OR "Child-parent violence*" OR "Child/parent violence*" OR "Child-parent aggression*" OR "youth-to-parent aggression*" OR "youth-to-parent violence*" OR "youth-to-parent abuse*" OR "youth aggression toward parents*" OR "youth violence toward parents*" OR "child-to-mother aggression*" OR "child-to-father aggression*" OR "teenage violence toward parents*" OR "adolescent-to-parent aggression*" OR "adolescent-parent abuse*" OR "adolescent aggression toward parents*" OR "adolescent violence toward parents*" OR "adolescent abuse toward parents*" OR "child-to-father violence*" OR "child-to-mother violence*" OR "child initiated family violence*" OR "adolescent-initiated parent abuse*" OR "battered parent*" OR "juvenile domestic violence*" OR "adolescent family violence*" OR "youth violence in the home*" OR "teen violence toward mothers*" OR "parents abused by children*" OR "adolescent violence in the home*" OR "parent-directed aggression*" OR "violence children against mothers*" OR "aggression toward mothers*" OR "aggression toward fathers*" OR "mother abuse*" OR "abuse toward mothers*" OR "filio parental violence*" OR "violence by children toward parents*" OR "violence by adolescents toward parents*" OR "parents abused by their children*" OR "abuse of parents by their adolescent*" OR "violence by children against parents*" OR "violence by child to parent*" OR "violence by adolescent to parent*" OR "aggression by child to parent*" OR "parents victimized by their children*" OR "parental abuse*" OR "child-to-parent violence*" )</p> <p>TITLE-ABS-KEY ( "Child-to-parent violence*" OR "child to parent violence*" OR "child-to-parent aggression*" OR "child-to-parent abuse*" OR "adolescent-to-parent violence*" OR "violent child-to-parent*" OR "adolescent violence towards parents*" OR "parent abuse*" OR "children violence towards parents*" OR "adolescent to-parent abuse*" OR "violence against parents*" OR "Children violence against parents*" OR "Adolescent violence against parents*" OR "Parent abuse offense*" OR "Child-parent violence*" OR "Child/parent violence*" OR "Child-parent aggression*" OR "youth-to-parent aggression*" OR "youth-to-parent violence*" OR "youth-to-parent abuse*" OR "youth aggression toward parents*" OR "youth violence toward parents*" OR "child-to-mother aggression*" OR "child-to-father aggression*" OR "teenage violence toward parents*" OR "adolescent-to-parent aggression*" OR "adolescent-parent abuse*" OR "adolescent aggression toward parents*" OR "adolescent violence toward parents*" OR "adolescent abuse toward parents*" OR "child-to-father violence*" OR "child-to-mother violence*" OR "child initiated family violence*" OR "adolescent-initiated parent abuse*" OR "battered parent*" OR "juvenile domestic violence*" OR "adolescent family</p>	827
SCOPUS	<p>adolescent aggression toward parents*" OR "adolescent violence toward parents*" OR "adolescent abuse toward parents*" OR "child-to-father violence*" OR "child-to-mother violence*" OR "child initiated family violence*" OR "adolescent-initiated parent abuse*" OR "battered parent*" OR "juvenile domestic violence*" OR "adolescent family</p>	622

violence\*" OR "youth violence in the home\*" OR "teen violence toward mothers\*" OR "parents abused by children\*" OR "adolescent violence in the home\*" OR "parent-directed aggression\*" OR "violence children against mothers\*" OR "aggression toward mothers\*" OR "aggression toward fathers\*" OR "mother abuse\*" OR "abuse toward mothers\*" OR "filio parental violence\*" OR "violence by children toward parents\*" OR "violence by adolescents toward parents\*" OR "parents abused by their children\*" OR "abuse of parents by their adolescent\*" OR "violence by children against parents\*" OR "violence by child to parent\*" OR "violence by adolescent to parent\*" OR "aggression by child to parent\*" OR "parents victimized by their children\*" OR "parental abuse\*" OR "child-to-parent violences\*" )

All fields=("Child-to-parent violence\*" OR "child to parent violence\*" OR "child-to-parent aggression\*" OR "child-to-parent abuse\*" OR "adolescent-to-parent violence\*" OR "violent child-to-parent\*" OR "adolescent violence towards parents\*" OR "parent abuse\*" OR "children violence towards parents\*" OR "adolescent to-parent abuse\*" OR "violence against parents\*" OR "Children violence against parents\*" OR "Adolescent violence against parents\*" OR "Parent abuse offense\*" OR "Child-parent violence\*" OR "Child/parent violence\*" OR "Child-parent aggression\*" OR "youth-to-parent aggression\*" OR "youth-to-parent violence\*" OR "youth-to-parent abuse\*" OR "youth aggression toward parents\*" OR "youth violence toward parents\*" OR "child-to-mother aggression\*" OR "child-to-father aggression\*" OR "teenage violence toward parents\*" OR "adolescent-to-parent aggression\*" OR "adolescent-parent abuse\*" OR "adolescent aggression toward parents\*" OR "adolescent violence toward parents\*" OR "adolescent abuse toward parents\*" OR "child-to-father violence\*" OR "child-to-mother violence\*" OR "child initiated family violence\*" OR "adolescent-initiated parent abuse\*" OR "battered parent\*" OR "juvenile domestic violence\*" OR "adolescent family violence\*" OR "youth violence in the home\*" OR "teen violence toward mothers\*" OR "parents abused by children\*" OR "adolescent violence in the home\*" OR "parent-directed aggression\*" OR "violence children against mothers\*" OR "aggression toward mothers\*" OR "aggression toward fathers\*" OR "mother abuse\*" OR "abuse toward mothers\*" OR "filio parental violence\*" OR "violence by children toward parents\*" OR "violence by adolescents toward parents\*" OR "parents abused by their children\*" OR "abuse of parents by their adolescent\*" OR "violence by children against parents\*" OR "violence by child to parent\*" OR "violence by adolescent to parent\*" OR "aggression by child to parent\*" OR "parents victimized by their children\*" OR "parental abuse\*" OR "child-to-parent violences\*" )

PSYCINFO

520

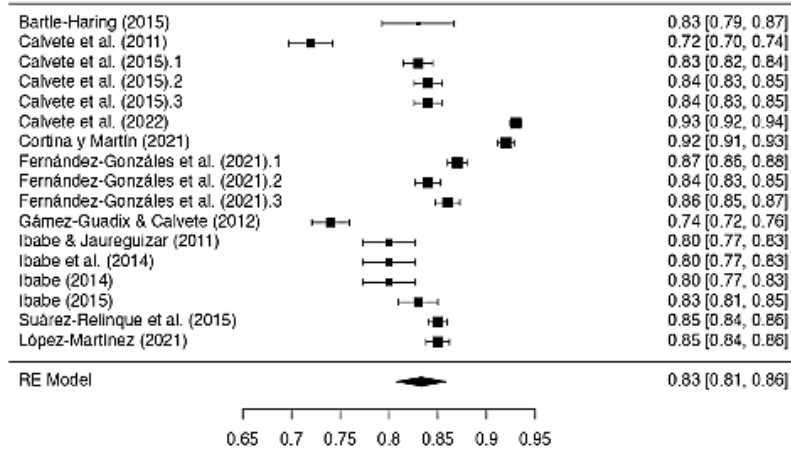
OR "youth aggression toward parents\*" OR "youth violence toward parents\*" OR "child-to-mother aggression\*" OR "child-to-father aggression\*" OR "teenage violence toward parents\*" OR "adolescent-to-parent aggression\*" OR "adolescent-parent abuse\*" OR "adolescent aggression toward parents\*" OR "adolescent violence toward parents\*" OR "adolescent abuse toward parents\*" OR "child-to-father violence\*" OR "child-to-mother violence\*" OR "child initiated family violence\*" OR "adolescent-initiated parent abuse\*" OR "battered parent\*" OR "juvenile domestic violence\*" OR "adolescent family violence\*" OR "youth violence in the home\*" OR "teen violence toward mothers\*" OR "parents abused by children\*" OR "adolescent violence in the home\*" OR "parent-directed aggression\*" OR "violence children against mothers\*" OR "aggression toward mothers\*" OR "aggression toward fathers\*" OR "mother abuse\*" OR "abuse toward mothers\*" OR "filio parental violence\*" OR "violence by children toward parents\*" OR "violence by adolescents toward parents\*" OR "parents abused by their children\*" OR "abuse of parents by their adolescent\*" OR "violence by children against parents\*" OR "violence by child to parent\*" OR "violence by adolescent to parent\*" OR "aggression by child to parent\*" OR "parents victimized by their children\*" OR "parental abuse\*" OR "child-to-parent violences\*" )

PSYCARTICLES  
TOTAL

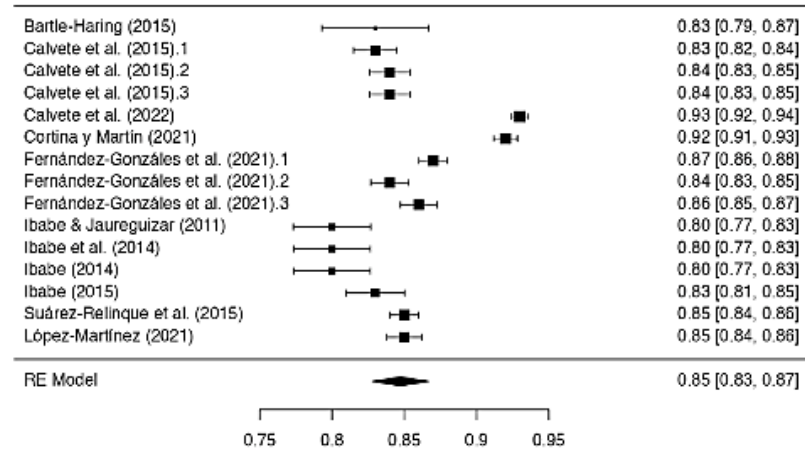
233  
2202

Supplementary Figure S1. Cronbach's Alpha Global sensitivity analysis

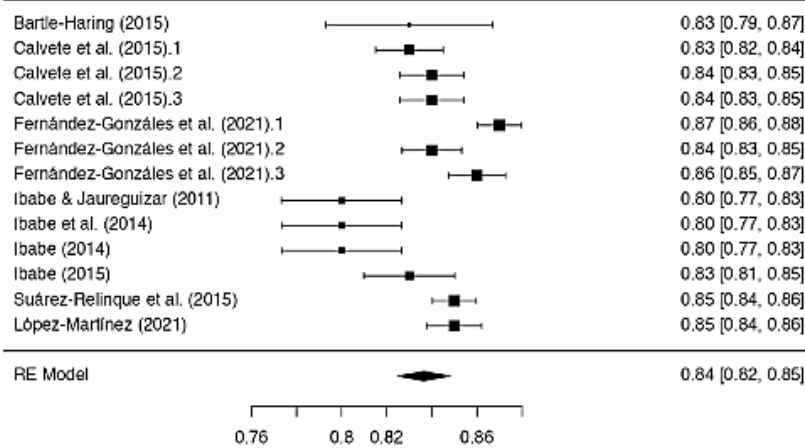
### Model 1



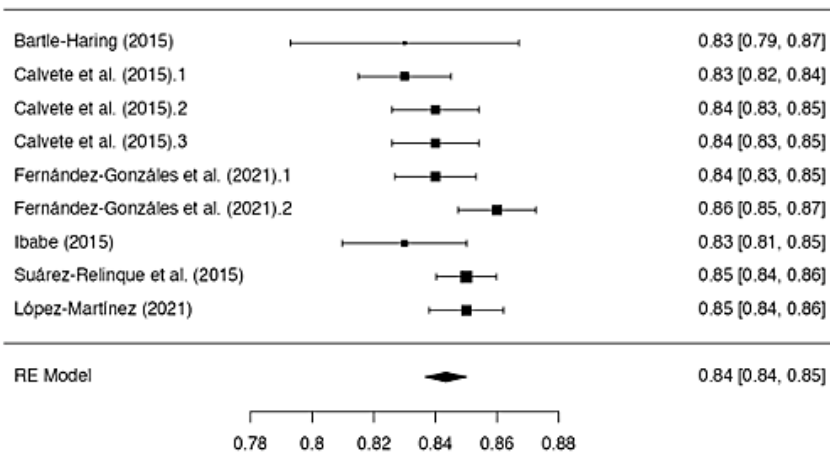
### Model 2



### Model 3



### Model 4



In Model 1, the Egger coefficient was -3.261 and I<sup>2</sup> was 98.45%. This is the initial model. In the second model, studies with an alpha less than .80 were removed. Minor differences were found in the coefficients, with Egger = -4.226 and I<sup>2</sup> = 97.28%. In the third model, studies with an alpha greater than .90 were eliminated, resulting in coefficients of Egger = -5.045 and I<sup>2</sup> = 86.89%. In Model 4, studies with alpha values less than .83 and greater than .85 were removed. This yielded an Egger = -1.879 and I<sup>2</sup> = 49.41%. Thus, outliers appear to influence the initial model. However, these results should be cautiously interpreted. This will be a priority objective for future studies the following year.