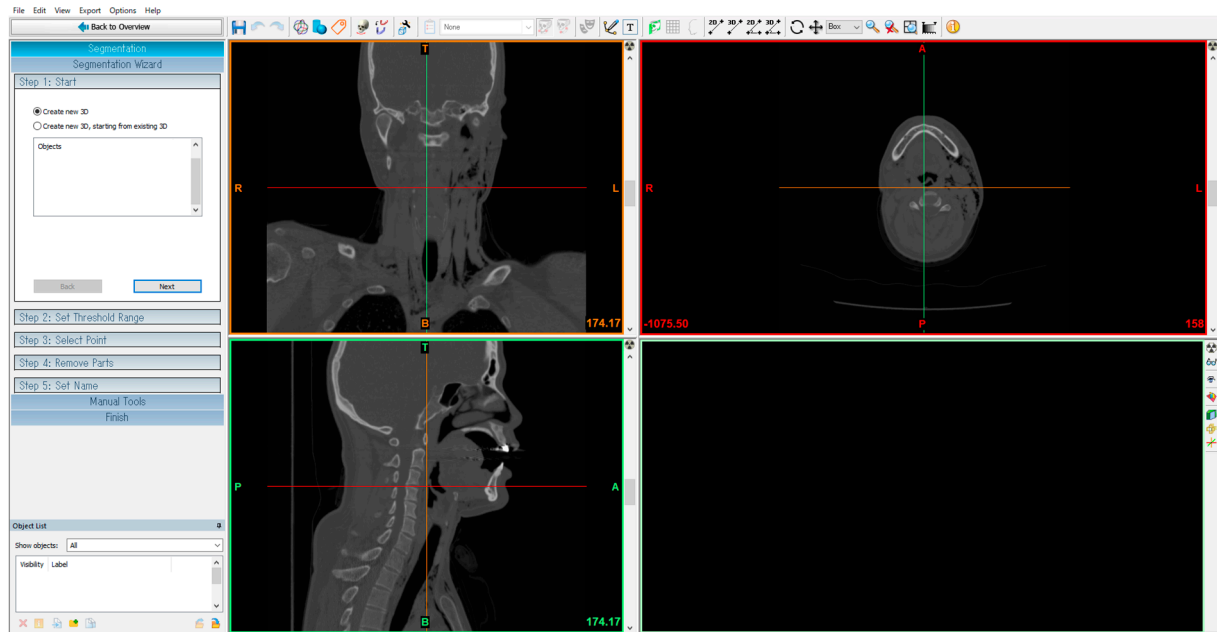
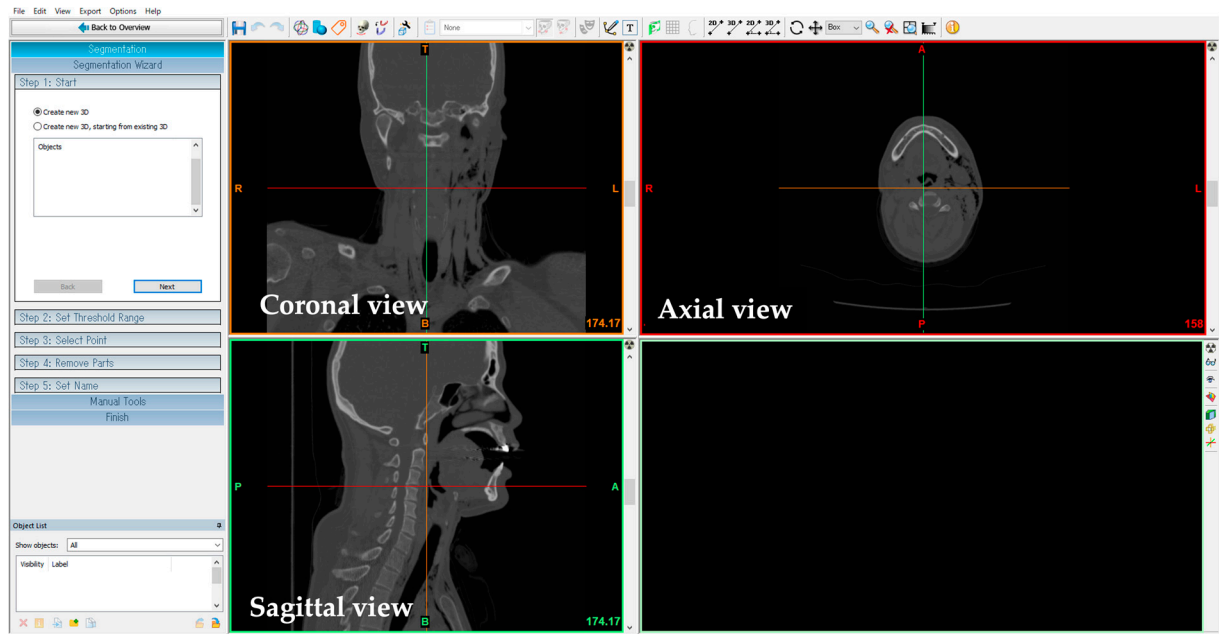


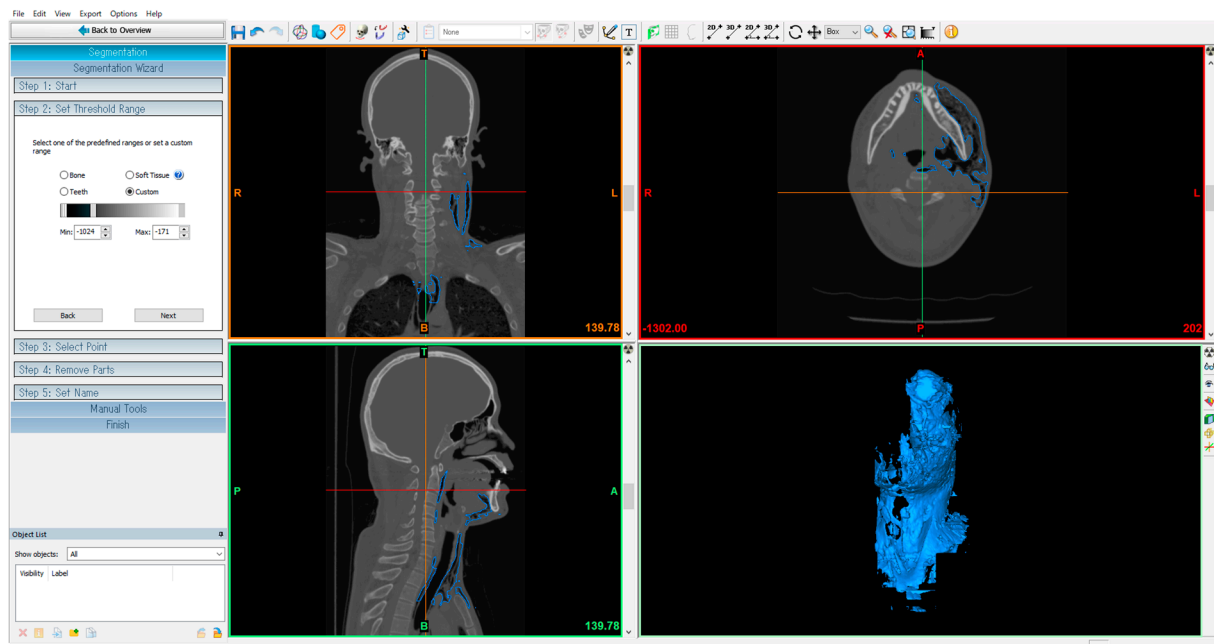
## Supplementary Materials: Measurement method of subcutaneous emphysema using 3D simulation from CT data



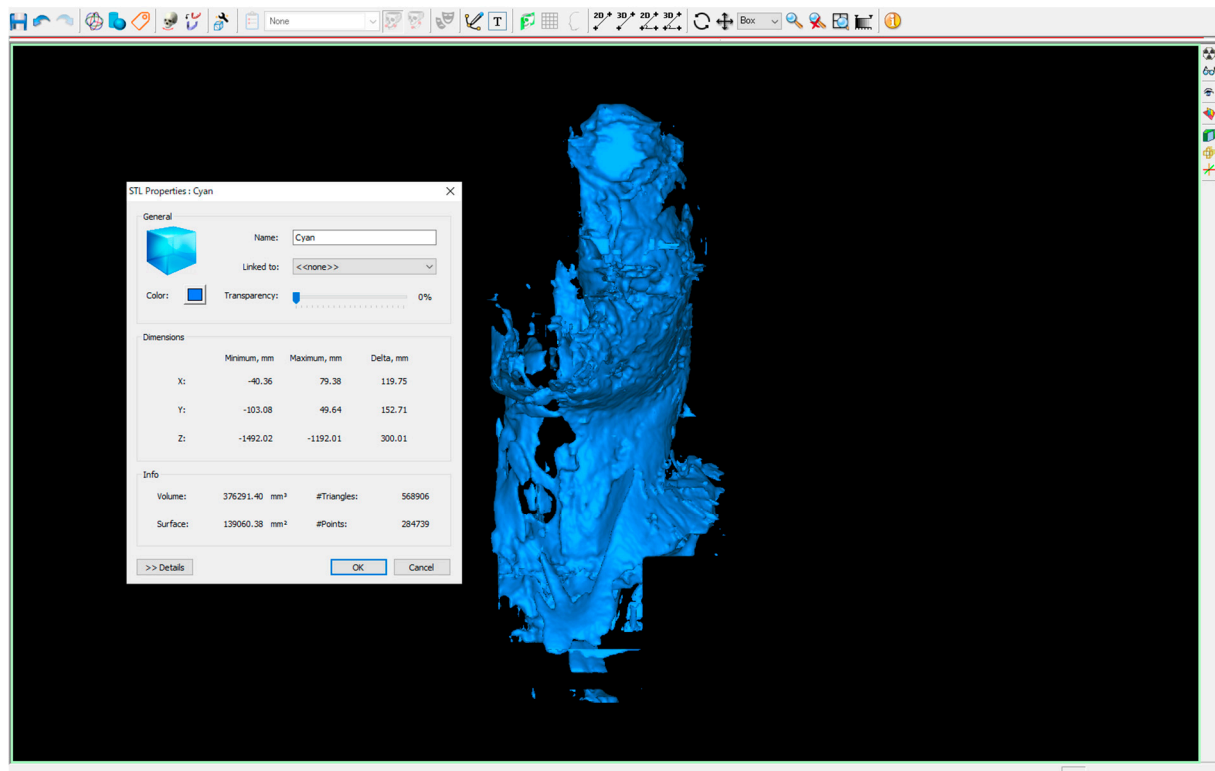
1) Reading CT data (DICOM): Save the DICOM data output during CT shooting to the PC on which ProPlan CMF 3.0 is installed, start the software, and open the data.



2) Setting the threshold range: Select bone level range between 226–3071.



- 3) Setting the threshold range: Set a custom air range between -1024 – -170.
- 4) Remove parts: Select the regions that have to be removed in 2D or 3D. If you have selected a site different from subcutaneous emphysema, such as the airway, we removed it manually.
- 5) Segment the 3D objects that we need for analysis.



6) Analyze the emphysema volume: The 3D image was converted to stereolitho-graph format, and the volume was measured using xyz coordinates.