

Article

Mass Spectrometry-Based Proteomics of Human Milk to Identify Differentially Expressed Proteins in Women with Breast Cancer versus Controls

Roshanak Aslebagh ¹, Danielle Whitham ¹, Devika Channaveerappa ¹, Panashe Mutsengi ¹, Brian Pentecost ², Kathleen F. Arcaro ² and Costel C. Darie ^{1,3}

¹ Biochemistry & Proteomics Group, Department of Chemistry & Biomolecular Science, Clarkson University, 8 Clarkson Avenue, Potsdam, NY, 13699-5810, USA

² Department of Veterinary & Animal Sciences, University of Massachusetts, Amherst, 240 Thatcher Road, LSL 1 Room N529, Amherst, MA 01003-9298

* Correspondence: Costel C. Darie, Tel: (315) 268-7763, Fax: (315) 268-6610, E-mail: cdarie@clarkson.edu

Citation: Aslebagh, R.; Whitham, D.; Channaveerappa, D.; Mutsengi, P.; Pentecost, B.; Arcaro, K.F.; Darie, C.C. Mass Spectrometry-Based Proteomics of Human Milk to Identify Differentially Expressed Proteins in Women with Breast Cancer versus Controls. *Proteomes* **2022**, *10*, 36. <https://doi.org/10.3390/proteomes10040036>

Academic Editors: Rodrigo Barderas-Manchado and Thomas Kislinger

Received: 1 September 2022

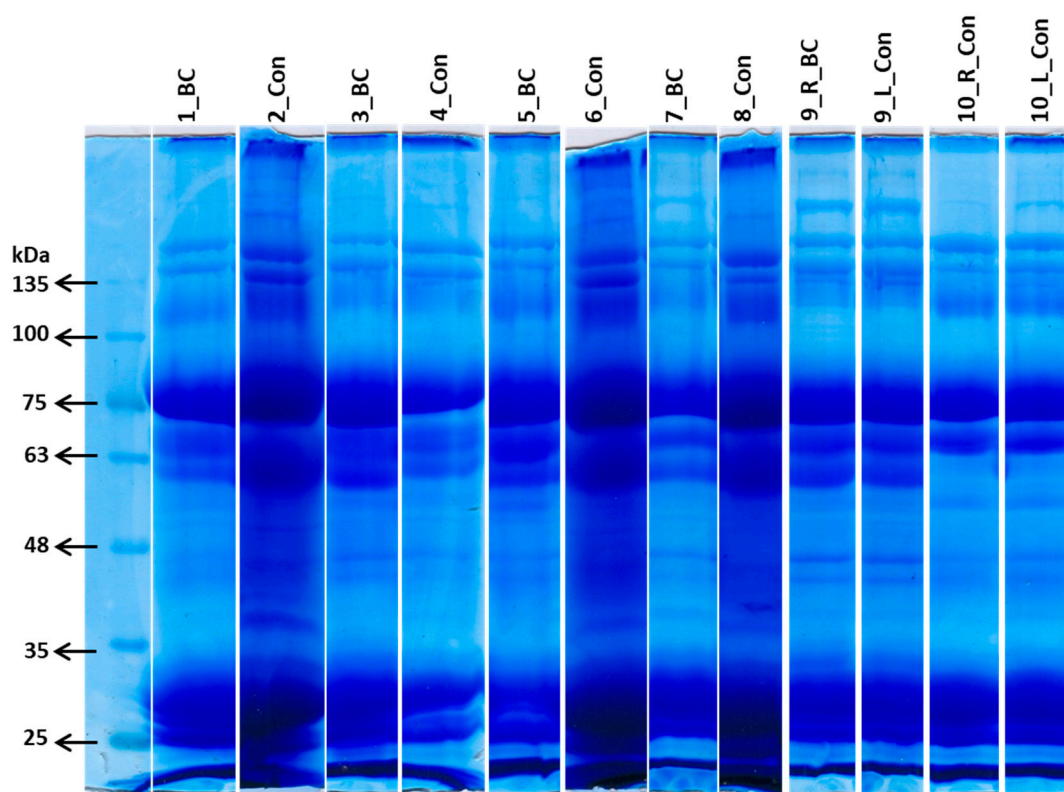
Accepted: 25 October 2022

Published: 28 October 2022

Publisher's Note: MDPI stays neutral with regard to jurisdictional claims in published maps and institutional affiliations.

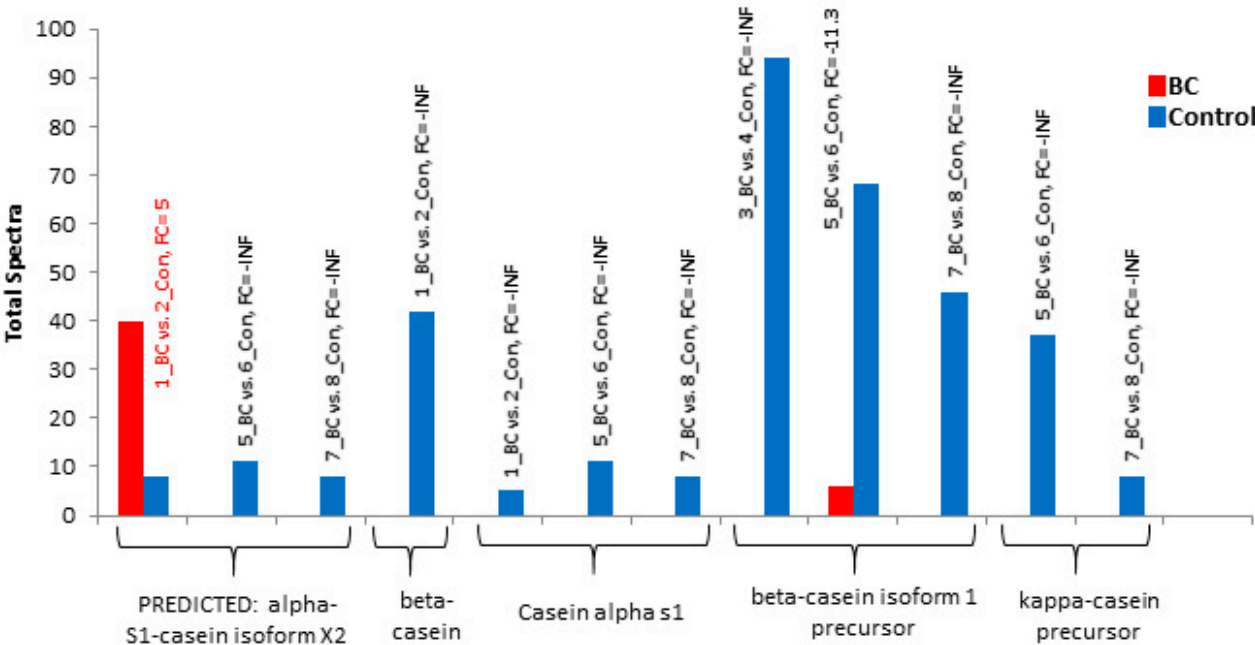


Copyright: © 2022 by the authors. Licensee MDPI, Basel, Switzerland. This article is an open access article distributed under the terms and conditions of the Creative Commons Attribution (CC BY) license (<https://creativecommons.org/licenses/by/4.0/>).

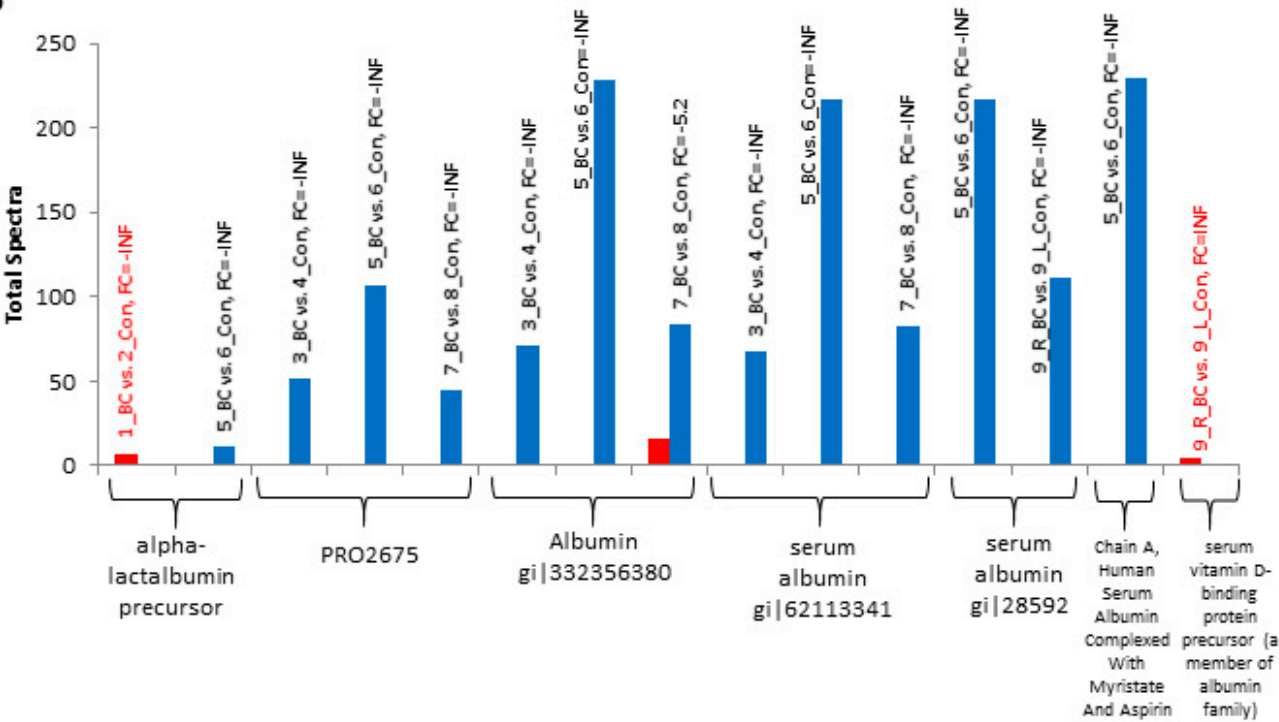


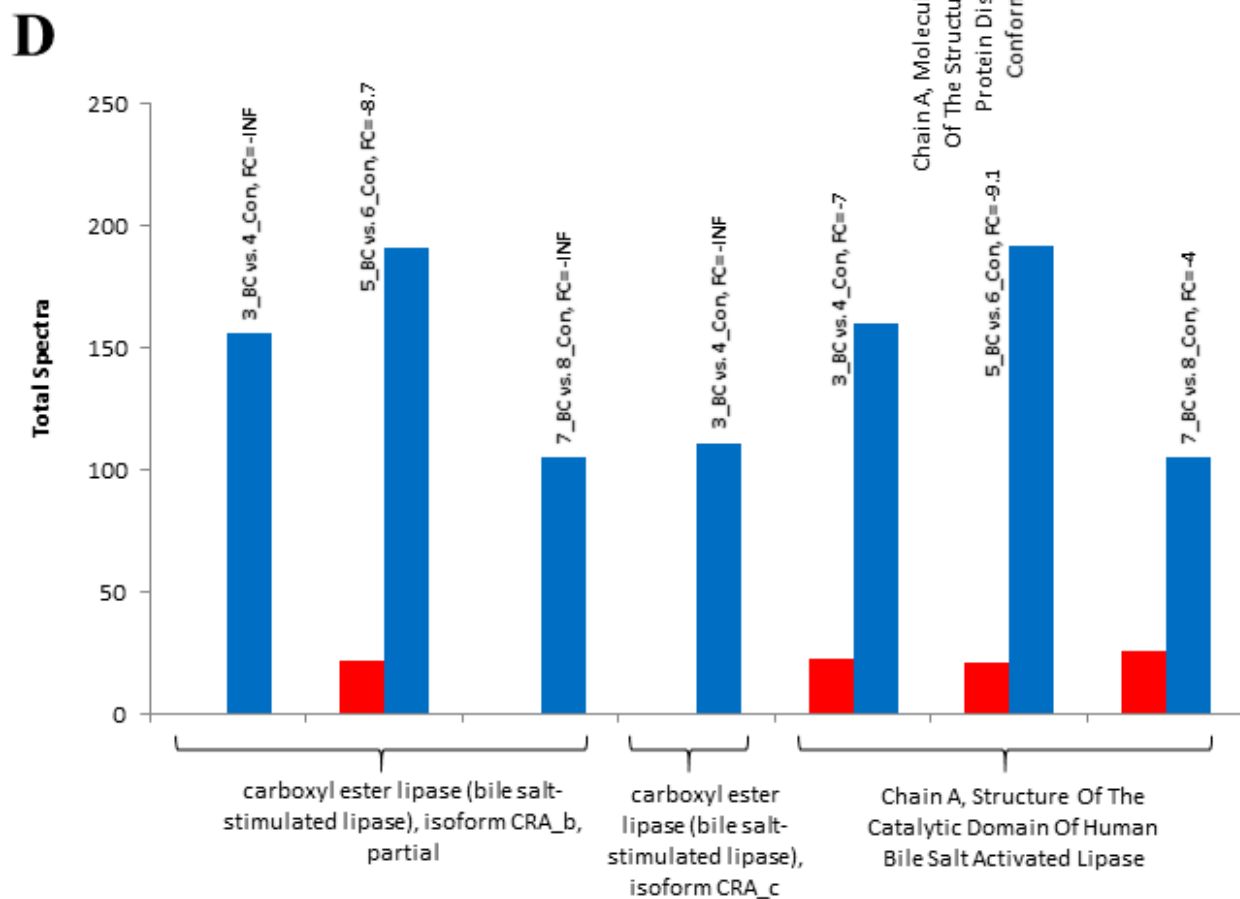
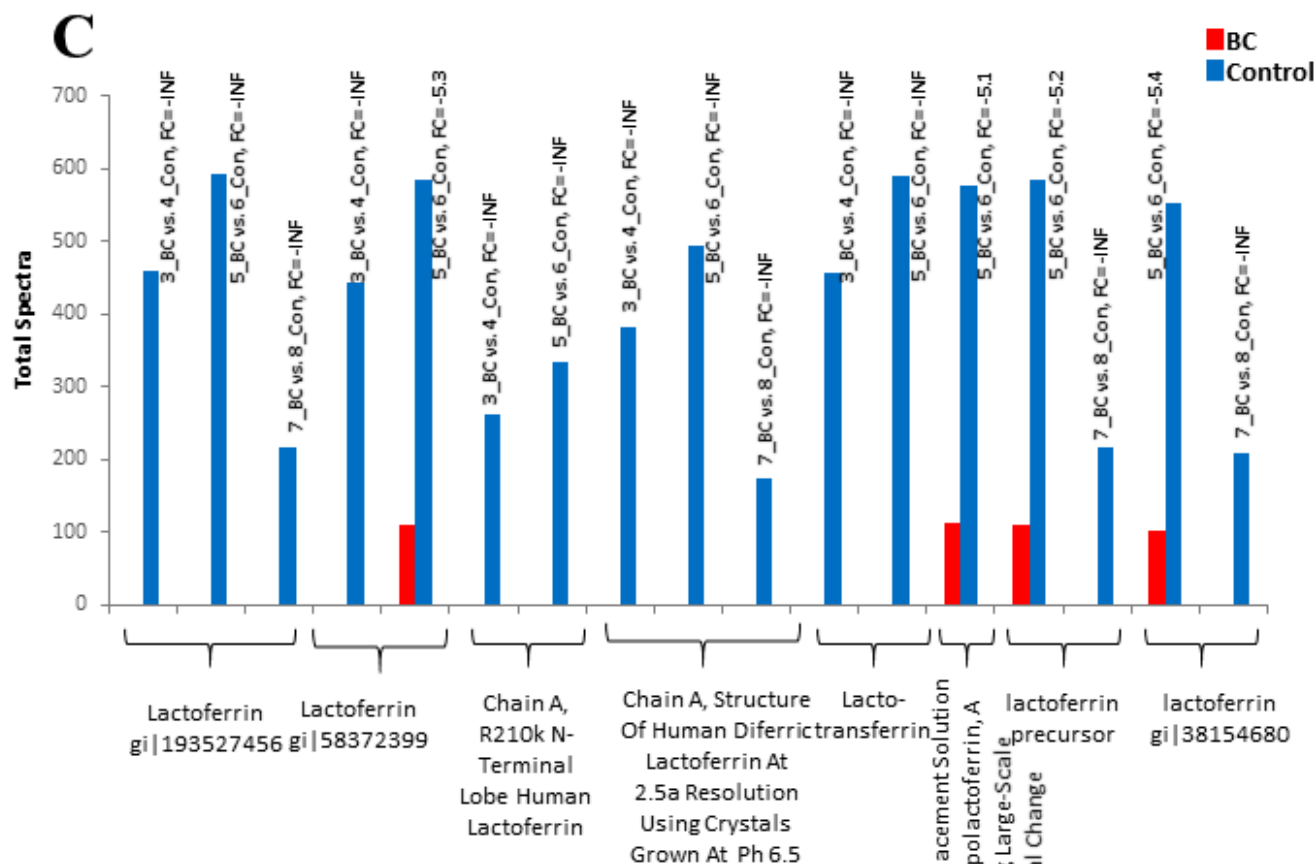
Supplemental Figure S1. SDS-PAGE of milk samples. Eight hundred µg of protein was loaded in each well. For better understanding, the gel lanes were cropped, and comparison pairs are shown next to each other.

A



B





Supplemental Figure S2. Dysregulated proteins in BC vs. control, also found to be dysregulated in our previous studies on human milk, which did not show any dysregulations in control samples from participant 10. Each bar graph shows total spectra counting in BC (in red) vs. control (in blue) for different proteins *within* the same family. The bars are labeled by the corresponding comparison pair and the fold change (FC) for each comparison. The red label means that the corresponding pair showed inconsistency compared to the other pairs in terms of up or down regulation. **a:** Downregulation of the proteins from casein family in BC vs. control. **b:** Downregulation of the proteins from albumin family in BC vs. control. **c:** Downregulation of the proteins from lactoferrin family in BC vs. control. **d:** Downregulation of the proteins from bile salt stimulated lipase family in BC vs. control.