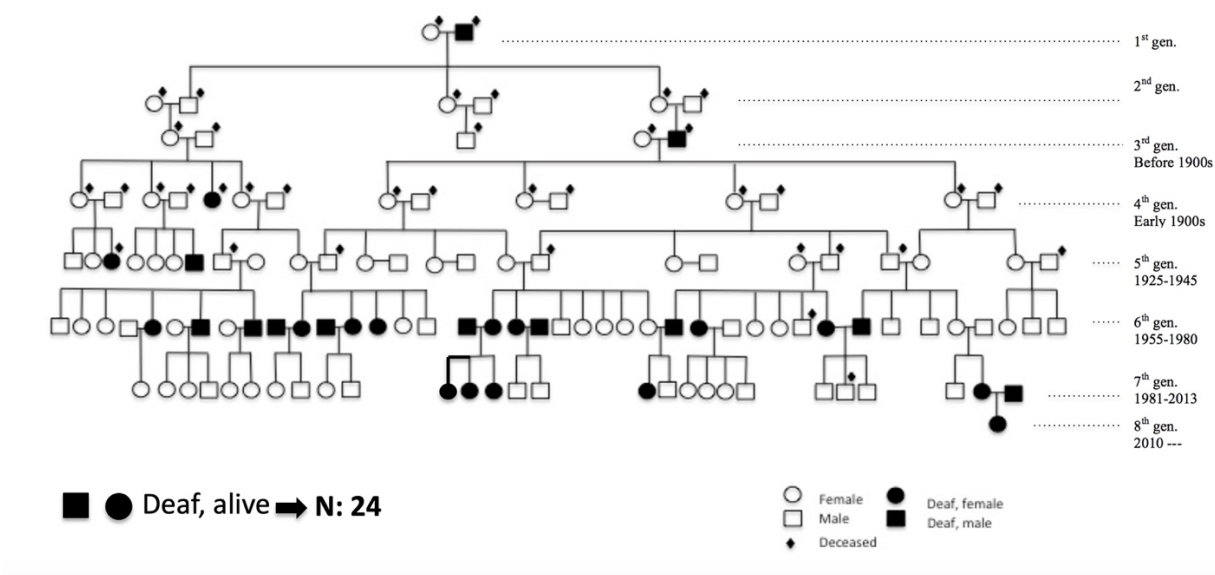


Supplementary S1

FAMILY TREE



## Supplementary S2

### Stimuli set in Study 1

Box



Bread board



Broom



Car



Cologne



Cooking pot



Copper vessel



Fork



Gas tank



Game cards



Glass



Glasses



Iron



Matches



Motor vehicle



Pen



Plate



Pot



Sieve



Soap



Spoon



Stove



String



Telephone



Teapot



Video camera



## Supplementary S3

Stimuli set in Study 2

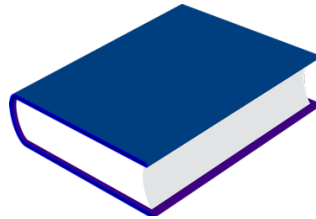
Ball



Box



Book



Bottle



Dress



Hat



Jacket



Scarf



Glasses



Plastic bag



Glass



Stick



Washing basin



Suitcase



Teapot



Toy car





## Supplementary S4

Communicative task in Study 2

Video clip: The woman drops sunglasses.



The pictures used for comprehension check:

