

On the Intercontinental Transferability of  
Regional Climate Model Response to Severe  
Forestation  
— Supplemental Material —

O. Asselin et al.

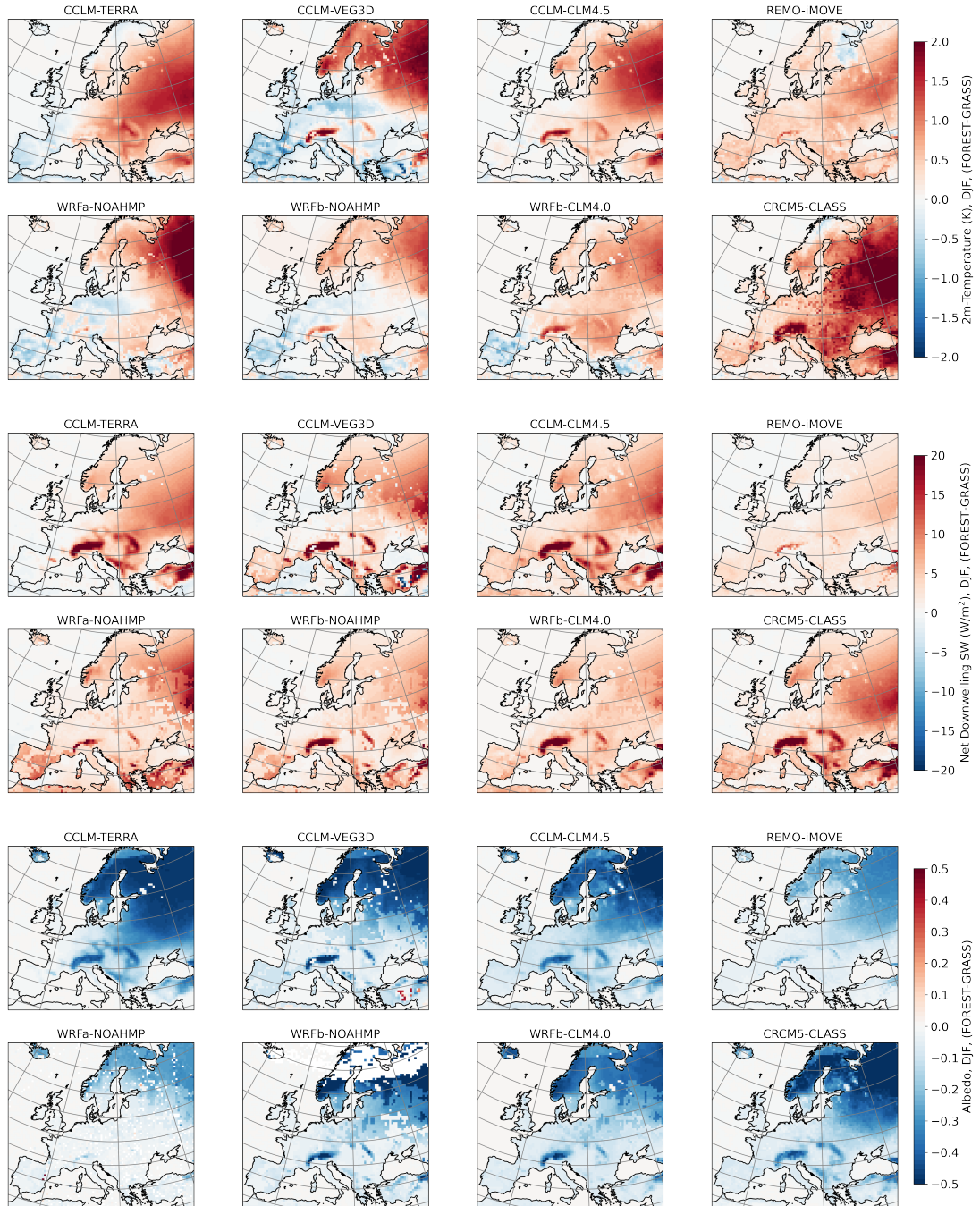


Figure S1: Comparison of the wintertime (DJF) temperature, shortwave and albedo responses of CRCM5 with some of the other LUCAS models of Davin et al. (2020).

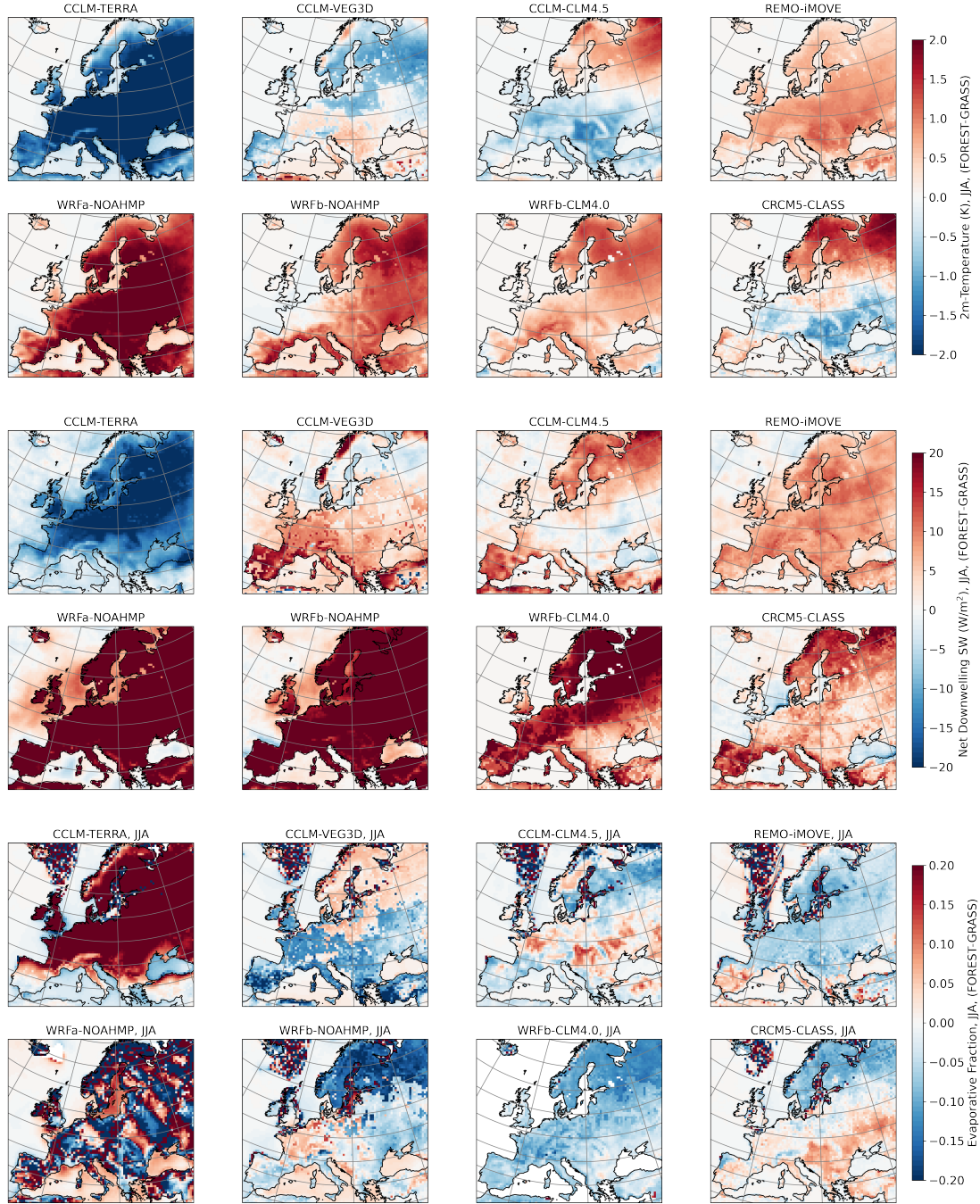


Figure S2: Comparison of the summertime (JJA) temperature, shortwave, and evaporative fraction responses of CRCM5 with some of the other LUCAS models of Davin et al. (2020).

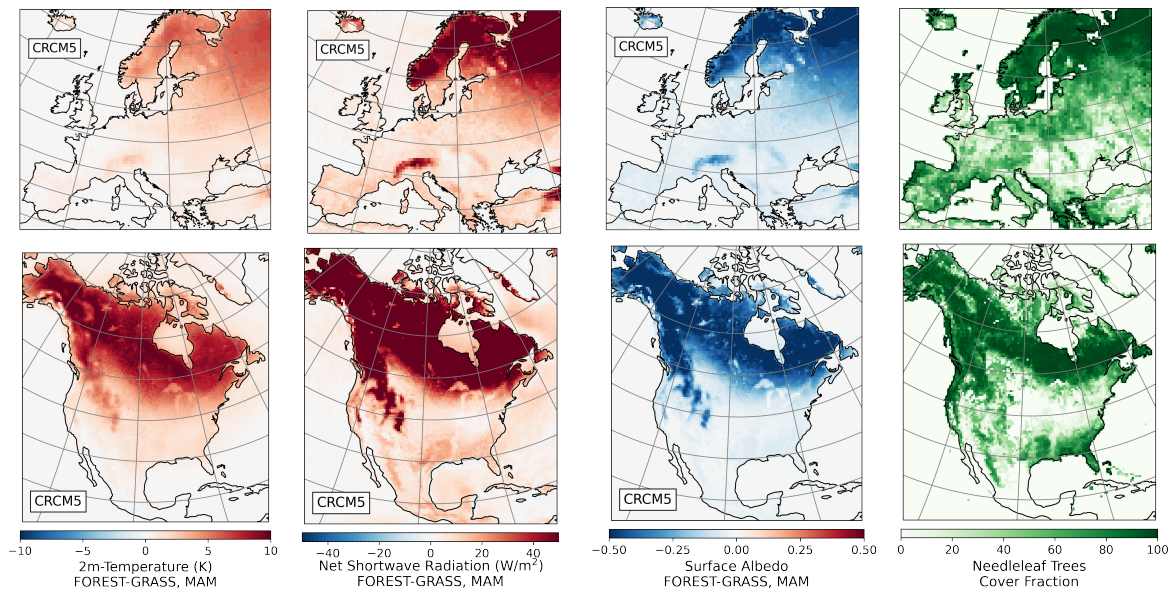


Figure S3: CRCM5-CLASS springtime response to forestation (FOREST-GRASS) averaged over 1986-2015, MAM. From left to right: near-surface temperature, shortwave radiation excess, surface shortwave albedo and needleleaf tree distribution.



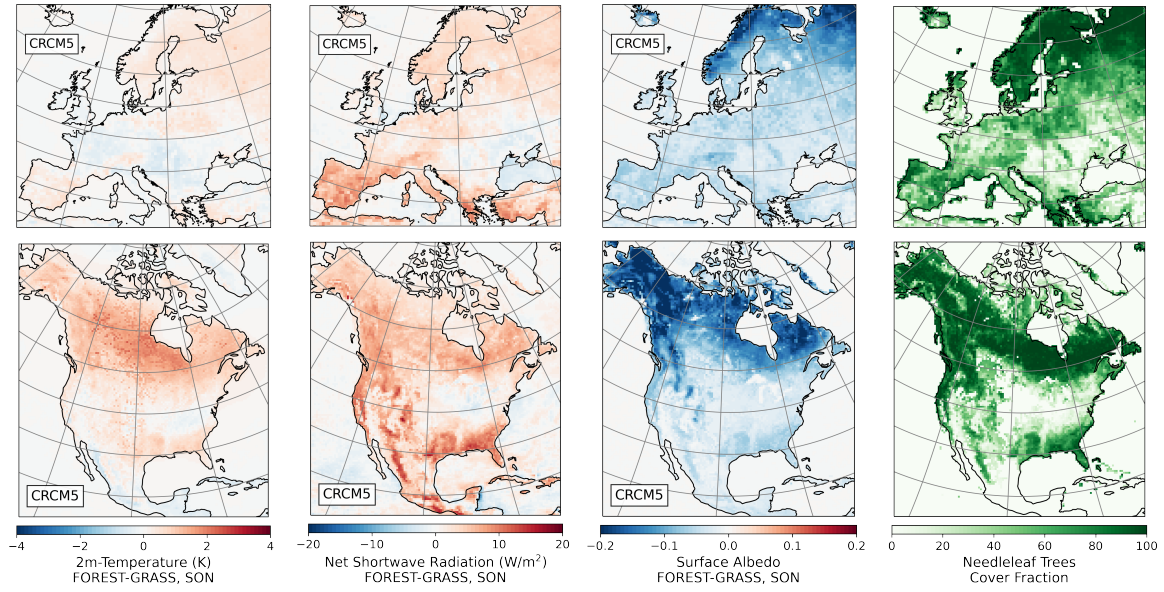


Figure S4: CRCM5-CLASS fall response to forestation (FOREST-GRASS) averaged over 1986-2015, SON. From left to right: near-surface temperature, short-wave radiation excess, surface shortwave albedo and needleleaf tree distribution.