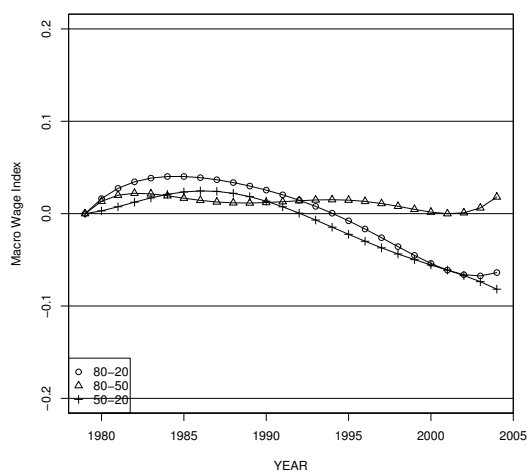
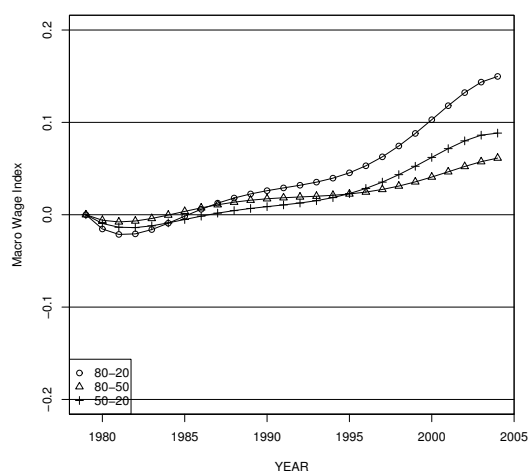


Figure S1. Cumulated growth of Entry Wages: (left) U.S.; and (right) Germany.

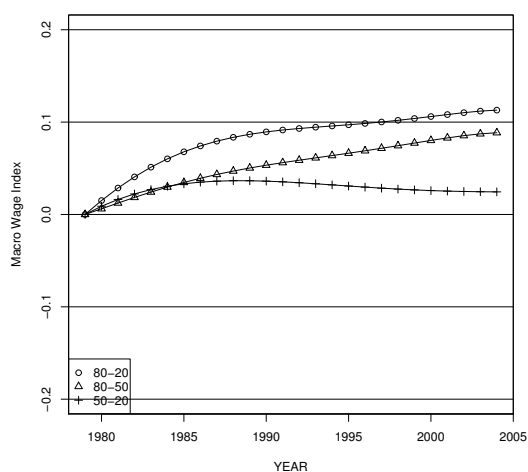
Differences in Time-Trends, Low-Education Males U.S.



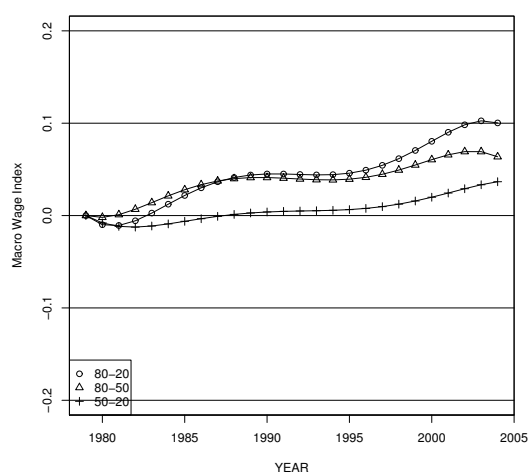
Differences in Time-Trends, Low-Education Males Germany.



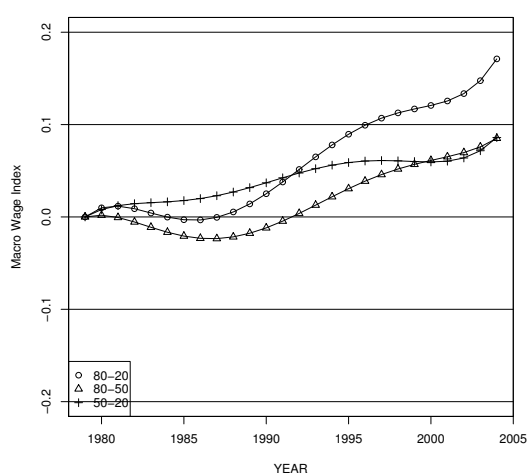
Differences in Time-Trends, Medium-Education Males U.S.



Differences in Time-Trends, Medium-Education Males Germany.



Differences in Time-Trends, High-Education Males U.S.



Differences in Time-Trends, High-Education Males Germany

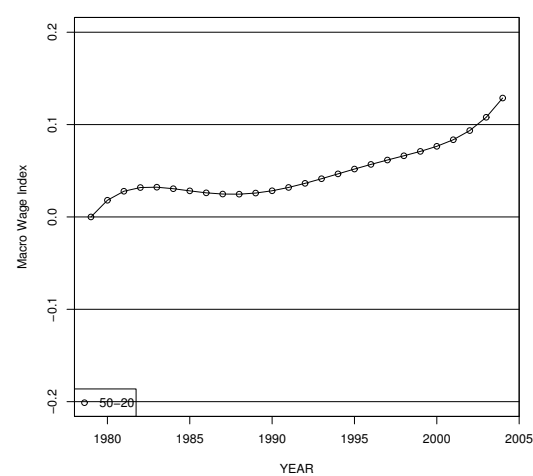
**Figure S2.** Differences in Time-Trends 1979–2004 for males: (left) U.S.; and (right) Germany.

Table S1. Model specification and results for full-time working men, U.S.

Education Group	Low			Medium			High		
Quantile	0.2	0.5	0.8	0.2	0.5	0.8	0.2	0.5	0.8
Model with $H_{UI} : \rho_j = 0, j = 1, \dots, 4$, and cohort effects before and after 1979	n.r.	n.r.	n.r.	n.r.*	n.r.	n.r.*	n.r.	n.r.	n.r.
Model with $H_{UI} : \rho_j = 0, j = 1, \dots, 4$, and no cohort effects $\gamma_{a2} = \gamma_{a3} = \gamma_{b2} = \gamma_{b3} = 0$	n.r.	n.r.	n.r.	n.r.	n.r.	n.r.*	n.r.	n.r.*	n.r.

Notes: Based on specification 12 [Model 1] in the main text. r. indicates that the specification is rejected. n.r. indicates that the specification is not rejected. n.r. marked models with an asterisk * are only not rejected at an $\alpha=0.01$ level, the others also for $\alpha=0.05$.

Table S2. Model specification and results for full-time working men, Germany.

Education Group	Low			Medium			High		
Quantile	0.2	0.5	0.8	0.2	0.5	0.8	0.2	0.5	0.8
Model with $H_{UI} : \rho_j = 0, j = 1, \dots, 4$, and cohort effects before and after 1979	n.r.	n.r.	n.r.	n.r.	n.r.	n.r.	-	-	-
Model with $H_{UI} : \rho_j = 0, j = 1, \dots, 4$, and no cohort effects $\gamma_{a2} = \gamma_{a3} = \gamma_{b2} = \gamma_{b3} = 0$	n.r.	n.r.*	n.r.*	r.	r.	r.	-	-	-

Notes: Based on specification 12 [Model 1] in the main text. r. indicates that the specification is rejected. n.r. indicates that the specification is not rejected. n.r. marked models with an asterisk * are only not rejected at an $\alpha=0.01$ level, the others also for $\alpha=0.05$. We do not perform the tests for high-education workers in Germany because of the high degree of censoring in this group.