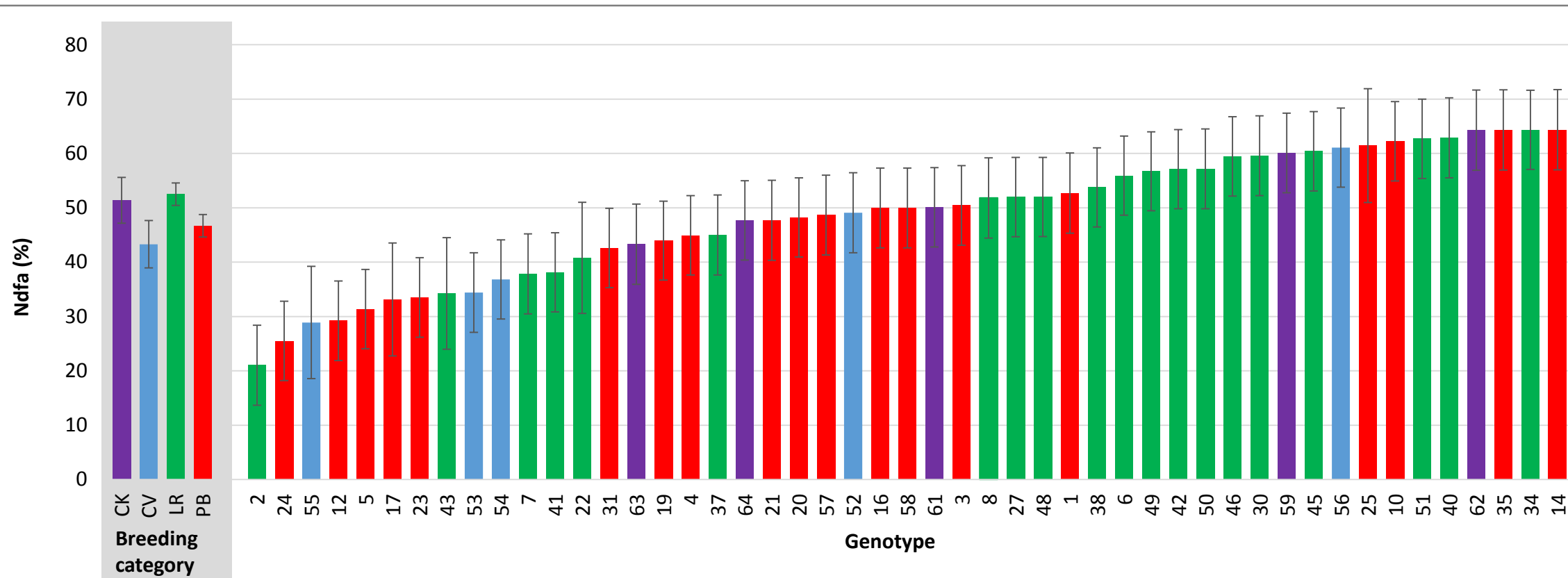
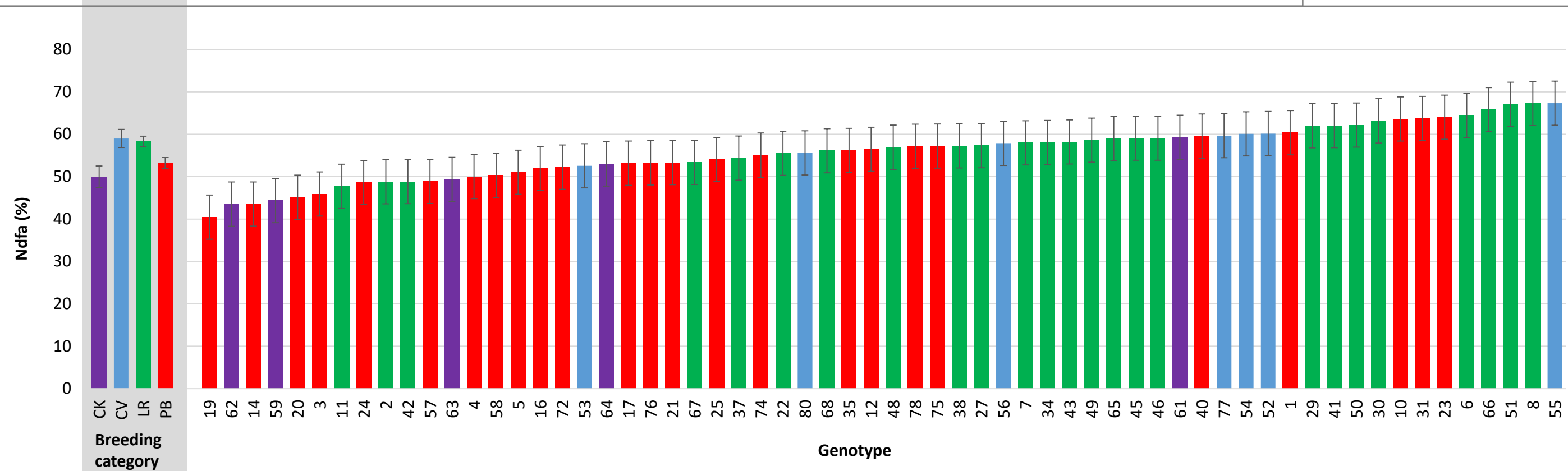


A



B



C

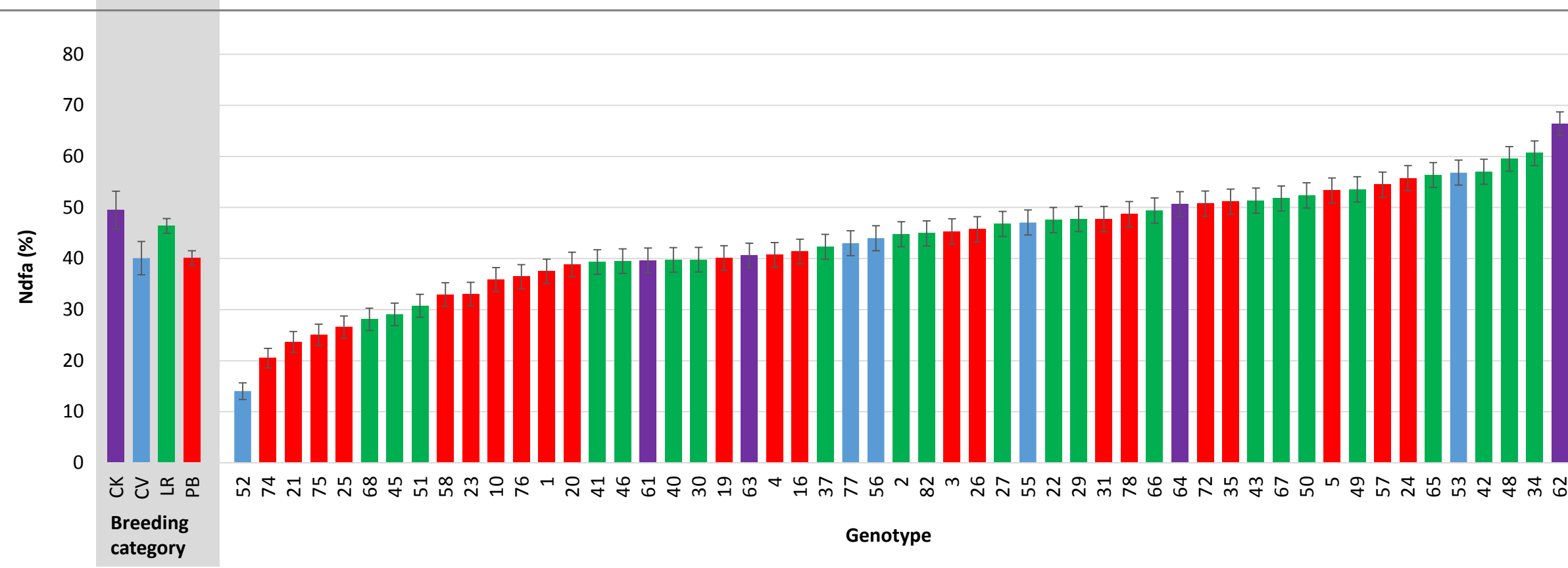
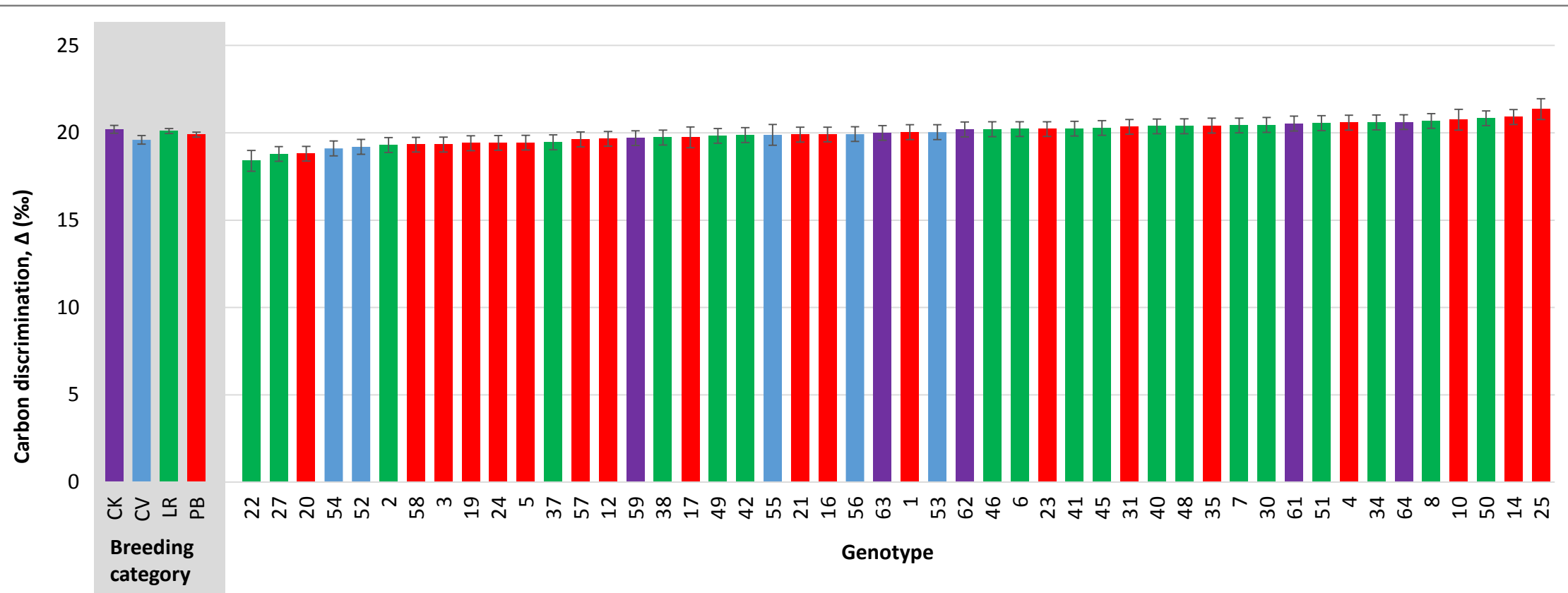
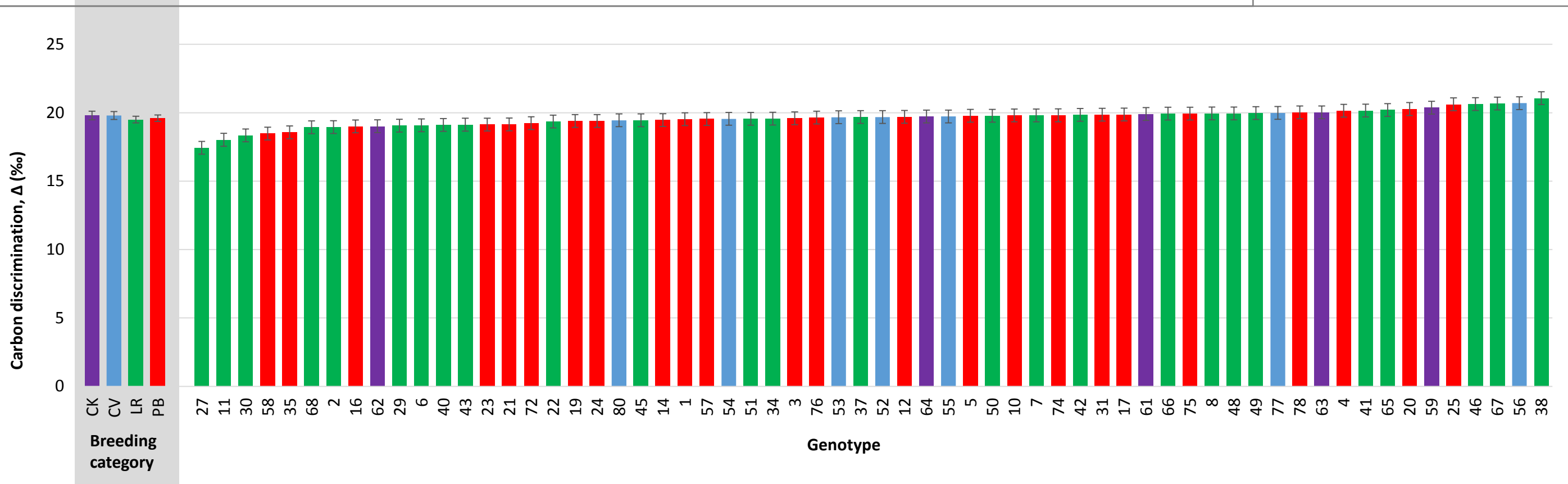


Figure S1. Histograms of Nitrogen derived from the atmosphere (%) values of genotypes comprising the HON panel tested at three field locations from 2014-2015. **A.** Elora 2014, **B.** Elora 2015 and **C.** Yorito. Breeding history category averages with standard errors are presented, followed by individual genotype LSmeans with standard errors. North American check genotypes (CK; purple), Honduran conventional genotypes (CV; blue), landraces (LR; green), and PPB varieties (PB; red). Genotype numbers correspond to those listed in Tables 6-8.

A



B



C

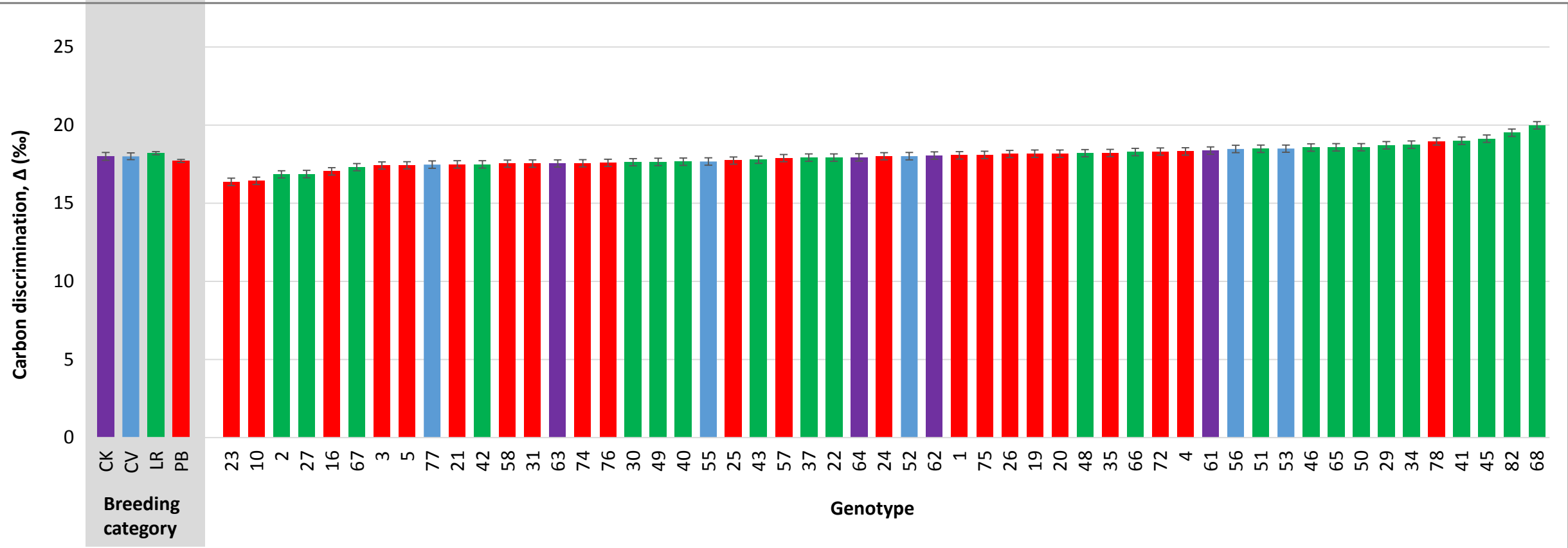
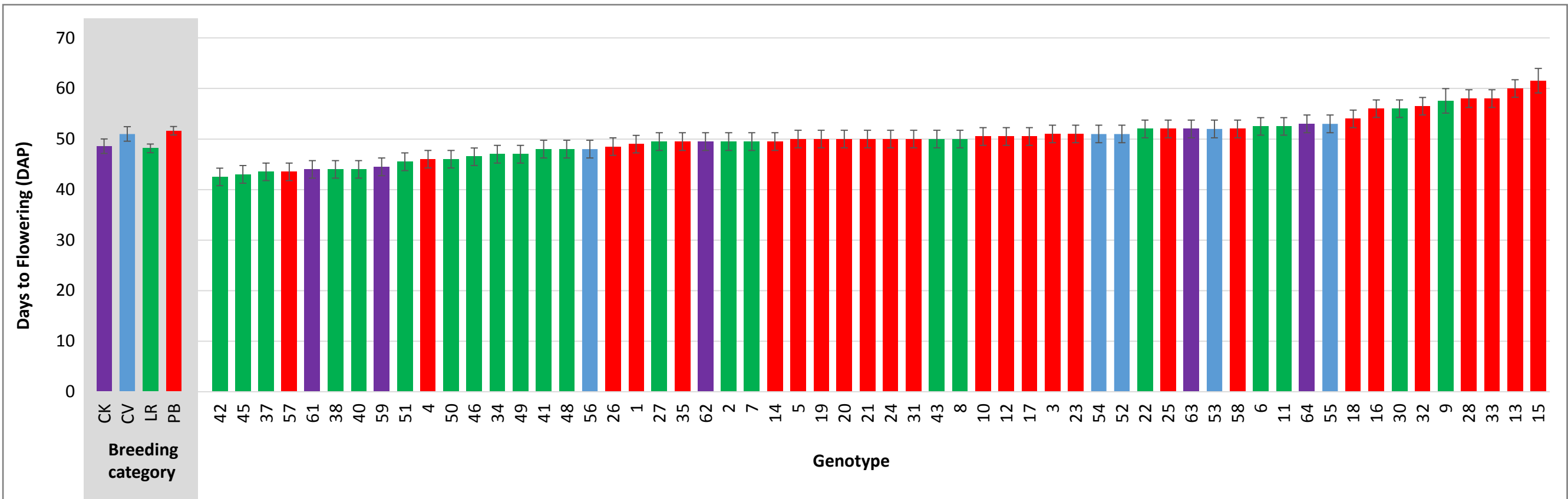


Figure S2. Histograms of carbon discrimination (Δ) values of genotypes comprising the HON panel tested at three field locations from 2014-2015. **A.** Elora 2014, **B.** Elora 2015 and **C.** Yorito. Breeding history category averages with standard errors are presented, followed by individual genotype LSmeans with standard errors. North American check genotypes (CK; purple), Honduran conventional genotypes (CV; blue), landraces (LR; green), and PPB varieties (PB; red). Genotype numbers correspond to those listed in Tables 6-8.

A



B

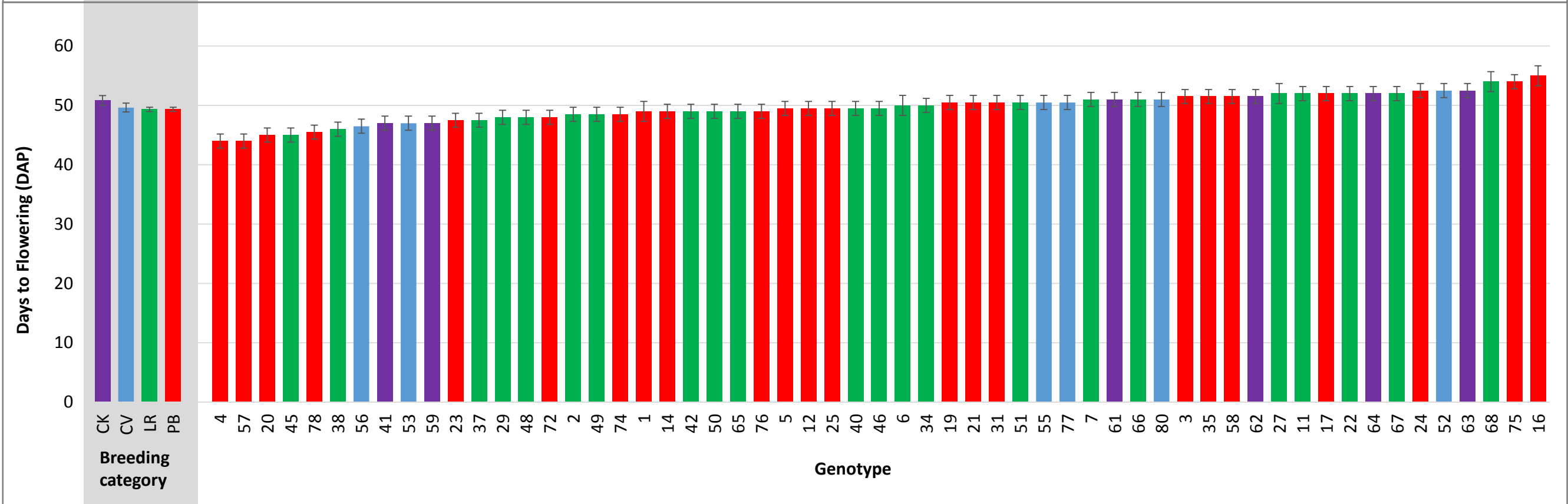


Figure S3. Histograms of days to flowering of genotypes comprising the HON panel tested at two field locations from 2014-2015. **A.** Elora 2014, **B.** Elora 2015. Breeding history category averages with standard errors are presented, followed by individual genotype LSmeans with standard errors. North American check genotypes (CK; purple), Honduran conventional genotypes (CV; blue), landraces (LR; green), and PPB varieties (PB; red). Genotype numbers correspond to those listed in Tables 6-8.

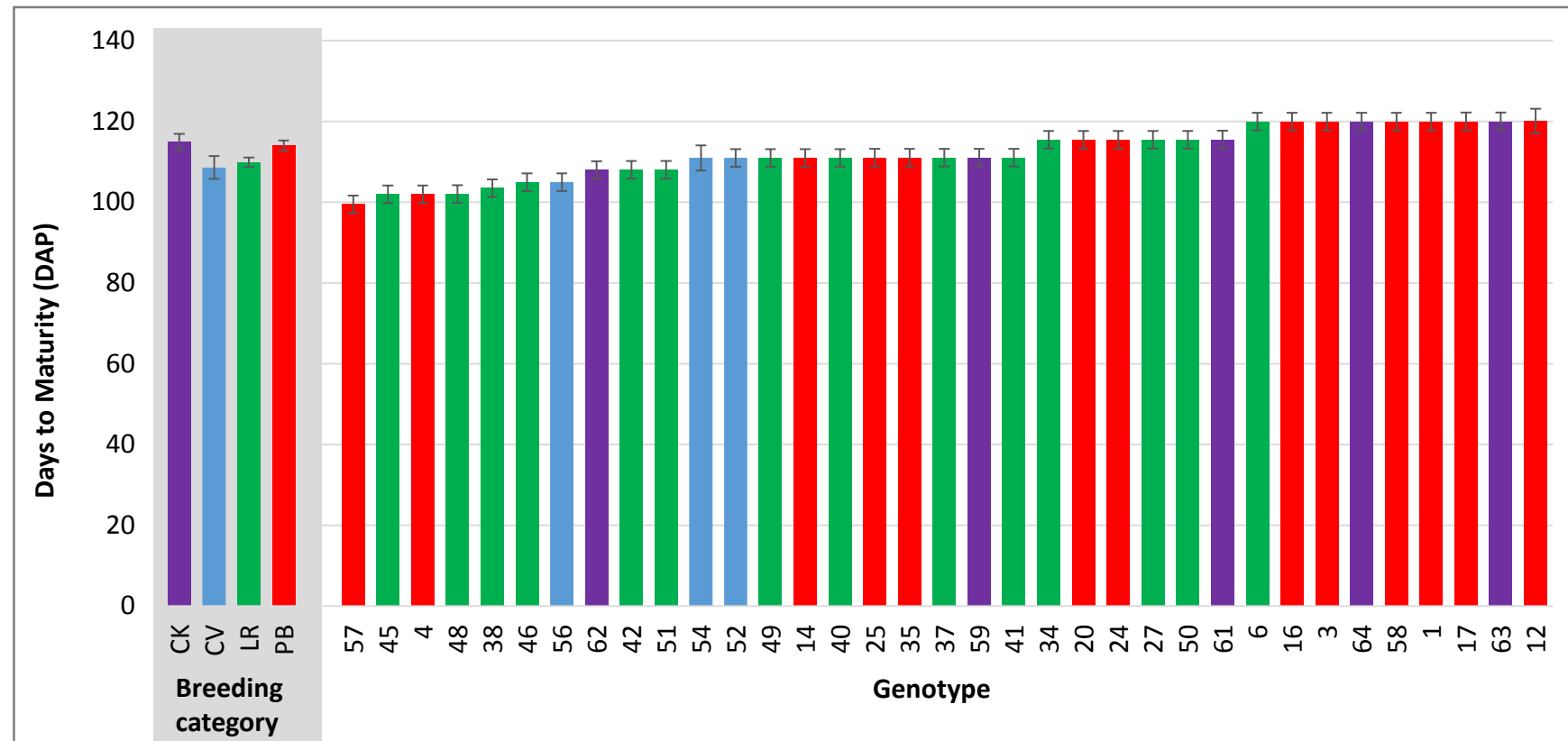
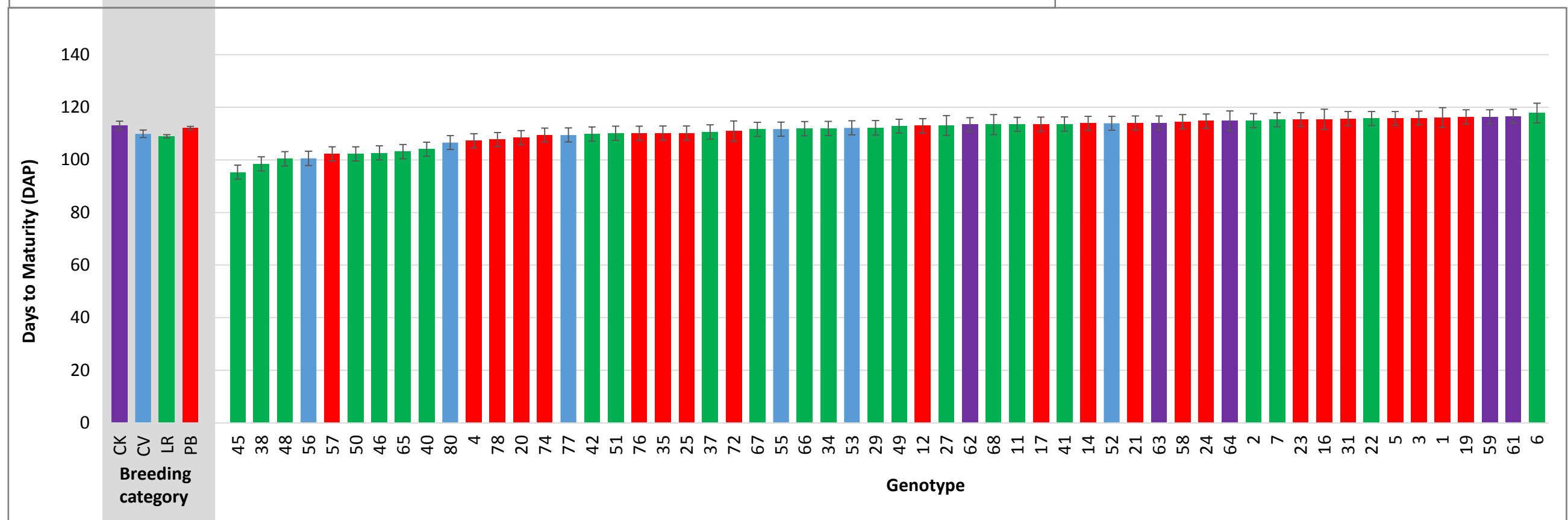
A**B**

Figure S4. Histograms of days to maturity of genotypes comprising the HON panel tested at two field locations from 2014-2015. **A.** Elora 2014, **B.** Elora 2015. Breeding history category averages with standard errors are presented, followed by individual genotype LSmeans with standard errors. North American check genotypes (CK; purple), Honduran conventional genotypes (CV; blue), landraces (LR; green), and PPB varieties (PB; red). Genotype numbers correspond to those listed in Tables 6-8.

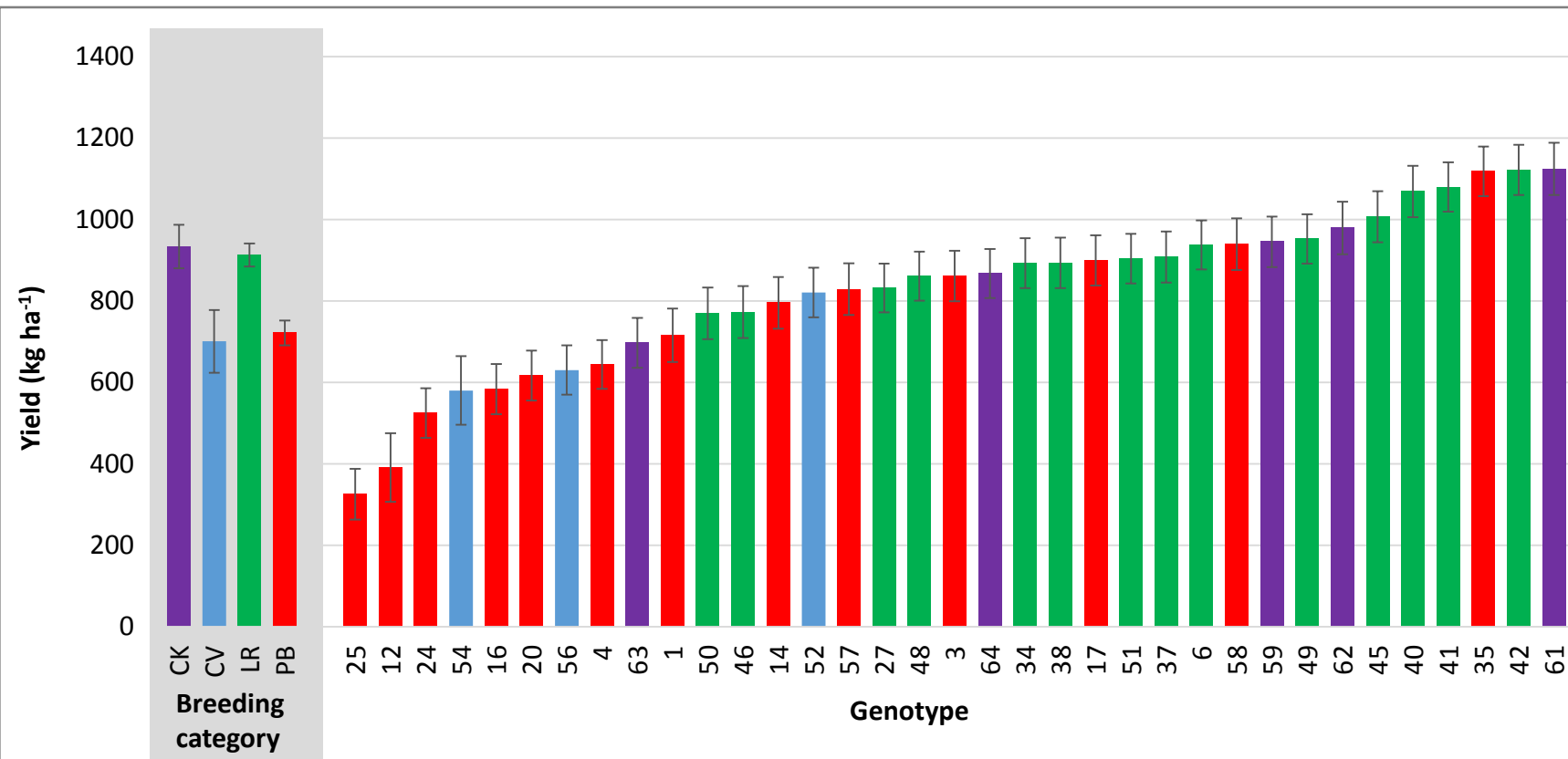
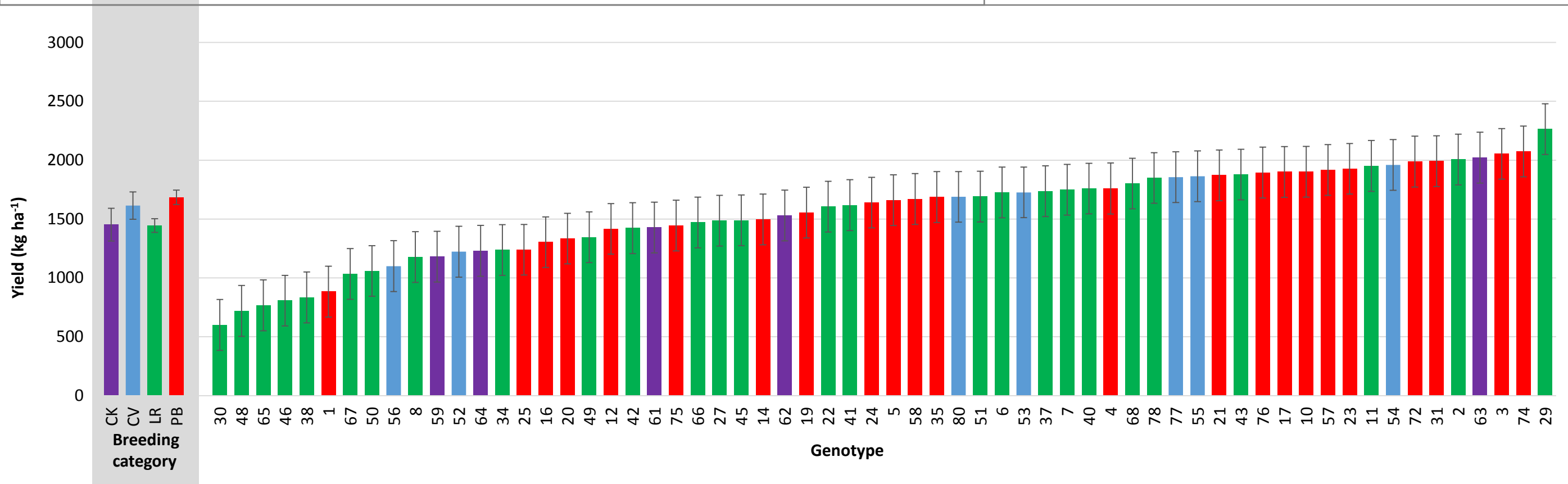
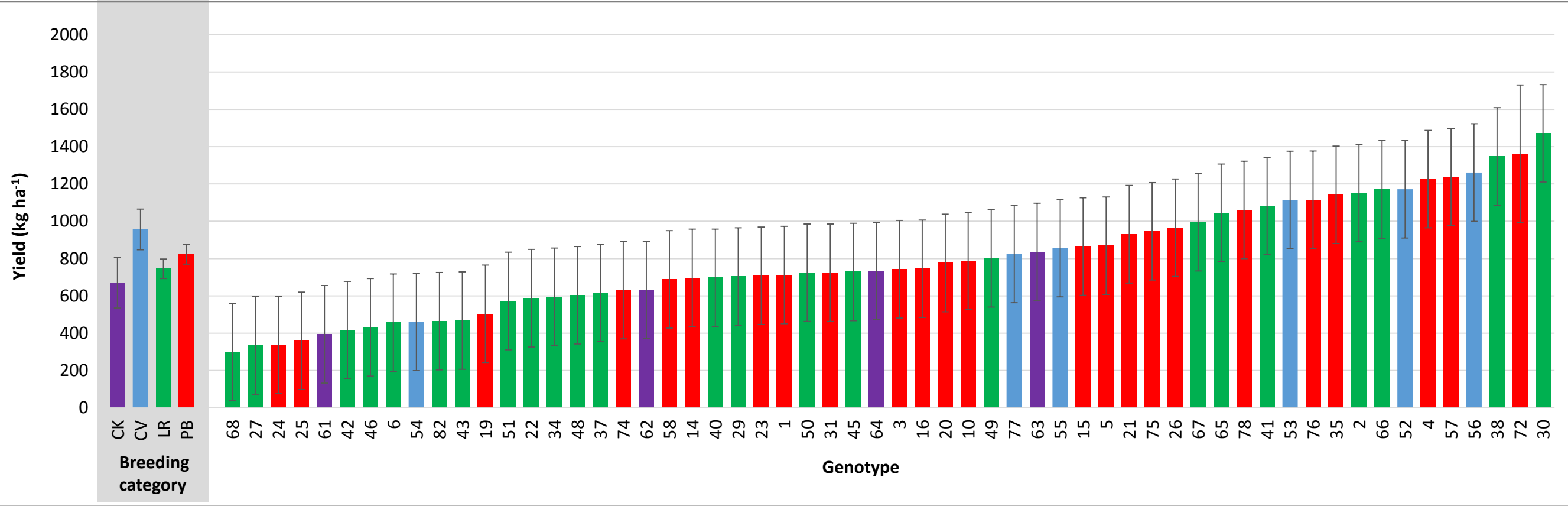
A**B****C**

Figure S5. Histograms of yield (kg ha⁻¹) values of genotypes comprising the HON panel tested at three field locations from 2014-2015. **A.** Elora 2014, **B.** Elora 2015 and **C.** Yorito. Breeding history category averages with standard errors are presented, followed by individual genotype LSmeans with standard errors. North American check genotypes (CK; purple), Honduran conventional genotypes (CV; blue), landraces (LR; green), and PPB varieties (PB; red). Genotype numbers correspond to those listed in Tables 6-8.