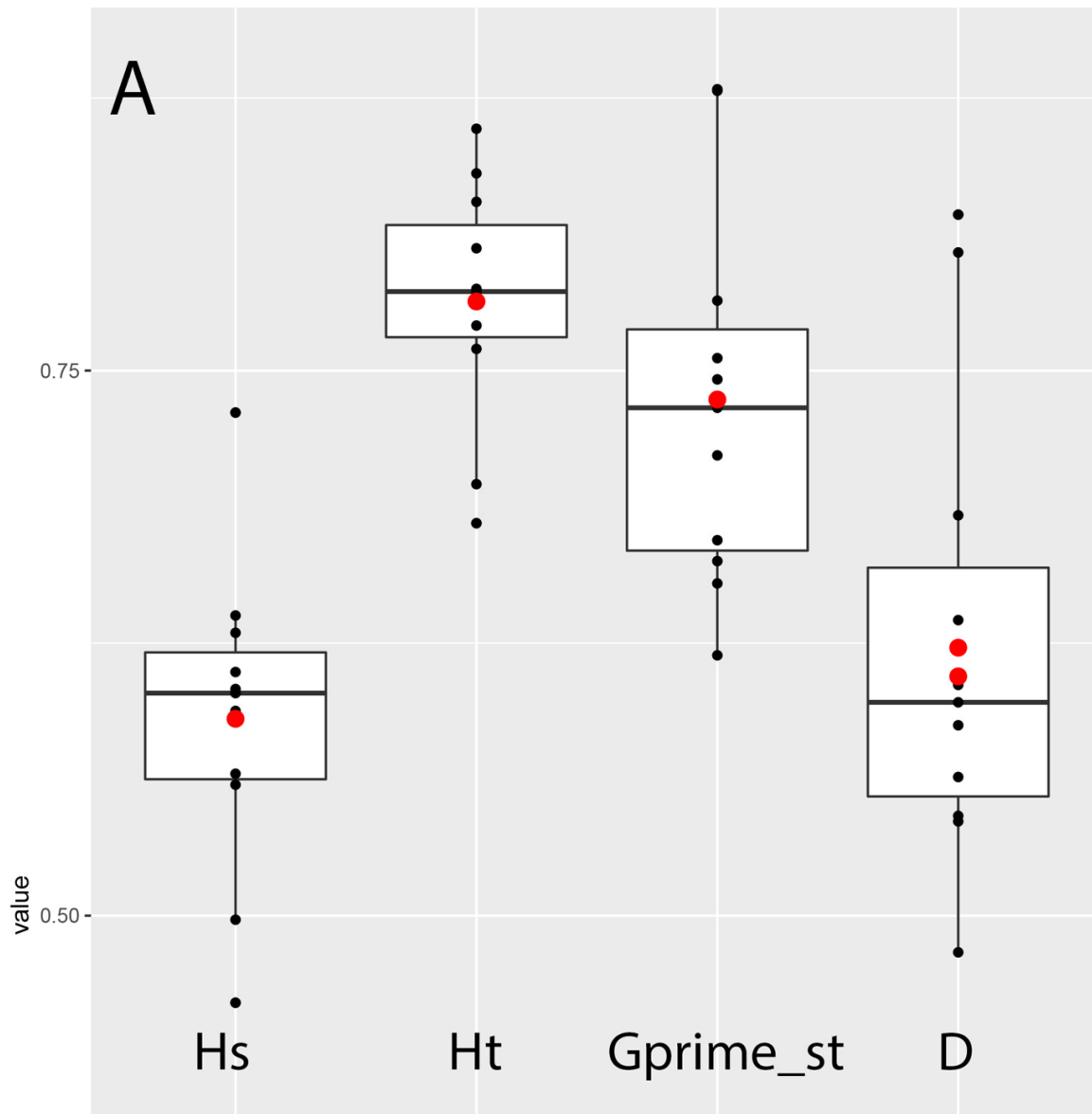
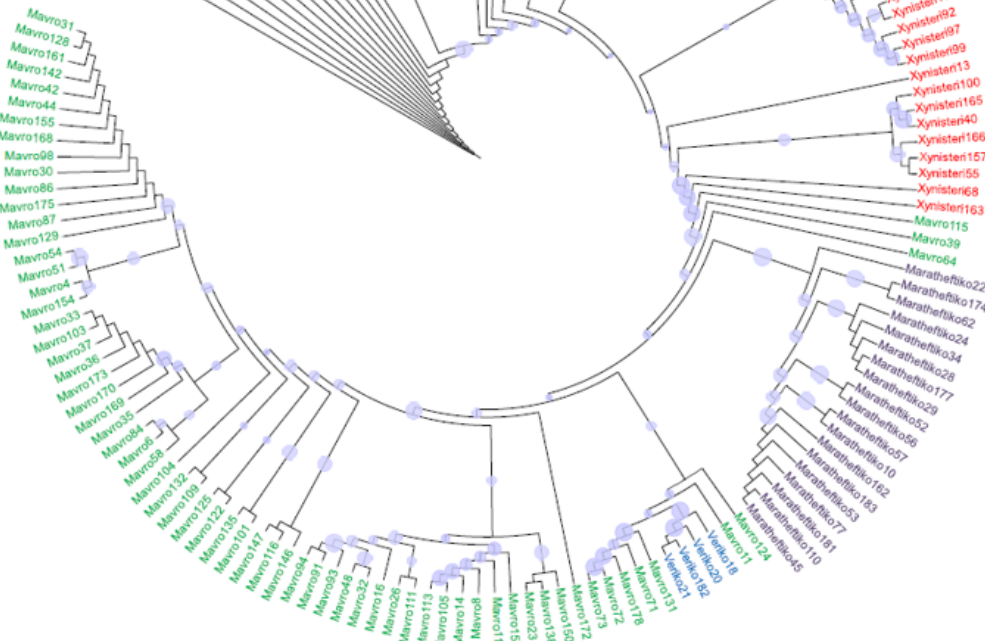


**Figure S1.** Genotype accumulation curve depicting the efficiency of SSRs in delineating the Cypriot *Vitis* spp. Genotypes.

## Estimates of population differentiation



**Figure S2.** Genetic variability estimates from clone corrected genotypes. Boxplots depict the distribution of genetic indexes across the 11 loci studied. Hs: Heterozygosity with population structure, Ht: Heterozygosity without population structure, Gprime\_st: Hedrick index, D: Jost index (all indexes were calculated using the Poppr package).



**Figure S3.** Phylogenetic tree of Cypriot grapevine genotypes. The size of nodes correlates to bootstrap support values.