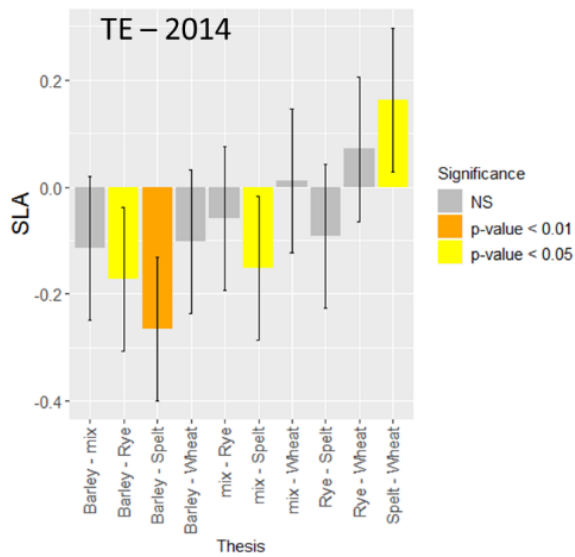
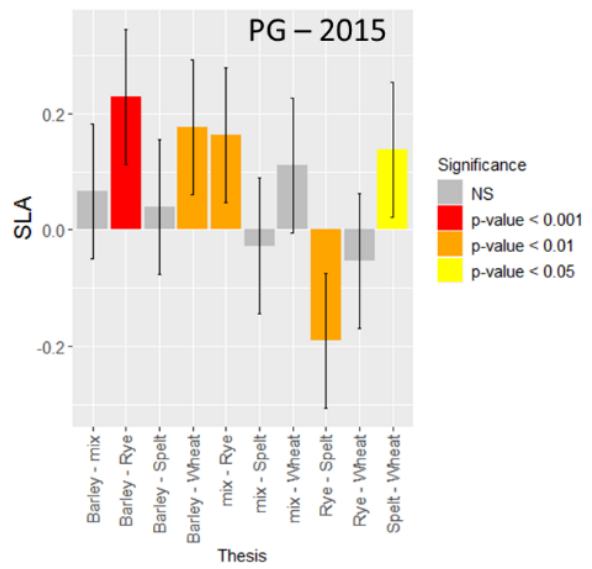


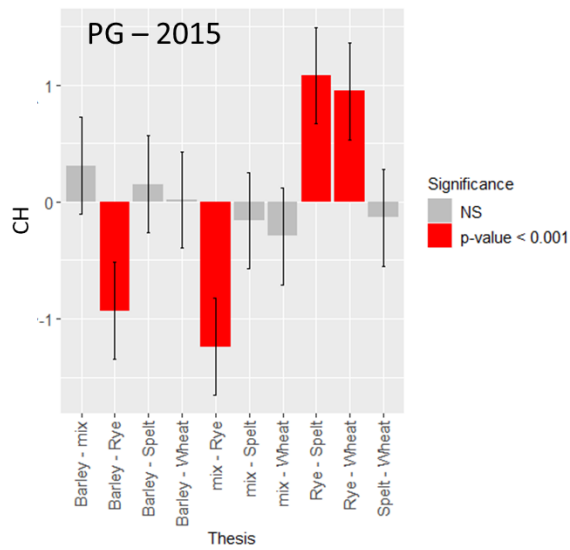
Figure S1. Spider graph comparing traits, Ellenberg indicators, weed richness, total density and total cover of the weed communities in ASC presence (ASC yes) and in fallow plots (ASC no) over the two years at TE stage (a), PG stage (b), EH stage (c). CRP, creeping vs not creeping species; PRN, perennial life form vs annual; SBL, long-term seed bank longevity vs short-term; SWT, seed weight; CH canopy height; SLA, specific leaf area; BFF, beginning of flowering; DFF, duration of flowering (flowering span); L, light affinity; T, temperature; N, soil nutrient condition (N, T and L, Ellenberg and Pignatti values); R, species richness; TD, total density; TC, total cover.



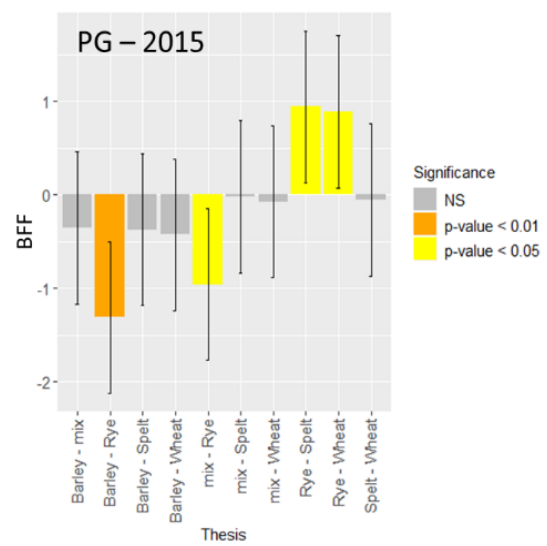
(a)



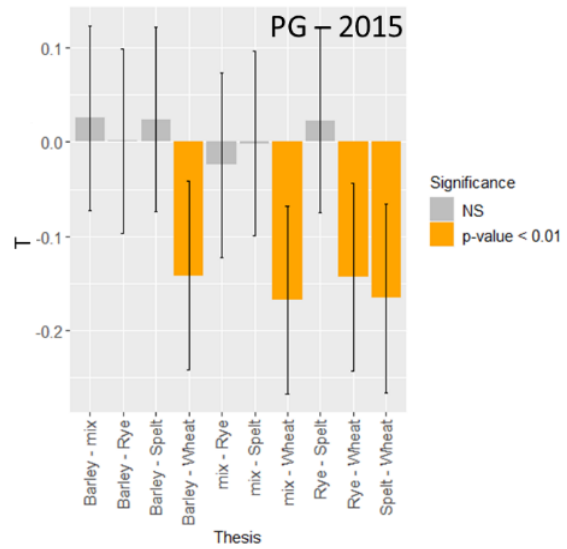
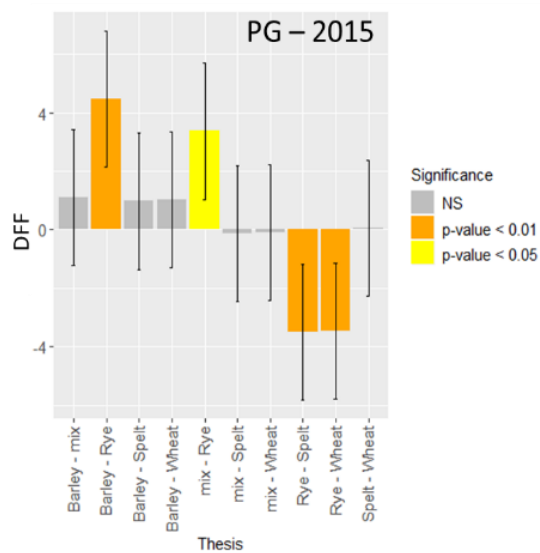
(b)



(c)



(d)



(e)

(f)

Figure S2. Effect of ASC species on SLA (a-b), CH (c), BFF (d), DFF (e) weed traits and T Ellenberg ecological indicator (f) at TE-2014 (a) and PG-2015 stages (b-f). CH, canopy height; SLA, specific leaf area; BFF, beginning of flowering; DFF, duration of flowering (flowering span); T, Ellenberg indicator for temperature.

NS – not significant difference



© 2020 by the authors. Submitted for possible open access publication under the terms and conditions of the Creative Commons Attribution (CC BY) license (<http://creativecommons.org/licenses/by/4.0/>).