

Supplementary Materials

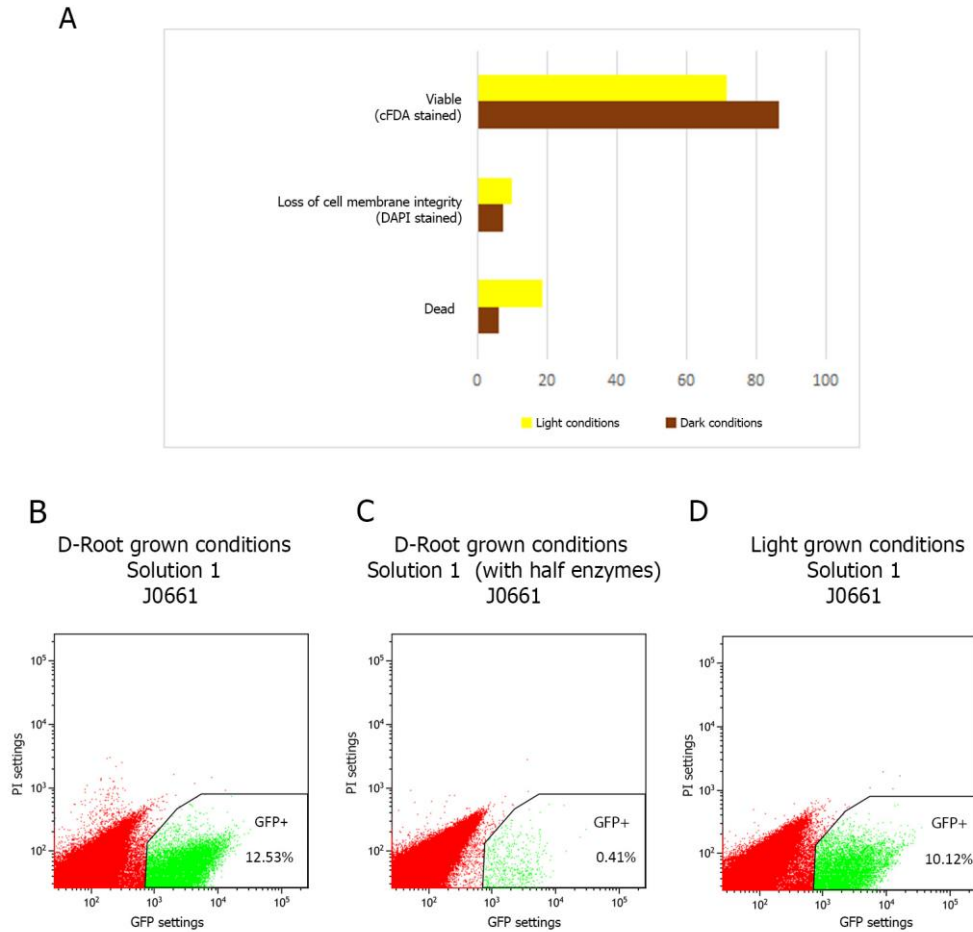


Figure S1. Viability assessment and FACS experiments in dark and light conditions, as well as different enzyme concentrations (A) Graphic representation of the percentage of protoplast viability cFDA (live protoplasts), DAPI (show the loss of membrane integrity) staining and dead cells corresponding to no-stained root cells from seedlings grown with the D-Root device (dark) or without the D-Root (light). Propidium iodide settings/GFP settings plots of *J0661* under different conditions: (B) Dark conditions, (C) Dark conditions with half enzymes and (D) Light conditions.

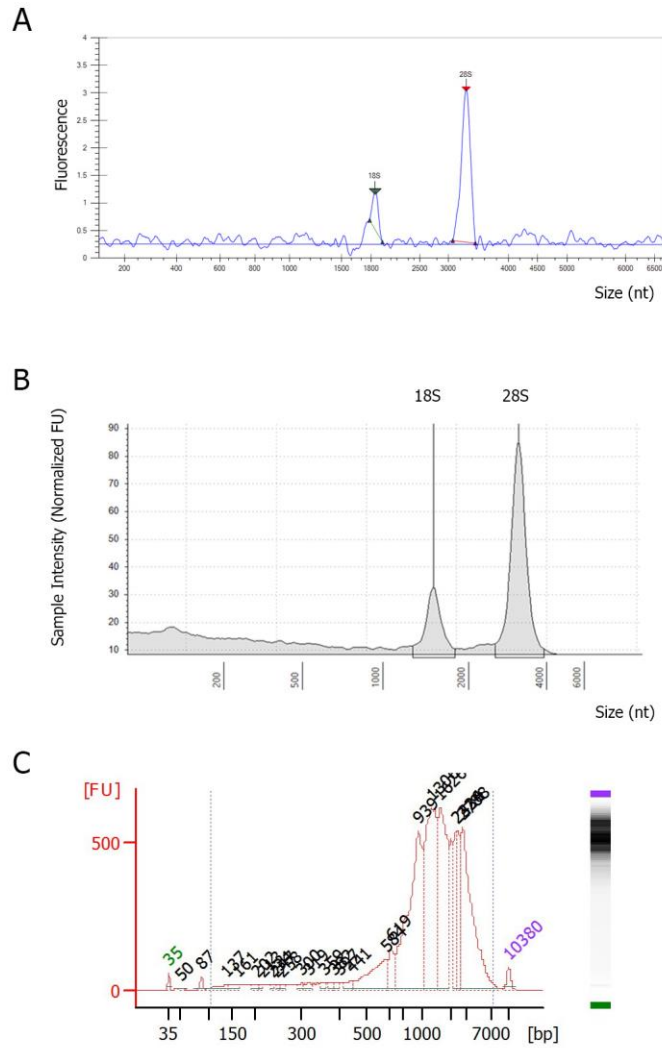


Figure S2. Analysis of RNA and cDNA from mCherry sorted positive protoplasts. (A) Electropherogram of RNA profile from 380 mCherry positive protoplasts using LabChip (RNA Quality Score 9) and (B) TapeStation technology (RIN: 9). (C) Bio-analyzer profile of cDNA showing an average size of 1700 bp. Inset: digital electrophoresis.