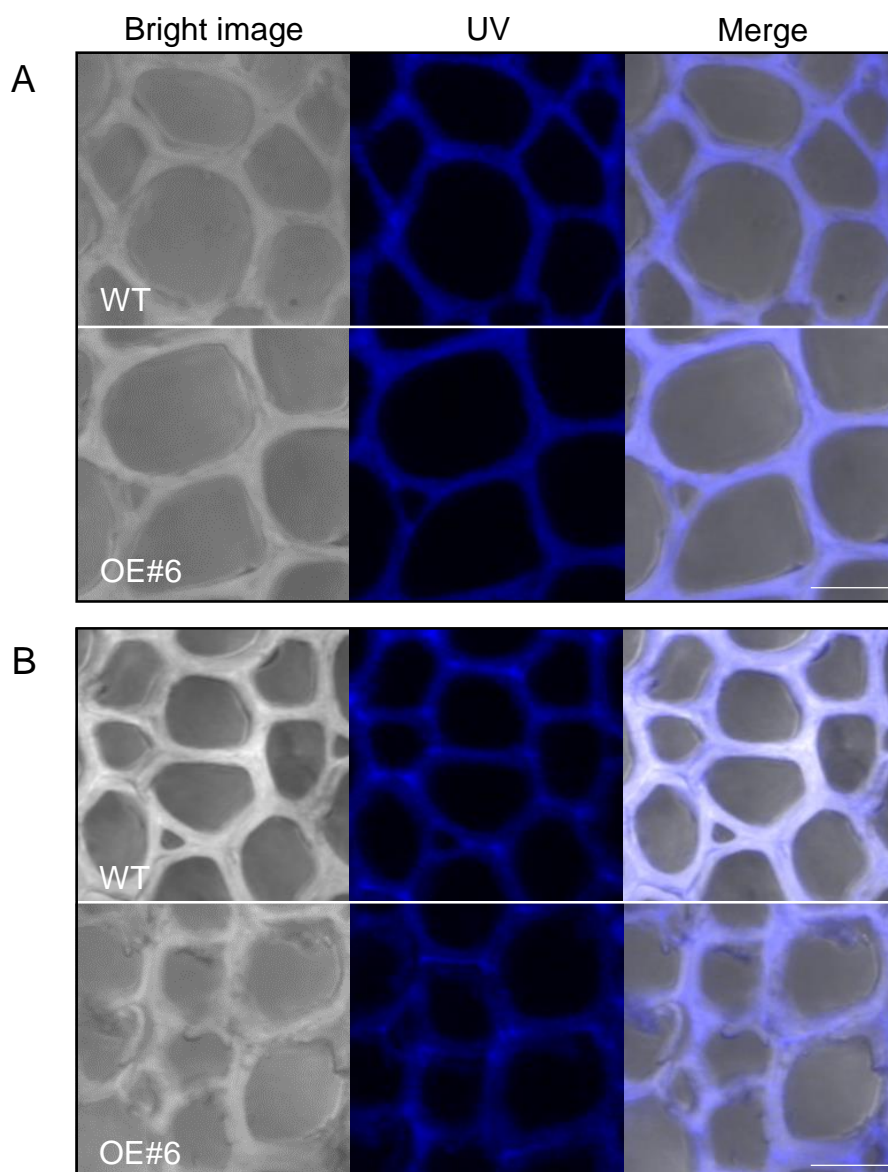


**Figure S1. Poplar transformation and the procedure of whole plant regeneration.** (a) Callus formation from stem segments. (b) Shoot induction from callus. (c) Whole plant regeneration from selected transgenic shoot. (d) Recorded rates of callus, shoot induction, and whole plant regeneration. Transgenic plants were obtained with a rate of 10%. Bars = 1 cm.



**Figure S2. UV autofluorescence of xylem cells of WT and *AtPLAIII*αOE.** (A) Outer and (B) inner xylem layer structure image. Bars = 10 μm.