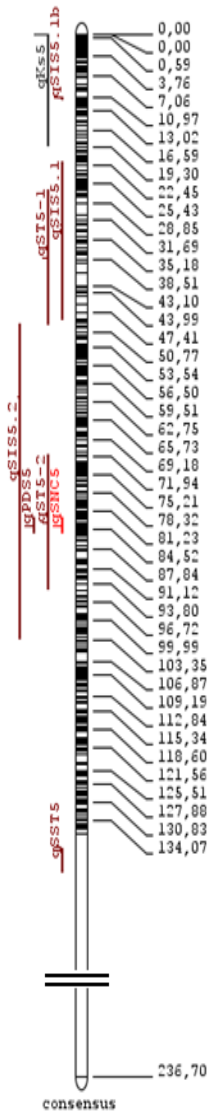
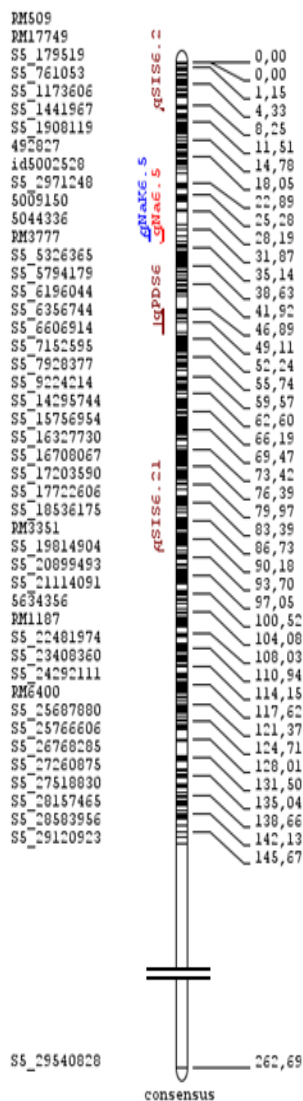


Figure 1: Schematic representation of the four chromosomes of the genome of the bacterium. The figure shows four chromosomes (1, 2, 3, 4) as horizontal bars with varying lengths and internal structures. Chromosome 1 is the largest, followed by 2, 3, and 4. Each chromosome is labeled with its size in kb at the top and bottom. The top labels are in black, and the bottom labels are in red. The chromosomes are color-coded: Chromosome 1 is blue, Chromosome 2 is green, Chromosome 3 is orange, and Chromosome 4 is yellow. The chromosomes are arranged in a circular fashion, with Chromosome 1 at the top, 2 on the left, 3 on the right, and 4 at the bottom. The chromosomes are connected by lines, indicating their relative positions and sizes. The figure also includes a scale bar at the bottom, ranging from 0 to 365,000 kb.

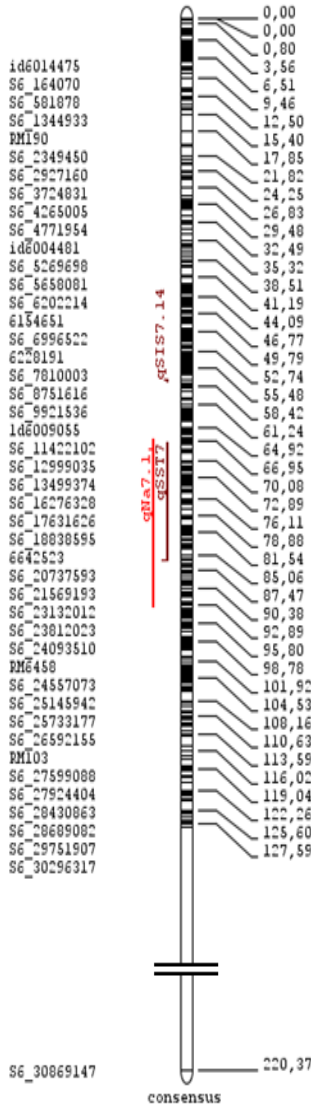
consensus



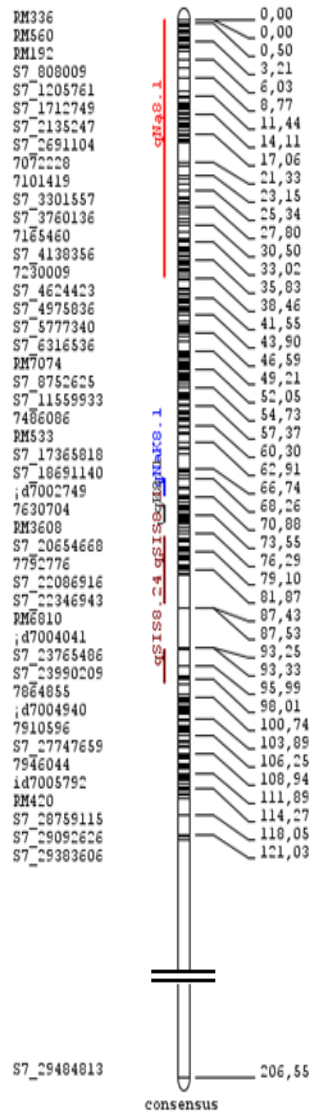
5



6

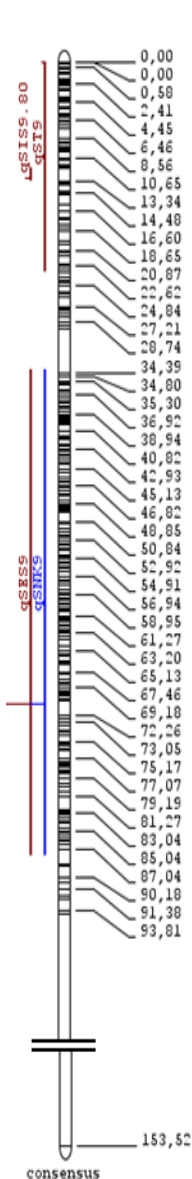


7

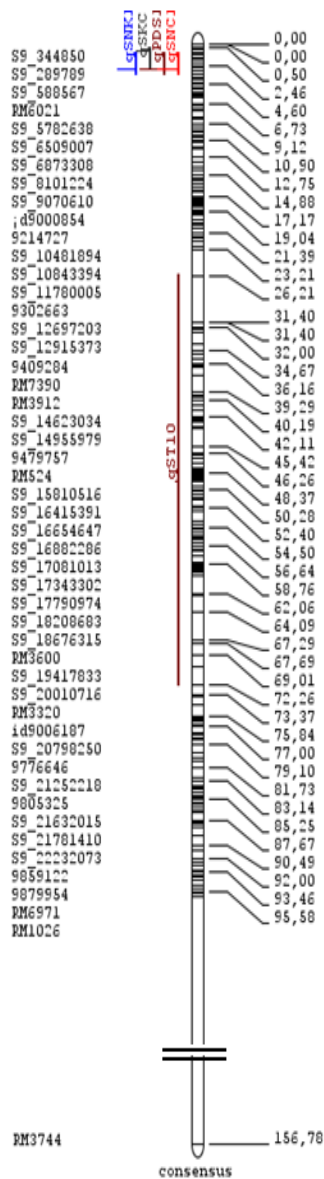


8

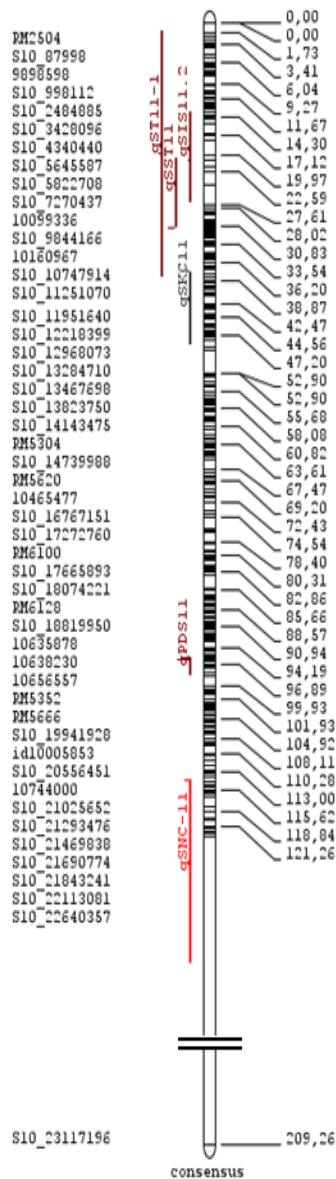
PM5911
PM2344
PM2680
0004315
0024868
0046012
S8_1090318
S8_1541432
S8_2160050
0149888
S8_2949645
S8_3283455
S8_3501665
id8002314
PM3572
0316836
S8_5140943
S8_5418220
S8_7668333
0434772
PM6429
S8_16048483
PM331
S8_19191663
S8_20060711
S8_20830908
0645127
S8_21318453
S8_21613952
S8_22285784
PM223
PM5637
S8_23614171
08139985
PM556
S8_24738259
PM8043
0928819
0938168
id8006885
S8_25717532
S8_26269644
S8_26796602
S8_27613462
S8_28201866
PM8045
PM3120
PM5545



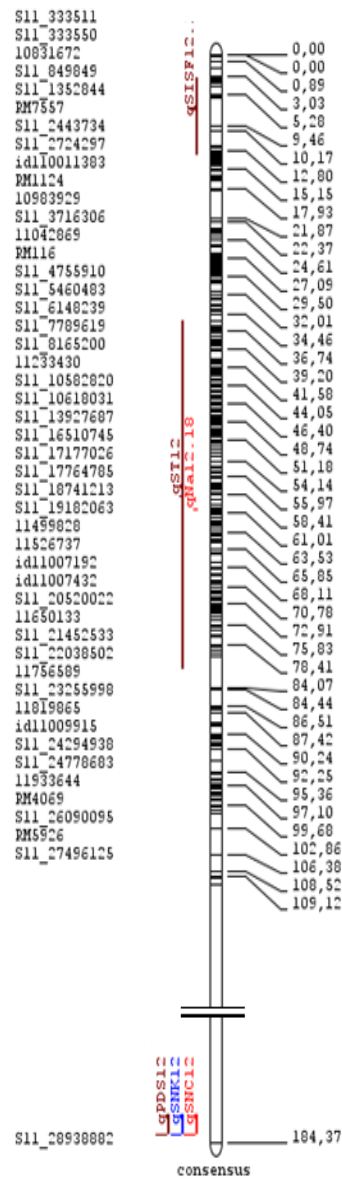
9



10



11



12